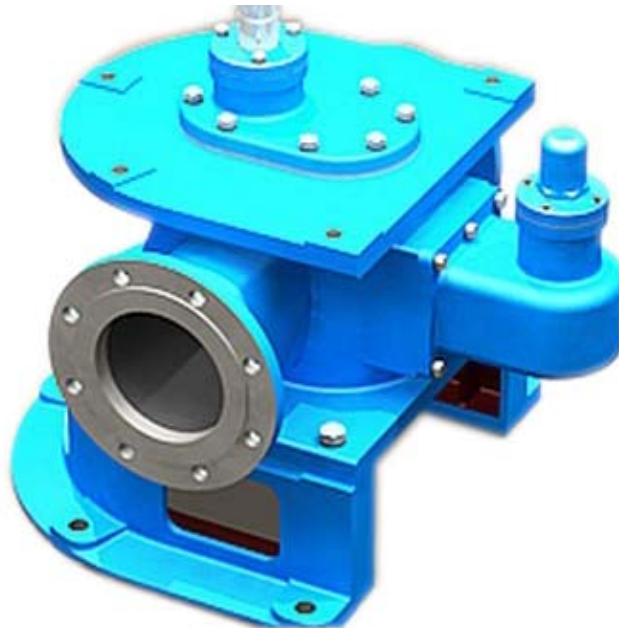


LYB SERIES CIRCULAR GEAR PUMP



Main Specification

LYB Series Circular Gear Pump are mainly consist of gear, shaft, pump body, pump cover, shaft end seal, bearing, etc. The circular arc gear pump has a stable performance, low noise, long life, high efficiency.

Axle Seal: This series of pump adopt mechanical sealing. It also adopts then filling seal according to the requirement of customer.

Type	Diameter Inlet/Outlet	Capacity(m3/h)				Pressure Mpa
		60HZ		50HZ		
		1180rpm	900rpm	970rpm	720rpm	
LYB0.6	25x25	0.72	-	0.6	-	0.6
LYB1.6	32x32	1.92	-	1.6	-	
LYB10	65x65	12	-	10	-	
LYB20	100x80	24	-	20	-	
LYB25		30	-	25	-	
LYB30	125x100	36	-	30	-	
LYB40	150x125	48	-	40	-	
LYB50		61	-	50	-	
LYB65		-	65	-	55	
LYB80	150x125	-	80	-	65	
LYB90		-	90	-	75	
LYB100	200x150	-	100	-	85	