

Jinbo Marine

Marine & Offshore Equipment Datasheet

PRODUCT DATASHEET

MARINE HYDRAULIC STEERING GEAR

400-1000kN·m Linked Ram Type Electro-hydraulic Steering Gear

400-1000kN·m Linked Ram Type Electro-hydraulic Steering Gear General description The linked cylinder type electro-hydraulic steering gear (four cylinder) consists of one rudder mechanism with four piston...

ISO9001 Supplier

Class Certificate

Export Supply



Key Highlights

Category	Marine Hydraulic Steering gear
Standard	DIN
Material	Cast steel
Weight / Size	Drawing and dimension Specification No Torque(kn.m) Truning time(s) ...
Certificate	DNV,ABS,RINA,CCS,

We can supply according to your requirement, drawings, class certificate needs, and delivery schedule.

Technical Specifications			
Category	Marine Hydraulic Steering gear	Model / SKU	400-1000kN-m-Linked-Ram-Type-Electro-hydraulic-Steering-Gear
Standard	DIN	Material	Cast steel
Weight / Size	Drawing and dimension Specification No Torque(kn.m) Truning time(s) Motor power(W) Tiler radius(mm) Rudder stock diam(mm) A B 1 400-550 28 37 650 420 4000 1530 2 600-650 28 45 650 420 4000 1530 3 700-900 28 55 700 460 5296 1900 4 850- 1000 28 75 720 480 5480 2000 5 1100-1250 28 75 800 550 5000 2500 6 1300-1600 28 110 900 650 5000 2500 7 1800 28 110 1020 700 5500 2800 8 2000 28 132 1020 750 5500 2800	Certificate	DNV,ABS,RINA,CCS,
Warranty	12 Months unless specified otherwise	Origin	China

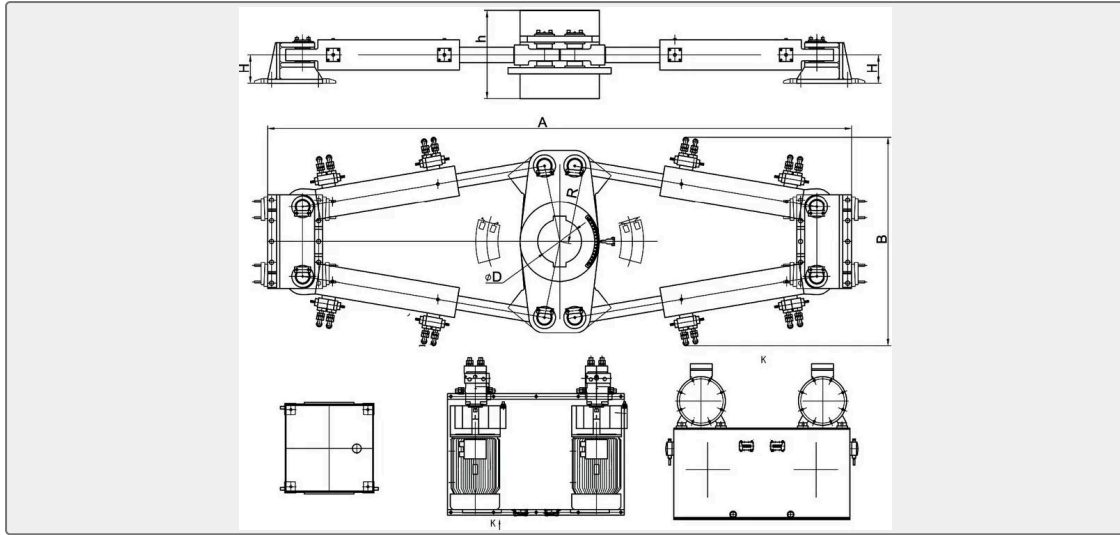
CONTENTS	■ 400-1000kN·m Linked Ram Type Electro-hydraulic Steering Gear	■ General description
	■ Drawing and dimension	■ Specification

400-1000kN·m Linked Ram Type Electro-hydraulic Steering Gear

General description

The linked cylinder type electro-hydraulic steering gear (four cylinder) consists of one rudder mechanism with four piston type of cylinder, two sets of motor kinetic tanker of oil pump, one reserve oil tank. Control modes, including electronic and pump control, can be used together with any form of autopilot and followup pilot. Four cylinders can be used together or in couples. One of which fails to work, can be separated to ensure normal work of steering control. It is widely used for ships with high safety performance such as large ship, oil tanker, liquefied-gas carrier, chemical tanker and etc.

Drawing and dimension



Specification

No	Torque(kn.m)	Truning time(s)	Motor power(W)	Tiler radius(mm)	Rudder stock diam(mm)	A	B
1	400-550	28	37	650	420	4000	1530
2	600-650	28	45	650	420	4000	1530
3	700-900	28	55	700	460	5296	1900
4	850-1000	28	75	720	480	5480	2000
5	1100-1250	28	75	800	550	5000	2500
6	1300-1600	28	110	900	650	5000	2500
7	1800	28	110	1020	700	5500	2800
8	2000	28	132	1020	750	5500	2800