

SHACKLE

Anchor (Bow) Shackle (With Hexagonal Sink Pin) SS304 ORSS316

ISO9001 Supplier

Class Certificate

Export Supply

SIZE Φ mm A mm B mm SWL kgs BL kgs M4 4 8 18 138 ...



Key Highlights

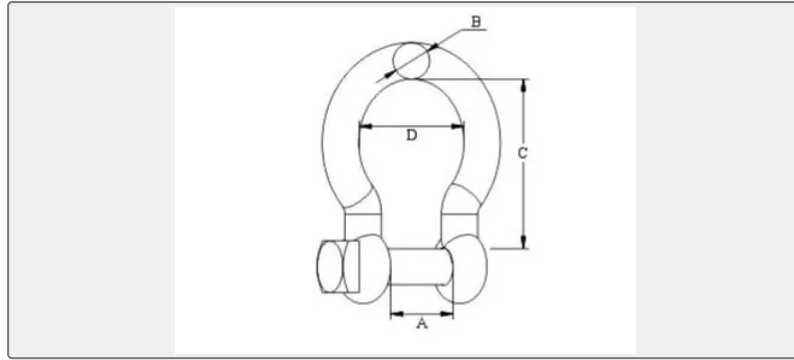
Category	Shackle
Material	Stainless steel
Weight / Size	SIZE Φ mm A mm B mm SWL kgs BL kgs M4 4 8 18 138 550 M5 5 10 23 300 1200...
Certificate	ABS, LR, BV, DNVGL, NK, KR, IRS, RMRS, CCS

We can supply according to your requirement, drawings, class certificate needs, and delivery schedule.

Technical Specifications

Category	Shackle	Model / SKU	ANCHOR-BOW-SHACKLE-WITH-HEXAGONAL-SINK-PIN-SS304-ORSS316
Material	Stainless steel	Weight / Size	SIZE Φ mm A mm B mm SWL kgs BL kgs M4 4 8 18 138 550 M5 5 10 23 300 1200 M6 6 12 27 425 1700 M8 8 16 37 625 2500 M10 10 20 46 1075 4300 M12 12 24 55 1550 6200 M13 13 26 60 1585 6340 M14 14 28 63 1625 6500 M16 16 32 74 1750 7000 M19 19 38 87.5 3500 14000 M22 22 44 99 4250 17000 M25 25 50 112.5 5000 20000 M28 28 56 126 5000 20000
Certificate	ABS, LR, BV, DNVGL, NK, KR, IRS, RMRS, CCS	Warranty	12 Months unless specified otherwise
Origin	China		

China Anchor (Bow) Shackle (With Hexagonal Sink Pin) SS304 ORSS316:



SIZE	Φ mm	A mm	B mm	SWL kgs	BL kgs
M4	4	8	18	138	550
M5	5	10	23	300	1200
M6	6	12	27	425	1700
M8	8	16	37	625	2500
M10	10	20	46	1075	4300
M12	12	24	55	1550	6200
M13	13	26	60	1585	6340
M14	14	28	63	1625	6500
M16	16	32	74	1750	7000
M19	19	38	87.5	3500	14000
M22	22	44	99	4250	17000
M25	25	50	112.5	5000	20000
M28	28	56	126	5000	20000