

# Jinbo Marine

Marine &amp; Offshore Equipment Datasheet

PRODUCT DATASHEET

## OTHER MARINE VALVES & ACCESSORIES

# Air Water Separator CB/T3572-94

Air Water Separator CB/T3572-94 is used to separate the air and water in the marine compressed air pipe system. Specification : Standard: CB/T3572-94, CBM1034-81 (Flange size as per JIS) T...

ISO9001 Supplier

Class Certificate

Export Supply



### Key Highlights

<b>Category</b>	Other Marine Valves & Accessories
<b>Standard</b>	JIS
<b>Material</b>	Steel
<b>Weight / Size</b>	CB/T3572-94, CBM1034-81 (Flange size as per JIS) Type Working Pressure N...
<b>Certificate</b>	ABS, LR, BV, DNVGL, NK, KR, IRS, RMRS, CCS

We can supply according to your requirement, drawings, class certificate needs, and delivery schedule.

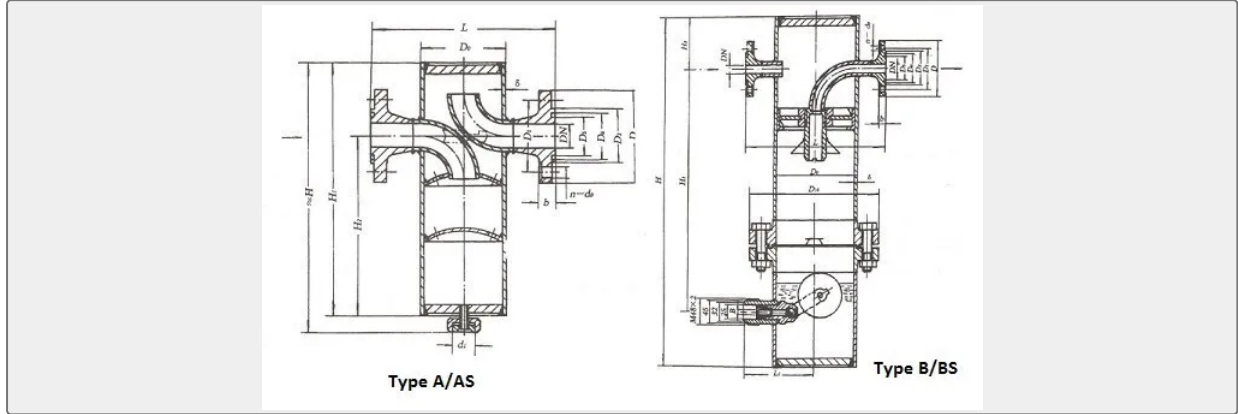
### Technical Specifications

<b>Category</b>	Other Marine Valves & Accessories	<b>Model / SKU</b>	Air-Water-Separator-CB-T3572-94
<b>Standard</b>	JIS	<b>Material</b>	Steel
<b>Weight / Size</b>	CB/T3572-94, CBM1034-81 (Flange size as per JIS) Type Working Pressure Nominal Diameter A,AS 3.0Mpa DN20~50 B,BS 3.0Mpa DN20~80 Type A--- Air water separator,Flange standard:	<b>Certificate</b>	ABS, LR, BV, DNVGL, NK, KR, IRS, RMRS, CCS
<b>Warranty</b>	12 Months unless specified otherwise	<b>Origin</b>	China

**CONTENTS**

- China Air Water Separator CB/T3572-94:
- Main Parts & Material:
- Main Size:
- Specification :
- Test Method:

## China Air Water Separator CB/T3572-94:



Air Water Separator CB/T3572-94 is used to separate the air and water in the marine compressed air pipe system.

### Specification :

Standard: CB/T3572-94, CBM1034-81 (Flange size as per JIS)

Type	Working Pressure	Nominal Diameter
A,AS	3.0Mpa	DN20~50
B,BS	3.0Mpa	DN20~80

Type A---Air water separator,Flange standard: GB569

Type AS--Air water separator,Flange standard: GB569

Type B---Automatic drainage air water separator,Flange standard: GB569

Type BS---Automatic drainage air water separator,Flange standard: GB2501

### Main Parts & Material:

Body, Elbow---Seamless Steel Pipe

Cover, Coupling, Flange, Flap---Carbon Steel

Float---Stainless Steel

### Test Method:

1. Strength Test: Hydraulic pressure 4.5Mpa and last 5 minutes, and no leakage.
2. Airtight Test: 3.0Mpa test pressure, put the air water separator into the water, or apply the soapy water on the welding points & joints, no leakage in 5 minutes.
3. Type B/BS can work normally when inclined 16°.

# Main Size:

Type A:

Nominal Diameter	Structure Size						Flange Size							Bolt		Connection Thread	Weight
	H	H1	H2	L	D0	δ	D	D1	D2	D5	D6	b	d0	Th	n		
20	370	333	253	218	89	5.5	105	73	58	35	51	16	13	M12	6	M27*1.5	7.28
25	370	333	253	218	89	5.5	115	83	66	42	58	18	15	M14	6	M27*1.5	7.6
32	370	333	253	218	89	5.5	125	93	74	50	66	20	15	M14	6	M27*1.5	8.01
40	520	478	338	324	168	7	145	107	84	60	76	22	17	M16	6	M36*2	25.94
50	520	478	338	324	168	7	155	117	96	72	88	23	17	M16	6	M36*2	27.4

Type AS:

Nominal Diameter	Structure Size						Flange Size							Bolt		Connection Thread	Weight
	H	H1	H2	L	D0	δ	D	D1	D2	D5	D6	b	d0	Th	n		
20	370	333	253	218	89	5.5	105	75	58	35	51	16	14	M12	4	M27*1.5	7.52
25	370	333	253	218	89	5.5	115	85	68	42	58	16	14	M12	4	M27*1.5	7.68
32	370	333	253	218	89	5.5	140	100	78	50	66	18	18	M16	4	M27*1.5	8.51
40	520	478	338	324	168	7	150	110	88	60	76	18	18	M16	4	M36*2	27.61
50	520	478	338	324	168	7	165	125	102	72	88	20	18	M16	4	M36*2	28.4

Type B

Nominal Diameter	Structure Size						Flange Size							Bolt		Weight		
	H	H1	H2	L	L1	D10	D0	δ	D	D1	D2	D5	D6	b	d0		Th	n
20	660	450	95	340	130	280	159	7	105	73	58	35	51	16	13	M12	6	40.78
25	660	450	95	340	130	280	159	7	115	83	66	42	58	18	15	M14	6	41.51

32	66 0	45 0	95	34 0	13 0	280	15 9	7	12 5	93	74	50	66	2 0	1 5	M1 4	6	42.49
40	83 0	56 0	14 0	34 0	15 2	345	20 3	7	14 5	10 7	84	60	76	2 2	1 7	M1 6	6	65.87
50	83 0	56 0	14 0	34 0	15 2	345	20 3	7	15 5	117	96	72	88	2 3	1 7	M1 6	6	67.23
65	83 0	56 0	14 0	34 0	15 2	345	20 3	7	17 5	13 7	118	94	110	2 1	1 7	M1 6	8	68.64
80	83 0	56 0	14 0	34 0	15 2	345	20 3	7	19 0	15 2	13 0	10 5	12 1	2 3	1 7	M1 6	8	70.91

## Type BS:

Nominal Diameter	Structure Size								Flange Size							Bolt		Weigh t kg
	H	H1	H2	L	L1	D1 0	D0	δ	D	D1	D2	D5	D6	b	d 0	Th	n	
20	66 0	45 0	95	34 0	13 0	280	15 9	7	10 5	75	58	35	51	1 6	1 4	M1 2	4	40.97
25	66 0	45 0	95	34 0	13 0	280	15 9	7	115	85	68	42	58	1 6	1 4	M1 2	4	41.56
32	66 0	45 0	95	34 0	13 0	280	15 9	7	14 0	10 0	78	50	66	1 8	1 8	M1 6	4	43.05
40	83 0	56 0	14 0	34 0	15 2	345	20 3	7	15 0	110	88	60	76	1 8	1 8	M1 6	4	66.07
50	83 0	56 0	14 0	34 0	15 2	345	20 3	7	16 5	12 5	10 2	72	88	2 0	1 8	M1 6	4	68.39
65	83 0	56 0	14 0	34 0	15 2	345	20 3	7	18 5	14 5	12 2	94	110	2 2	1 8	M1 6	8	70.23
80	83 0	56 0	14 0	34 0	15 2	345	20 3	7	20 0	16 0	13 3	10 5	12 1	2 4	1 8	M1 6	8	72.84