

Jinbo Marine

Marine & Offshore Equipment Datasheet

PRODUCT DATASHEET

MARINE LADDER

Aluminum Gangway (Bend Type)

Standard:CB3116-82, JIS F2613-1796 & ISO7061-1993 Max usage angle:30° Usage situation: embark and disembark for personnel when various types of ships are mooring alongside a deck *It also can be cal...

ISO9001 Supplier

Class Certificate

Export Supply



Key Highlights

Category	Marine Ladder
Standard	JIS
Material	Aluminum Alloy
Weight / Size	Aluminum or steel Size:
Certificate	CCS,DNV,GL, LR, ABS, BV, NK,KR,RINA

We can supply according to your requirement, drawings, class certificate needs, and delivery schedule.

Technical Specifications

Category	Marine Ladder	Model / SKU	Aluminum-Gangway-Bend-Type
Standard	JIS	Material	Aluminum Alloy
Weight / Size	Aluminum or steel Size:	Surface	*The surface of the product is anodized.
Certificate	CCS,DNV,GL, LR, ABS, BV, NK,KR,RINA	Warranty	12 Months unless specified otherwise
Origin	China		

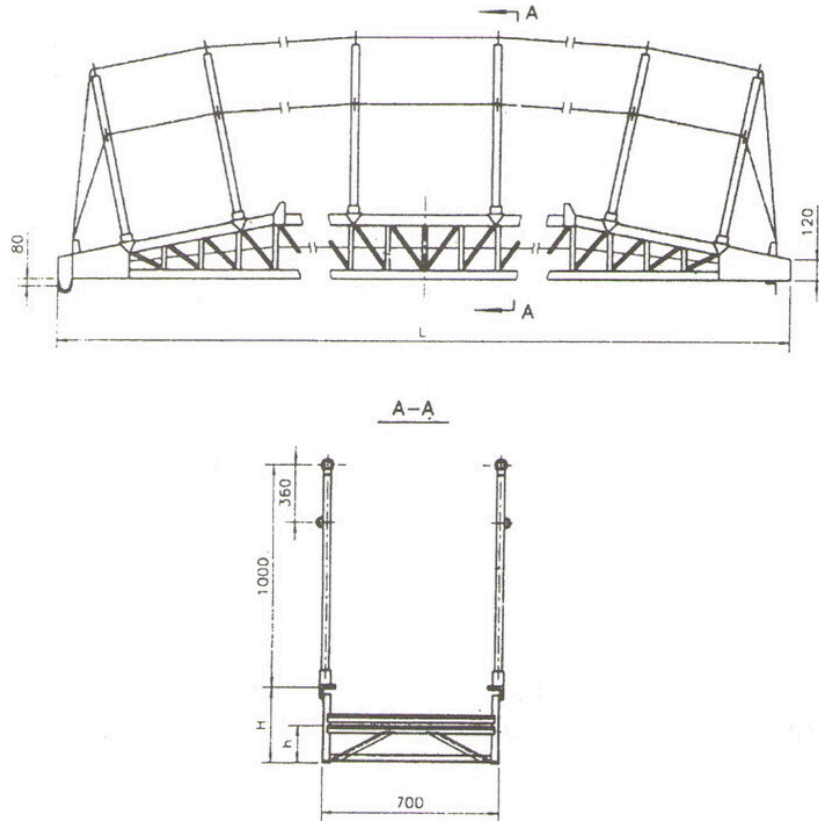
CONTENTS

- China Aluminum Gangway (Bend Type):
- Size:

- Main Material:



Aluminum Gangway (Bend Type) Drawing



China Aluminum Gangway (Bend Type):

Standard: CB3116-82, JIS F2613-1796 & ISO7061-1993

Max usage angle: 30°

Usage situation: embark and disembark for personnel when various types of ships are mooring alongside a deck

*It also can be called as aluminum shore gangway or wharf Ladder

*Normally it is with hook in one side and another side with roller.

*If the length is too long, not suitable for shipment. The ladder can be made with two stages.

*The gangway can be with the safety net. If the safety net is needed, pls specify when inquiry.

*The surface of the product is anodized.

Main Material:

1-Ladder Frame: Aluminum Alloy

2-Rail: Aluminum alloy pipe

3-Rope: Nylon

4-Antislip Strip: Aluminum Alloy

5-Roller: Nylon

6-Hook: Aluminum or steel



Size:

The length and the width are customerized. But the standard width is inside 600mm, outside 700mm. The rail height is fixed 1000mm.