

Jinbo Marine

Marine & Offshore Equipment Datasheet

PRODUCT DATASHEET

MARINE LADDER

Aluminum Wharf Ladder (Bend Type)

Standard:CB3116-82, JIS F2613-1796 & ISO7061-1993 Max usage angle:30° Usage situation: embark and disembark for personnel when various types of ships are mooring alongside a deck *It also can be c...

ISO9001 Supplier

Class Certificate

Export Supply



Key Highlights

Category	Marine Ladder
Standard	JIS
Material	Aluminum Alloy
Weight / Size	Aluminum Alloy or Steel Main Size List(mm):
Certificate	CCS,DNV,GL, LR, ABS, BV, NK,KR,RINA

We can supply according to your requirement, drawings, class certificate needs, and delivery schedule.

Technical Specifications

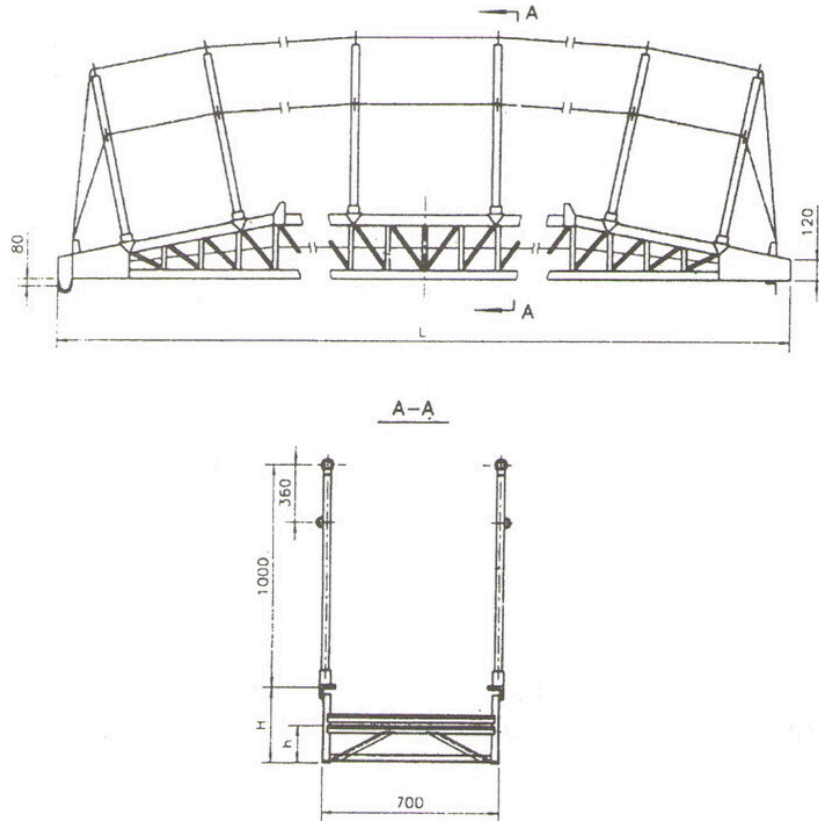
Category	Marine Ladder	Model / SKU	Aluminum-Wharf-Ladder-Bend-Type
Standard	JIS	Material	Aluminum Alloy
Weight / Size	Aluminum Alloy or Steel Main Size List(mm):	Surface	*The surface of the product is anodized.
Certificate	CCS,DNV,GL, LR, ABS, BV, NK,KR,RINA	Warranty	12 Months unless specified otherwise
Origin	China		

CONTENTS

- China Aluminum Wharf Ladder (Bend Type):
- Main Material:
- Main Size List(mm):



Aluminum Wharf Ladder (Bend Type) Drawing



China Aluminum Wharf Ladder (Bend Type):

Standard:CB3116-82, JIS F2613-1796 & ISO7061-1993

Max usage angle:30°

Usage situation: embark and disembark for personnel when various types of ships are mooring alongside a deck

*It also can be called as aluminum gangway or shore gangway.

*Normally it is with hook in one side and another side with roller.

*If the length is too long, not suitable for shipment. The ladder can be made with two parts.

*The wharf ladder also can be with the safety net.

*The surface of the product is anodized.

Main Material:

1-Roller: Nylon

2-Ladder:Alumimum Alloy

3-Rope: Nylon

4-Hook: Aluminum Alloy or Steel

Main Size List(mm):

L	I	H	h	 0.042039s
---	---	---	---	---

8000	3200	350	170
10000	4830	500	250
12500	4830	550	250
15000	7230	750	250

The size in the list is just for reference. The length and the width are customerized. But the standard width is inside 600mm, outside 700mm.