

Jinbo Marine

Marine & Offshore Equipment Datasheet

PRODUCT DATASHEET

WATER TREATMENT EQUIPMENT

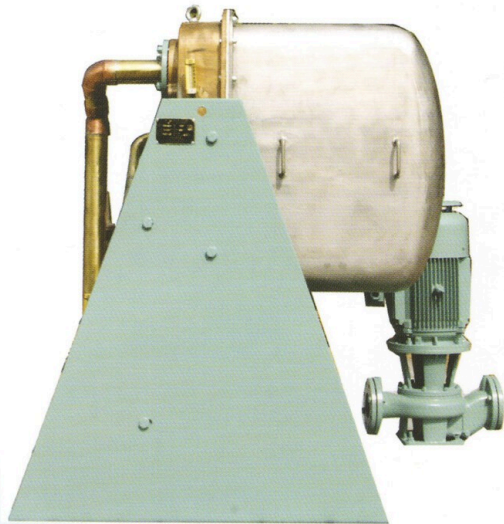
BZF Series Plate Type Fresh Water Generator

ISO9001 Supplier

Class Certificate

Export Supply

Production Description BZF series plate type fresh water generator can produce qualified fresh water by vacuum distillation during the vessel sailing. It was designed for automatic operation with continuous control...



Key Highlights

Category	Water Treatment Equipment
Standard	EN
Material	Steel
Certificate	CCS BV ABS GL

We can supply according to your requirement, drawings, class certificate needs, and delivery schedule.

Technical Specifications

Category	Water Treatment Equipment	Model / SKU	BZF-Series-Plate-Type-Fresh-Water-Generator
Standard	EN	Material	Steel
Certificate	CCS BV ABS GL	Warranty	12 Months unless specified otherwise
Origin	China		

CONTENTS

- Production Description
- Working Principle
- Technical Data

Production Description

BZF series plate type fresh water generator can produce qualified fresh water by vacuum distillation during the vessel sailing. It was designed for automatic operation with continuous control of fresh water quality.

Working Principle

The combined brine & air ejector driven by seawater from the seawater pump creates and maintains a vacuum of 85-95% in the chamber in order to lower the evaporation temperature of the feed water.

After cooling seawater is preheated by plate type condenser, the feed water to be distilled is taken from the sea cooling water outlet of the condenser. It enters the evaporator where it evaporates at about 40-60°C as it passes between the plates heated by the heating medium.

The vapor generated pass through a demister where any drops of seawater entered are removed and fall to the brine sump collector at the bottom of the generator chamber duo to gravity. The clean fresh water vapor enters into the condenser continuously where they condense into fresh water as they pass between the cold plates cooled by the sea cooling water.

Technical Data

Model BZF	BZF-5G	BZF-10G	BZF-15G	BZF-20G	BZF-25G	BZF-30G
Fresh water capacity(m3/d)	5~6	8~10	15~18	20~24	25~30	30~36
Fresh water salinity(ppm)	≤6					
Sea water flux(m3/h)	13~16	28~34	40~50	55~65	67~82	82~98
Sea water inlet temperature(°C)	≤32					
Sea water difference in temperature(°C)	7~10					
Jack water flow(m3/h)	12~15	25~30	36~44	49~58	60~73	73~88
Jacket water inlet temperature(°C)	80					
jacket water difference in temperature(°C)	8~10					

