


MARINE AIR CONDITIONER

# CFP-WA Horizontal Concealed Fan Coil

Description: The fan coil is the complement product for marine air-conditioning system. It has the characteristics of compact structure, little vibration, low noise, and easy installation. CFP-WA horizonta...

- ISO9001 Supplier
- Class Certificate
- Export Supply



### Key Highlights

<b>Category</b>	Marine Air Conditioner
<b>Standard</b>	EN
<b>Weight / Size</b>	°C 7/45 water flow m3/h 1.38 2.06 2.58 4 4.81 6 water pressure loss kPa ...
<b>Certificate</b>	ABS, LR, BV, DNVGL, NK, KR, IRS, RMRS, CCS

We can supply according to your requirement, drawings, class certificate needs, and delivery schedule.

## Technical Specifications

<b>Category</b>	Marine Air Conditioner	<b>Model / SKU</b>	CFP-WA-Horizontal-Concealed-Fan-Coil
<b>Standard</b>	EN	<b>Weight / Size</b>	°C 7/45 water flow m3/h 1.38 2.06 2.58 4 4.81 6 water pressure loss kPa 40 40 45 45 50 55 Fan type motor power kw 0.09 0.09 2x0.09 2x0.25 2x0.45 2x.0.45 Noise dB(A) ≤52 ≤54 ≤57 ≤64 ≤69 ≤69 Dimension:
<b>Certificate</b>	ABS, LR, BV, DNVGL, NK, KR, IRS, RMRS, CCS	<b>Warranty</b>	12 Months unless specified otherwise
<b>Origin</b>	China		

<b>CONTENTS</b>	<ul style="list-style-type: none"> <li>■ Description:</li> <li>■ Dimension:</li> </ul>	<ul style="list-style-type: none"> <li>■ Technical Data:</li> </ul>
-----------------	--	---



## Description:

The fan coil is the complement product for marine air-conditioning system. It has the characteristics of compact structure, little vibration, low noise, and easy installation.

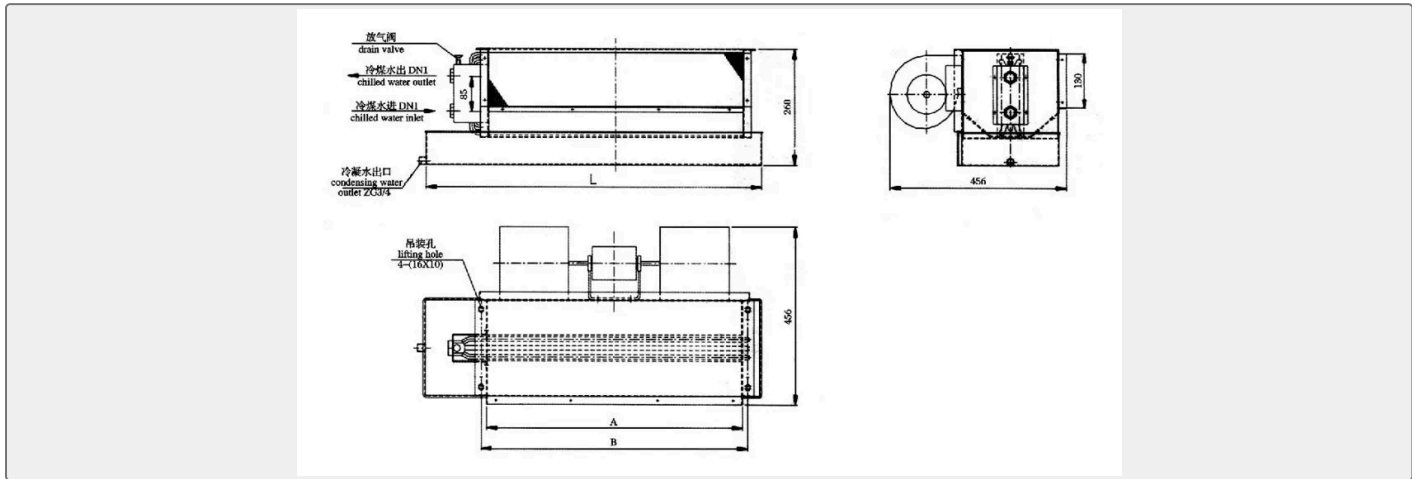
CFP-WA horizontal concealed fan coil is mainly composed of air filter, air heat exchanger, low noise centrifugal fan, knob-type speed regulation switch and electric control box.

## Technical Data:

Type		CFP-2	CFP-3	CFP-4	CFP-5	CFP-6	CFP-7	
Cooling capacity	kw	2	3	4	5	6	7	
Heating capacity	kw	3	4	5	6	7	8	
Namely air flow	m3/h	360	540	720	900	1000	1260	
Cooling medium		7°C chilled water						
Heating medium		≥45°C hot water						
Power supply		AC220V 3P 50HZ/AC 220V 1P 60HZ						
Air coller/heater	type	copper tube A1 fin						
	cold/hot water inlet temp.	°C	7/45					
	water flow	m3/h	0.34	0.52	0.68	0.86	1.03	1.2
	water pressure loss	kPa	20	25	30	35	35	40
Fan	type							
	motor power	kw	0.04	0.04	0.04	0.04	0.04	0.04
Noise	dB(A)	≤42	≤45	≤46	≤48	≤49	≤50	
Type		CFP-8	CFP-12	CFP-15	CFP-23	CFP-28	CFP-35	
Cooling capacity	kw	8	12	15	23	28	35	
Heating capacity	kw	9	14	17	26	82	40	
Namely air flow	m3/h	1140	2160	2700	3600	5000	5400	
Cooling medium		7°C chilled water						
Heating medium		≥45°C hot water						
Power supply		AC220V 3P 50HZ/AC 220V 1P 60HZ						
Air coller/heater	type	copper tube A1 fin						
	cold/hot water inlet temp.	°C	7/45					
	water flow	m3/h	1.38	2.06	2.58	4	4.81	6
	water pressure loss	kPa	40	40	45	45	50	55

Fan	type							
	motor power	kw	0.09	0.09	2x0.09	2x0.25	2x0.45	2x0.45
Noise	dB(A)	≤52	≤54	≤57	≤64	≤69	≤69	

## Dimension:



Model	L	A	H	DN1	Weight kg
CFP-2WA	850	480	530	DN15	21
CFP-3WA	950	580	630	DN15	24
CFP-4WA	1080	700	750	DN20	28
CFP-5WA	1200	800	840	DN20	30
CFP-6WA	1300	880	920	DN20	31