

Jinbo Marine

Marine & Offshore Equipment Datasheet

PRODUCT DATASHEET

MARINE ENGINEER ALARM SYSTEM

CHJ-1F-GF Wall Mounted Central Responder

ISO9001 Supplier

Class Certificate

Export Supply

CHJ-1F-GF Wall Mounted Central Responder 1)Chapter 2 of Part 4 of the"Steel Ship Classification Rules" of the China Classification Society: 2)IMO resolution A.1021 (26) code on alerts and indicators,2009. ...



Key Highlights

Category	Marine Engineer Alarm System
Standard	EN
Material	CHJ-1F-GF Wall Mounted Central Responder 1)Chapter 2 of Part 4 of the"St...
Certificate	ABS, LR, BV, DNVGL, NK, KR, IRS, RMRS, CCS

We can supply according to your requirement, drawings, class certificate needs, and delivery schedule.

Technical Specifications

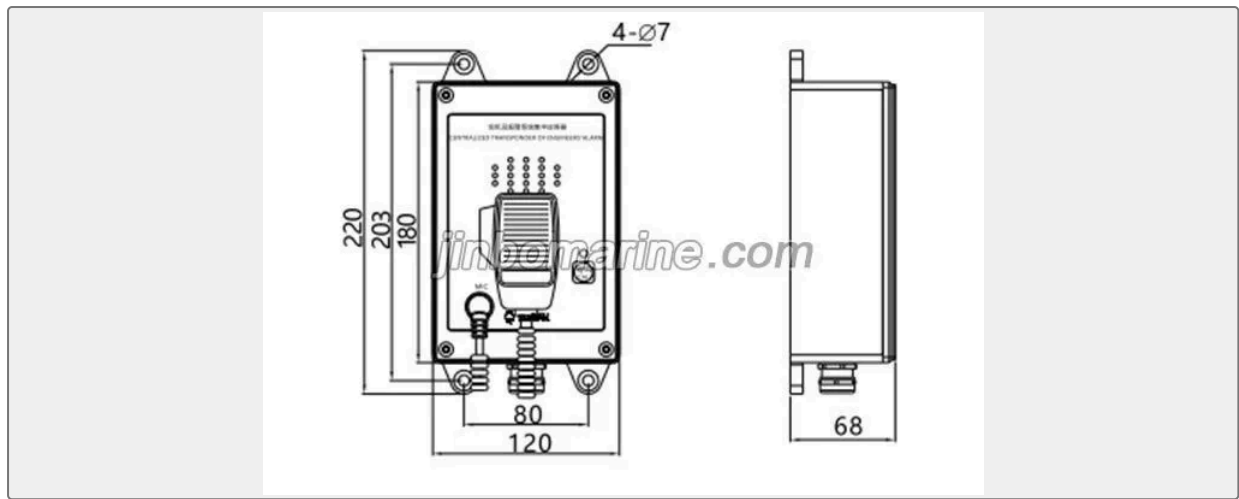
Category	Marine Engineer Alarm System	Model / SKU	CHJ-1F-GF-Wall-Mounted-Central-Responder
Standard	EN	Material	CHJ-1F-GF Wall Mounted Central Responder 1)Chapter 2 of Part 4 of the"Steel Ship Classification Rules" of the China Classification Society:
Certificate	ABS, LR, BV, DNVGL, NK, KR, IRS, RMRS, CCS	Warranty	12 Months unless specified otherwise
Origin	China		

China CHJ-1F-GF Wall Mounted Central Responder:

CHJ-1F-GF Wall Mounted Central Responder

- 1)Chapter 2 of Part 4 of the"Steel Ship Classification Rules" of the China Classification Society:
- 2)IMO resolution A.1021 (26) code on alerts and indicators,2009.





Colour: Dull black

Shell material: ABS+Q235B

Cable gland: 2-PG29,PG16

Call alarm sound level: 75~90dB

IP rating: IP44