

# Jinbo Marine

Marine & Offshore Equipment Datasheet

PRODUCT DATASHEET

## MARINE AIR CONDITIONER

# CLN-105 Marine Condensing Units

Description: CLN-105 Marine condensing units are to provide refrigerant liquid for direct end device of air conditioning system. The unit has features of new-design, easy-operation, stable-working, safety and co...

ISO9001 Supplier

Class Certificate

Export Supply



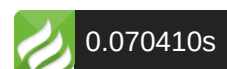
## Key Highlights

Category	Marine Air Conditioner
Standard	EN
Weight / Size	Item CLN-23 CLN-35 CLN-46 CLN-58 CLN-70 CLN-82 Cooling capacity KW 23 35...
Certificate	ABS, LR, BV, DNVGL, NK, KR, IRS, RMRS, CCS

We can supply according to your requirement, drawings, class certificate needs, and delivery schedule.

## Technical Specifications

<b>Category</b>	Marine Air Conditioner	<b>Model / SKU</b>	CLN-105-Marine-Condensing-Units
-----------------	------------------------	--------------------	---------------------------------





			60HZ Protection device High pressure, low pressure,oil pressure, water stop, lack phase, overload and safety valve Compressor Type Hermetic or semi-hermetic compressor Energy regulation % 0,50,75,100 or(0,50,66,100) motor power KW 2x24 2x26 2x30 2x33 2x37 2x40.5 Condensor type Horizontal sheel&tube water inlet temp °C ≤36 water flow m3/h 52 55 65 72 80 95 water pressure loss kPa ≤80 weight kg 2100 2150 2200 2250 2550 2750 Dimension:
<b>Certificate</b>	ABS, LR, BV, DNVGL, NK, KR, IRS, RMRS, CCS	<b>Warranty</b>	12 Months unless specified otherwise
<b>Origin</b>	China		

<b>CONTENTS</b>	■ Description:	■ Technical Data:
	■ Dimension:	

## Description:

CLN-105 Marine condensing units are to provide refrigerant liquid for direct end device of air conditioning system. The unit has features of new-design, easy-operation, stable-working, safety and convenient-maintaining etc. they have widely applied for all kinds of passenger ships, cargo ships and oil platforms etc.

Mainly composed by compressor, condenser and control box etc.

Pressure test, vacuum test and running test have been done before delivery.

Match with proper direct end device to form an integral system.

Special design and manufacture can be done upon user’s requirement.

## Technical Data:

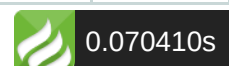
Item		CLN-23	CLN-35	CLN-46	CLN-58	CLN-70	CLN-82
Cooling capacity	KW	23	35	46	58	70	82
Cooling medium		R22(R134a, R404A, R407C)					
Power supply	main circuit	AC380V 3P 50HZ/AC 440V 3P 60HZ					
	control circuit	AC220V 1P 50HZ/AC 220V 1P 60HZ					
Protection device		High pressure, low pressure,oil pressure, water stop, lack phase, overload and safety valve					



Copressor	Type	Hermetic or semi-hermetic compressor						
	Energy regulation	%	/				0,50,100 or(0,66,100)	
	motor power	KW	42	66	90	15	19	22
Condensor	type	Horizontal sheel&tube						
	water inlet temp	°C	≤36					
	water flow	m3/h	3	7	10	13.5	17	20
	water pressure loss	kPa	≤50			≤70		
weight	kg	680	900	1000	1000	1100	1200	

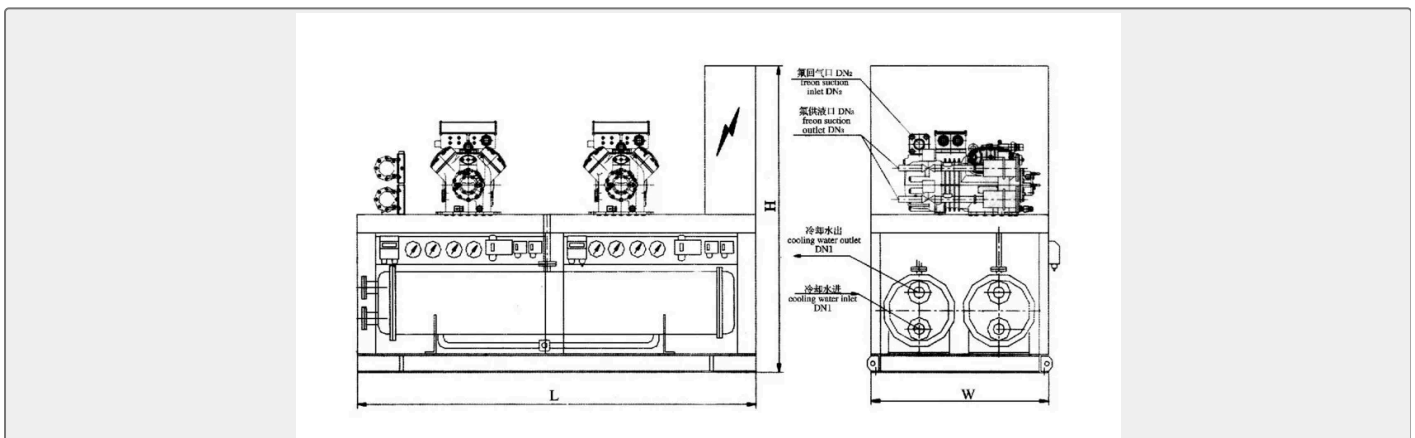
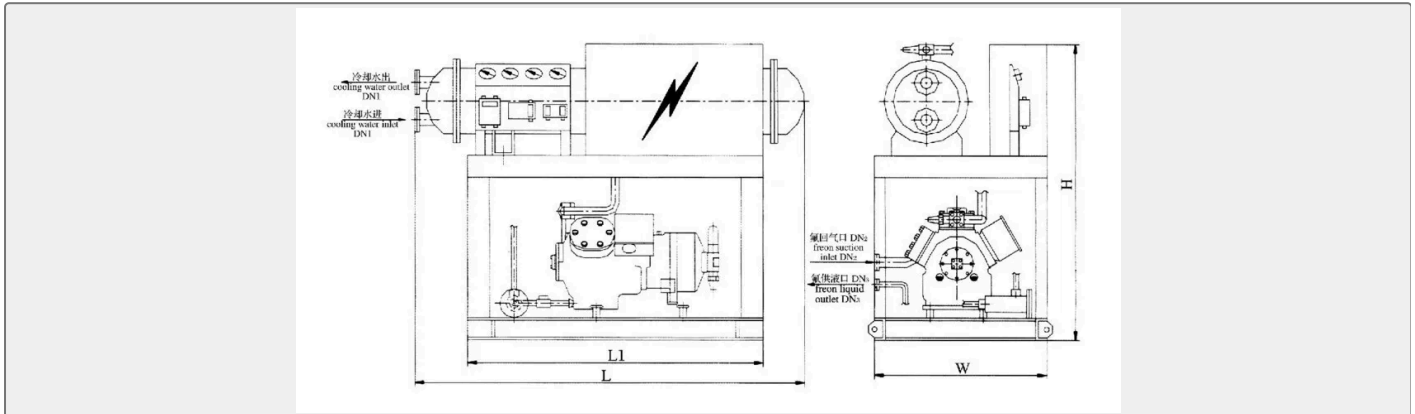
Item		CLN-93	CLN-105	CLN-116	CLN-140	CLN-151	CLN-175	
Cooling capacity	KW	93	105	116	140	151	175	
Cooling medium		R22(R134a, R404A, R407C)						
Power supply	main circuit	AC380V 3P 50HZ/AC 440V 3P 60HZ						
	control circuit	AC220V 1P 50HZ/AC 220V 1P 60HZ						
Protection device		High pressure, low pressure,oil pressure, water stop, lack phase, overload and safety valve						
Compressor	Type	Hermetic or semi-hermetic compressor						
	Energy regulation	%	/			0,50,100 or(0,66,100)		
	motor power	KW	24	26	30	37	2x22	2x24
Condensor	type	Horizontal sheel&tube						
	water inlet temp	°C	≤36					
	water flow	m3/h	27	30	35	40	45	50
	water pressure loss	kPa	≤80					
weight	kg	1300	1350	1450	1580	1850	1950	

Item		CLN-186	CLN-198	CLN-230	CLN-256	CLN-267	CLN-302
Cooling capacity	KW	186	198	230	256	267	302
Cooling medium		R22(R134a, R404A, R407C)					
Power supply	main circuit	AC380V 3P 50HZ/AC 440V 3P 60HZ					
	control circuit	AC220V 1P 50HZ/AC 220V 1P 60HZ					
Protection device		High pressure, low pressure,oil pressure, water stop, lack phase, overload and safety valve					
Compressor	Type	Hermetic or semi-hermetic compressor					
	Energy regulation	%	0,50,75,100 or(0,50,66,100)				
	motor power	KW	2x24	2x26	2x30	2x33	2x37

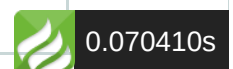


Condensor	type	Horizontal sheel&tube						
	water inlet temp	°C	≤36					
	water flow	m3/h	52	55	65	72	80	95
	water pressure loss	kPa	≤80					
weight	kg	2100	2150	2200	2250	2550	2750	

## Dimension:



Model	L	W	H	L1	DN1	DN2	DN3
CLN-23	1250	700	1450	820	32	25	13
CLN-35	1550	700	1450	950	40	32	13
CLN-46	1550	750	1500	980	50	40	16
CLN-58	1880	750	1500	1100	50	40	19
CLN-70	1800	750	1500	1250	50	50	19
CLN-82	1850	850	1600	1100	65	50	19
CLN-93	1850	850	1600	1100	65	50	19
CLN-105	1850	850	1600	1100	65	50	19
CLN-116	1850	850	1750	1100	65	50	19
CLN-140	1850	900	1750	1350	80	50	



Model	L	W	H	DN1	DN2	DN3
CLN-151	2050	980	1700	2-DN65	2-DN50	2-DN19
CLN-175	2050	980	1800	2-DN65	2-DN50	2-DN19
CLN-186	2150	980	1800	2-DN65	2-DN50	2-DN19
CLN-198	2150	1080	1800	2-DN65	2-DN50	2-DN19
CLN-230	2350	1150	1800	2-DN65	2-DN50	2-DN19
CLN-256	2350	1150	1920	2-DN80	2-DN50	2-DN25
CLN-267	1480	1250	1920	2-DN80	2-DN50	2-DN25
CLN-302	2580	1350	1980	2-DN100	2-DN50	2-DN25