

**HAND PUMP**

# CYL-25 semi-rotary hand pump

CYL-25 semi-rotary hand pump CYL semi-rotary hand pump for pumping water, gasoline, kerosene and on iron and copper and other non-corrosive liquid, do not apply to contain fibers or other solids in the liquid, the ...

- ISO9001 Supplier
- Class Certificate
- Export Supply



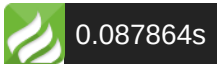
### Key Highlights

<b>Category</b>	Hand Pump
<b>Standard</b>	EN
<b>Weight / Size</b>	Model Explanation CYL-25 Half twist-action hand pump Inlet and outlet ...
<b>Certificate</b>	ABS, LR, BV, DNVGL, NK, KR, IRS, RMRS, CCS

We can supply according to your requirement, drawings, class certificate needs, and delivery schedule.

### Technical Specifications

<b>Category</b>	Hand Pump	<b>Model / SKU</b>	CYL-25-semi-rotary-hand-pump
<b>Standard</b>	EN	<b>Weight / Size</b>	Model Explanation CYL-25 Half twist-action hand pump Inlet and outlet diameter 15mm Performance Parameter Type Capacity (V/min) Head (m) Inlet vacuum height (m) Weight (kg) CYL-15 15 14 5 5 CYL-20 20 14 5 5.5 CYL-25 25 26 6 7.5 CYL-32 28 26 6 9 CYL-40 65 18 6.5 22.5 CYL-50 105 18 6.5 34.5
<b>Certificate</b>	ABS, LR, BV, DNVGL, NK, KR, IRS, RMRS, CCS	<b>Warranty</b>	12 Months unless specified otherwise
<b>Origin</b>	China		



**CONTENTS**

- CYL-25 semi-rotary hand pump
- Performance Parameter

- Model Explanation CYL-25

## CYL-25 semi-rotary hand pump

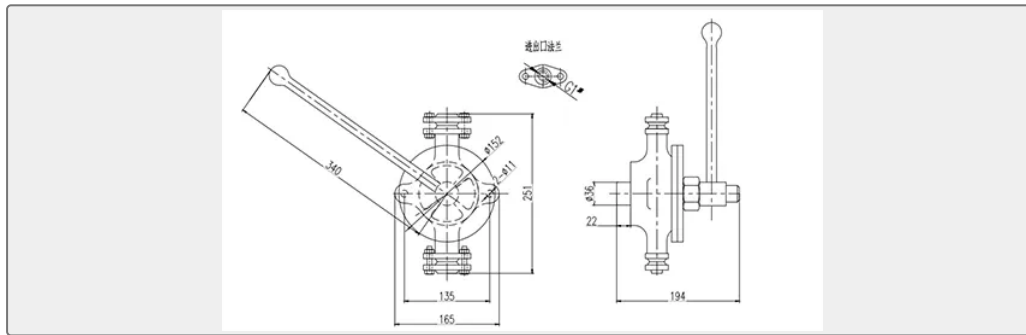
CYL semi-rotary hand pump for pumping water, gasoline, kerosene and on iron and copper and other non-corrosive liquid, do not apply to contain fibers or other solids in the liquid, the suction liquid temperature under 60°C. CYL hand pump has the advantages of compact structure, elegant style, convenient and reliable use. Available for shipping, mining, enterprises, schools, and other units to use vehicles.

## Model Explanation CYL-25

Half twist-action hand pump

Inlet and outlet diameter 15mm

## Performance Parameter



Type	Capacity (V/min)	Head (m)	Inlet vacuum height (m)	Weight (kg)
CYL-15	15	14	5	5
CYL-20	20	14	5	5.5
CYL-25	25	26	6	7.5
CYL-32	28	26	6	9
CYL-40	65	18	6.5	22.5
CYL-50	105	18	6.5	34.5