

Jinbo Marine

Marine & Offshore Equipment Datasheet

PRODUCT DATASHEET

MARINE OIL WATER SEPERATOR

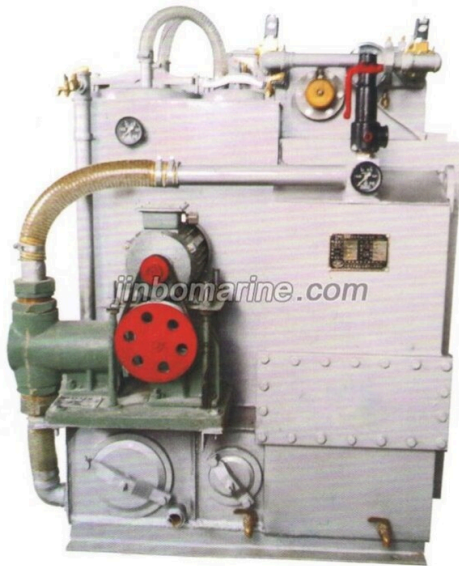
CYSC(USH)Marine Oily-Water Separator

ISO9001 Supplier

Class Certificate

Export Supply

Product Description: CYSC oil water separator is used to treat ship's bilge water ,make the oil content in effluent water \leq 15ppm,satisfy with the requirements of IMO MEPC.107(49). The device consists with two...



Key Highlights

Category	Marine Oil Water Seperator
Standard	EN
Material	Steel
Weight / Size	Data Model CYSC(USH) -0.1 CYSC(USH) -0.25 CYSC(USH) -0.5 CYSC(USH) -1.0 ...
Certificate	CCS

We can supply according to your requirement, drawings, class certificate needs, and delivery schedule.

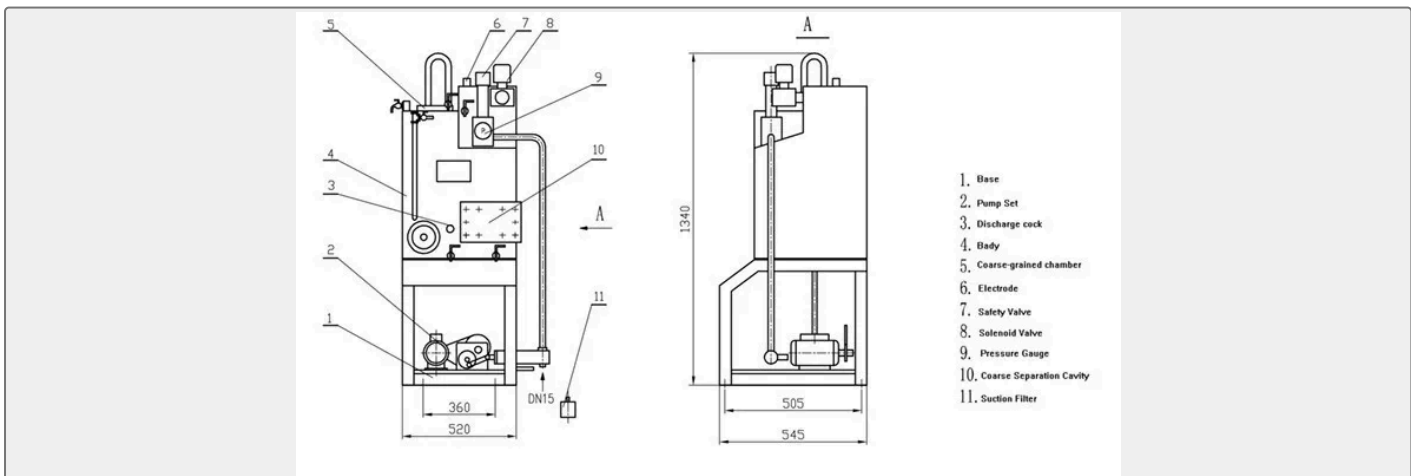
Technical Specifications			
Category	Marine Oil Water Separator	Model / SKU	CYSC-USH-Marine-Oily-Water-Separator
Standard	EN	Material	Steel
Weight / Size	Data Model CYSC(USH) -0.1 CYSC(USH) -0.25 CYSC(USH) -0.5 CYSC(USH) -1.0 CYSC(USH) -1.5 CYSC(USH) -2.0 Capacity(M3/H) 0.1 0.25 0.5 1 1.5 2 Working Pressure <0.2Mpa Pump and motor Electric Peciprocating Pump 0.25kw 0.25kw 0.37kw 0.55kw 0.75kw 0.75kw (or)Electric single pump 0.75kw Standard of Discharged water <15ppm Suction Height 5M 6M Electri control panel DC 110V AC3-phase 380V 50Hz DC 220v Oil discharge Control Automatic and Control Heating Electric Heater Weight(kg) 75 125 210 445 780 910	Certificate	CCS
Warranty	12 Months unless specified otherwise	Origin	China

CONTENTS

- Product Description:

- Technical Data:

Product Description:



CYSC oil water separator is used to treat ship's bilge water ,make the oil content in effluent water \leq 15ppm,satisfy with the requirements of IMO MEPC.107(49). The device consists with two stages separator, dedicated pumps, coarse strainer, electric control box etc. THE device can automatic discharge of oil, automatic alarm and manual discharge oil

in emergency.

CYSC oil-water separator is suitable for treating the large bilge water. The device work stably. Within the scope of the tilt 22.5 ° in any direction, all can work reliably.



Technical Data:

Data Model	CYSC(USH) -0.1	CYSC(USH) -0.25	CYSC(USH) -0.5	CYSC(USH) -1.0	CYSC(USH) -1.5	CYSC(USH) -2.0
Capacity(M3/H)	0.1	0.25	0.5	1	1.5	2
Working Pressure	<0.2Mpa					
Pump and motor	Electric Peciprocating Pump					
	0.25kw	0.25kw	0.37kw	0.55kw	0.75kw	0.75kw
	(or)Electric single pump					
	0.75kw					
Standard of Discharged water	<15ppm					
Suction Height	5M				6M	
Electri control panel	DC 110V AC3-phase 380V 50Hz DC 220v					
Oil discharge Control	Automatic and Control					
Heating	Electric Heater					
Weight(kg)	75	125	210	445	780	910