

**LIFEBOAT AND RESCUE BOAT ACCESSORIES**

# DC Stabilized Power Supply PR2430A

DC Stabilized Power Supply PR2430A This stabilized power supply is a high-precision output Multiple protection functions. Compact and sturdy structure, specifically designed for communication radio sta...

- ISO9001 Supplier
- Class Certificate
- Export Supply



## Key Highlights

<b>Category</b>	Lifeboat And Rescue Boat Accessories
<b>Standard</b>	EN
<b>Weight / Size</b>	Size:
<b>Certificate</b>	ABS, LR, BV, DNVGL, NK, KR, IRS, RMRS, CCS

We can supply according to your requirement, drawings, class certificate needs, and delivery schedule.

## Technical Specifications

<b>Category</b>	Lifeboat And Rescue Boat Accessories	<b>Model / SKU</b>	DC-Stabilized-Power-Supply-PR2430A
<b>Standard</b>	EN	<b>Weight / Size</b>	Size:
<b>Certificate</b>	ABS, LR, BV, DNVGL, NK, KR, IRS, RMRS, CCS	<b>Warranty</b>	12 Months unless specified otherwise
<b>Origin</b>	China		

**CONTENTS**

- DC Stabilized Power Supply PR2430A
- Technical data:

## DC Stabilized Power Supply PR2430A

This stabilized power supply is a high-precision output

Multiple protection functions. Compact and sturdy structure, specifically designed for communication radio stations

A set of charging and stabilizing power supplies, especially suitable for public security, water conservancy

Used by transportation departments and ships.



Before using this product, one should be familiar with its performance, characteristics, and Operation method.



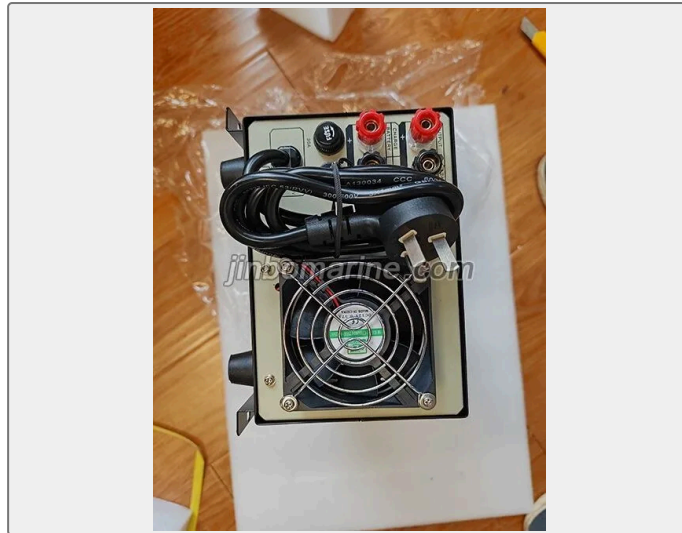
1. It has the function of displaying output voltage, current, and input status
2. High precision voltage regulation, with an accuracy coefficient of less than 0.1% for output DC voltage regulation.
3. Automatic overvoltage protection. If the output voltage is higher than the normal output voltage range, the mains power input will be automatically cut off to ensure the safe operation of your radio station.
4. Automatic overcurrent protection, if the output current is greater than the maximum value or the load is short circuited, it will automatically limit and fold back to the control current value.

Wide voltage range and compatible with 220VAC/110VAC

5. Automatically switch to battery power supply during power outage to ensure smooth and reliable communication.

## Technical data:





1. Input voltage range: 198-242VAC
2. Output voltage: 24V  $\pm$  0.2V
3. Rated current: 30A
4. Ripple voltage: <10mV
5. Source effect:  $\leq 5 \times 10^{-}$
6. Load effect:  $\leq 5 \times 10^{-}$
7. Efficiency:  $\geq 50\%$
8. Overcurrent protection: 31-35A
9. Overvoltage protection: 33V  $\pm$  2V
10. Battery voltage: 24V
11. Conversion function: Automatically switch from 24V battery output during power outage (AC voltage  $\leq 185$ V when converted to battery power; AC voltage  $>185$ V  $\leq 205$ V when restored to AC power)
12. Electrical strength:  $>1500$ VAC
13. Insulation resistance:  $>10$ M  $\Omega$
14. Leakage current:  $\leq 0.5$ MA
15. Using a multimeter to measure the voltage range, the output negative pole of the external passenger pair of the chassis cannot be positively charged
16. The loaded fan can be started
17. Size: 200X135X375 (mm) 15KGS