

Jinbo Marine

Marine & Offshore Equipment Datasheet

PRODUCT DATASHEET

EYE BOLTS & NUTS

DIN 582 Eye Nut

Main Specification Drop Forged Material: Q235, 45# Steel Finish: Galvanized Size Table Size d WLL t WLL t ...

ISO9001 Supplier

Class Certificate

Export Supply



Key Highlights

Category	Eye Bolts & Nuts
Standard	DIN
Material	Q235,45#
Weight / Size	Galvanized Size Table Size d WLL t WLL t DIMENSIONS Weight kg d1 d2 mm d...
Certificate	ABS, LR, BV, DNVGL, NK, KR, IRS, RMRS, CCS

We can supply according to your requirement, drawings, class certificate needs, and delivery schedule.



Technical Specifications			
Category	Eye Bolts & Nuts	Model / SKU	DIN-582-Eye-Nut
Standard	DIN	Material	Q235,45#
Weight / Size	Galvanized Size Table Size d WLL t WLL t DIMENSIONS Weight kg d1 d2 mm d3 e h k M6* - - 20 36 20 8.5 18 8 4.9 M8* 0.14 0.095 20 36 20 8.5 18 8 5 M10* 0.23 0.17 25 45 25 10 22 10 9 M12 0.34 0.24 30 54 30 11 26 12 16 M16 0.7 0.5 35 63 35 13 30 14 24 M20 1.2 0.83 40 72 40 16 35 16 36 M22* 1.5 1.05 45 81 45 18 40 18 58 M24 1.8 1.27 50 90 50 20 45 20 72 M27* 2.5 1.65 50 90 50 20 45 20 70 M30 3.6 2.6 65 108 60 25 55 24 132 M33* 4.3 3.2 65 108 60 25 55 24 130 M36 5.1 3.7 75 126 70 30 65 28 208 M39* 6.1 4.3 75 126 70 30 65 28 202 M42 7 5 85 144 80 35 75 32 311 M45* 8 5.5 85 144 80 35 75 32 304 M48 8.6 6.1 100 166 90 40 85 38 502 M52* 9.9 7.3 100 166 90 40 85 38 495 M56 11.5 8.3 110 184 100 45 95 42 669 M64 16 11 120 206 110 50 105 48 930	Surface	Galvanized
Certificate	ABS, LR, BV, DNVGL, NK, KR, IRS, RMRS, CCS	Warranty	12 Months unless specified otherwise
Origin	China		

CONTENTS

 Main Specification

 Size Table

Main Specification

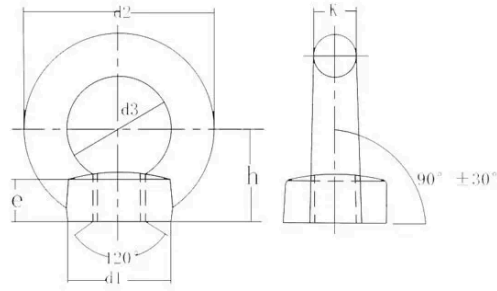
Drop Forged

Material: Q235, 45# Steel

Finish: Galvanized



Size Table



Size d	WLL t	WLL t	DIMENSIONS						Weight kg
			d1	d2 mm	d3	e	h	k	
M6*	-	-	20	36	20	8.5	18	8	4.9
M8*	0.14	0.095	20	36	20	8.5	18	8	5
M10*	0.23	0.17	25	45	25	10	22	10	9
M12	0.34	0.24	30	54	30	11	26	12	16
M16	0.7	0.5	35	63	35	13	30	14	24
M20	1.2	0.83	40	72	40	16	35	16	36
M22*	1.5	1.05	45	81	45	18	40	18	58
M24	1.8	1.27	50	90	50	20	45	20	72
M27*	2.5	1.65	50	90	50	20	45	20	70
M30	3.6	2.6	65	108	60	25	55	24	132
M33*	4.3	3.2	65	108	60	25	55	24	130
M36	5.1	3.7	75	126	70	30	65	28	208
M39*	6.1	4.3	75	126	70	30	65	28	202
M42	7	5	85	144	80	35	75	32	311
M45*	8	5.5	85	144	80	35	75	32	304
M48	8.6	6.1	100	166	90	40	85	38	502
M52*	9.9	7.3	100	166	90	40	85	38	495
M56	11.5	8.3	110	184	100	45	95	42	669
M64	16	11	120	206	110	50	105	48	930