

Jinbo Marine

Marine & Offshore Equipment Datasheet

PRODUCT DATASHEET

WARPING ROLLER

DIN 81906-1999 Fairlead Roller

Warping roller(also known as fairlead roller) is used for rope or cable leading..It is made from cast iron or cast steel material,increased the durability,good wear and corrosion resistance to ensure a long service ti...

ISO9001 Supplier

Class Certificate

Export Supply



Key Highlights

Category	Warping Roller
Standard	DIN
Material	cast steel,cast iron
Weight / Size	D D1 D2 d d1 H h1 s a Fa Weight (mm) (mm) (mm) (mm) (mm) (mm) (mm) (mm) ...
Certificate	ABS, BV, CCS,mill certificate etc.

We can supply according to your requirement, drawings, class certificate needs, and delivery schedule.



Technical Specifications			
Category	Warping Roller	Model / SKU	DIN-81906-1999-Fairlead-Roller
Standard	DIN	Material	cast steel,cast iron
Weight / Size	D D1 D2 d d1 H h1 s a Fa Weight (mm) (mm) (mm) (mm) (mm) (mm) (mm) (mm) (mm) (KN) (KG) D8R- 001 160 195 210 60 85 80 50 2 12 10 14 D8R-002 200 245 265 70 102 102 50 3 12 20 20 D8R-003 250 300 330 85 126 126 50 3 15 32 33 D8R-004 320 390 420 106 160 160 50 3 15 50 72 D8R-005 400 490 530 125 208 208 60 3 18 80 140 D8R-006 450 560 610 160 256 256 85 3 18 125 240 D8R-007 500 620 640 190 278 278 100 5 20 200 320 D8R-008 560 740 780 230 348 348 150 5 20 320 580	Surface	2.Finish:
Certificate	ABS, BV, CCS,mill certificate etc.	Warranty	12 Months unless specified otherwise
Origin	China		

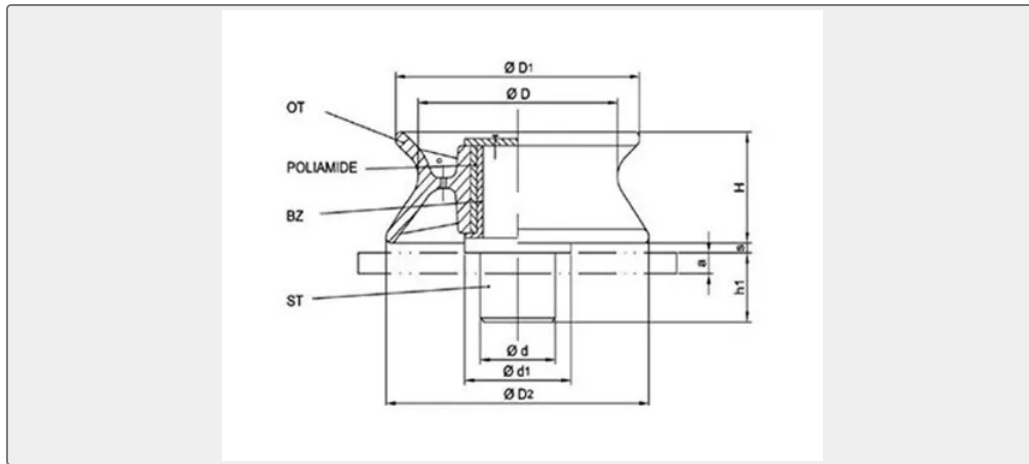
CONTENTS	<ul style="list-style-type: none"> ■ China DIN 81906-1999 Fairlead Roller: <ul style="list-style-type: none"> ■ Specification: ■ Drawing:
-----------------	---

China DIN 81906-1999 Fairlead Roller:

Warping roller(also known as fairlead roller) is used for rope or cable leading..It is made from cast iron or cast steel material,increased the durability,good wear and corrosion resistance to ensure a long service time.

- 1.Certificate: ABS, LR, BV, GL, DNV, CCS,mill certificate etc.
- 2.Finish: Epoxy finishing
- 3.Can be designed according to customers requirements.

Drawing:



Specification:

DIN 81906-1999 Fairlead roller

Product No.	D	D1	D2	d	d1	H	h1	s	a	Fa	Weight
	(mm)	(mm)	(mm)	(mm)	(mm)	(mm)	(mm)	(mm)	(mm)	(KN)	(KG)
D8R-001	160	195	210	60	85	80	50	2	12	10	14
D8R-002	200	245	265	70	102	102	50	3	12	20	20
D8R-003	250	300	330	85	126	126	50	3	15	32	33
D8R-004	320	390	420	106	160	160	50	3	15	50	72
D8R-005	400	490	530	125	208	208	60	3	18	80	140
D8R-006	450	560	610	160	256	256	85	3	18	125	240
D8R-007	500	620	640	190	278	278	100	5	20	200	320
D8R-008	560	740	780	230	348	348	150	5	20	320	580