

Jinbo Marine

Marine & Offshore Equipment Datasheet

PRODUCT DATASHEET

MARINE BOLLARD

DIN 82607-1995 Ship Use Double Bollard

ISO9001 Supplier

Class Certificate

Export Supply

Feature: 1.Long working life 2.Highquality with competitive price. 3.Can be customized.

Dimension table: Double Bollard DIN 82607-1995 Product No. Type ...



Key Highlights

Category	Marine Bollard
Standard	DIN
Material	steel
Weight / Size	Dimension table:
Certificate	mill certificate.
We can supply according to your requirement, drawings, class certificate needs, and delivery schedule.	

Technical Specifications

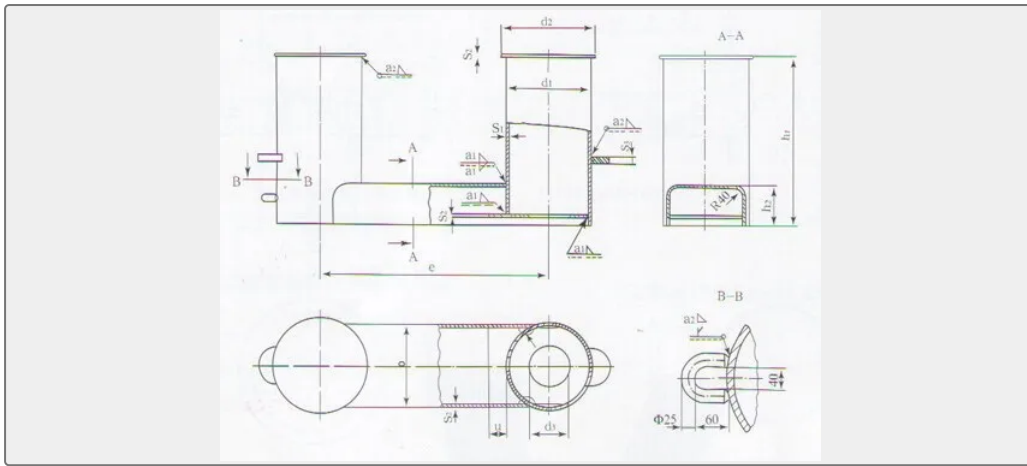
Category	Marine Bollard	Model / SKU	DIN-82607-1995-Ship-Use-Double-Bollard
Standard	DIN	Material	steel
Weight / Size	Dimension table:	Certificate	mill certificate.
Warranty	12 Months unless specified otherwise	Origin	China

CONTENTS

- Feature:

- Dimension table:





Feature:

1. Long working life
2. High quality with competitive price.
3. Can be customized.

Dimension table:

Double Bollard DIN 82607-1995										
Product No.	Type	Rated Towing Pull (kN)	d1*s1	b	d2	e±10	h1	h2	s2	Weight(kg)
BDB-001	D1	10	139.7*6.3	130	160	430	370	105	5	20.6
BDB-002	D2	20	219.1*8.0	180	242	570	475	115	6	52.3
BDB-003	D3	32	273.0*10.0	250	300	700	570	135	8	99.5
BDB-004	D5	50	323.9*10.0	300	355	880	670	150	8	145.4
BDB-005	D8	80	355.6*14.2	330	390	1050	780	175	10	259.4
BDB-006	D12	120	457.0*16.0	420	490	1200	860	195	16	437
BDB-007	D20	200	508.0*17.5	470	545	1350	970	230	16	571
BDB-008	D32	320	559.0*20.0	530	600	1400	1000	270	16	830

Material: Steel

Warranty: 2 Years

Working Time: 10-15 Years

Certificate: ABS, LR, NK, GL, DNV, BV, CCS

Custom made