

# Jinbo Marine

Marine &amp; Offshore Equipment Datasheet

PRODUCT DATASHEET

## WARPING ROLLER

# DIN81907-1997 Marine Mooring Fairleads Roller With Pedestal

We can provide DIN 81906-1999 Fairlead roller, NS2585 Type Marine warping roller----Also known as GB 10105-88 warping roller, JIS F2014-1987 fairlead roller, KOREAN WARPING ROLLER, CB58-83 fairlead roller Cleat fairle...

ISO9001 Supplier

Class Certificate

Export Supply



## Key Highlights

Category	Warping Roller
Standard	JIS
Material	cast steel, cast iron
Certificate	ABS, BV, CCS, mill certificate etc.

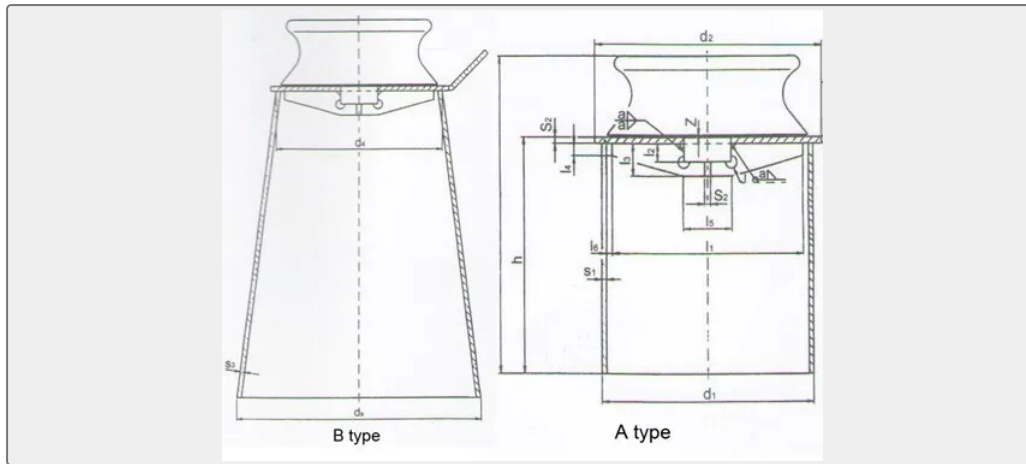
We can supply according to your requirement, drawings, class certificate needs, and delivery schedule.

## Technical Specifications

Category	Warping Roller	Model / SKU	DIN81907-1997-Marine-Mooring-Fairleads-Roller-With-Pedestal
Standard	JIS	Material	cast steel, cast iron
Certificate	ABS, BV, CCS, mill certificate etc.	Warranty	12 Months unless specified otherwise
Origin	China		

 0.035716s

## China DIN81907-1997 Marine Mooring Fairleads Roller With Pedestal:



We can provide DIN 81906-1999 Fairlead roller, NS2585 Type Marine warping roller----Also known as GB 10105-88 warping roller, JIS F2014-1987 fairlead roller, KOREAN WARPING ROLLER, CB58-83 fairlead roller

Cleat fairlead with single roller CB436-2000 A type, Cleat fairlead with single roller CB436-2000 B type, Double Warping Roller With Plate, DIN81907 1997 Fairleads roller, A type Fairlead Rollers etc.

DIN81907-1997 Marine mooring fairleads roller with pedestal A type / B type					
Product No.	model number	d1*s1	d2	b	d4
CFD-001	1	219*12.5	255	60	-
CFD-002	2	273*12.5	310	60	-
CFD-003	3	355*12.5	395	60	-
CFD-004	5	457*12.5	495	60	-
CFD-005	8	559*12.5	595	80	560
CFD-006	12	660*14.2	705	80	660
CFD-007	20	660*17.5	705	100	660
CFD-008	32	813*16	865	100	810