

# Jinbo Marine

Marine &amp; Offshore Equipment Datasheet

PRODUCT DATASHEET

## BOW THRUSTER

## Electric Bow Thrusters

Electric generator bow thruster features environmental protection, reliability, high efficiency, endurance, and easy to maintain. Driven by electricity generator optimized the propeller's diameter speed combination, improved t...

ISO9001 Supplier

Class Certificate

Export Supply



### Key Highlights

Category	Bow Thruster
Standard	DIN
Certificate	CCS, ABS, LR, BV, DNV etc.

We can supply according to your requirement, drawings, class certificate needs, and delivery schedule.

### Technical Specifications

Category	Bow Thruster	Model / SKU	Electric-Bow-Thrusters
Standard	DIN	Certificate	CCS, ABS, LR, BV, DNV etc.
Warranty	12 Months unless specified otherwise	Origin	China

#### CONTENTS

- China Electric Bow Thrusters:
- Environmental condition:
- Parameter:
- Advantages:

### China Electric Bow Thrusters:

Electric generator bow thruster features environmental protection, reliability, high efficiency, endurance, and easy to maintain. Driven by electricity generator optimized the propeller's diameter speed combination, improved the propulsion efficiency, reduce the diameter speed while keep the same thrust force.

### Parameter:

Drive power: 50KW-2000KW.

Thrust force: 8KN-260KN.



Propeller diameter:500mm-2800mm.

## Environmental condition:

The bow thruster will have normal and reliable running in following environment. Ambient temperature: -28oC—+55oC/

Relative humidity: 95% ( the relative humidity of installation environment of vibrate frequency starter and electric control device is 80%, and should have forced ventilation measures )

Rolling:±22.5 ;Heel:±15

Trim: ±5 ;Pitching:±7.5/

With salt fog, oil fog, mold and vibration and impact from normally sail.

## Advantages:

For extreme load conditions, e.g. in the offshore sector

For continuous and short-time service

Low noise emission

Available with either fixed or controllable-pitch propellers

Compact design due to horizontal, vertical or inclined arrangement of the power input flange

Composition of equipment

a.set of side thrust unit, including standard catheter, propeller, propeller shaft, engaged arc bevel gear, etc.

b.set of couplings

c.set of motor supports

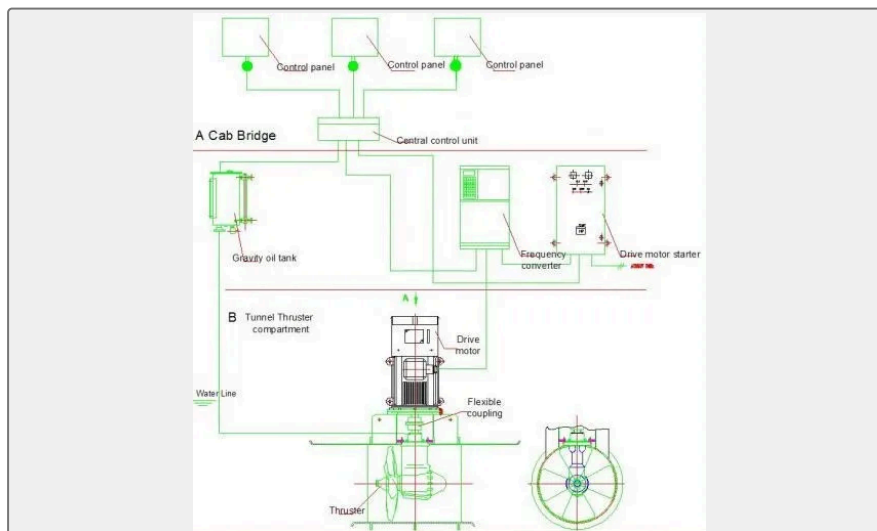
d.gravity oil tank

e.drive motor

f.variable frequency speed regulator

g.set of electric control device (Control point is three)

h) Corrosion-resistant Zinc pieces



Fixed pitch propeller tunnel thruster parameters												
Model	FP-500	FP-600	FP-700	FP-800	FP-900	FP-1000	FP-1100	FP-1300	FP-1480	FP-1650	FP-2000	FP-2400
Max input power	63/72	90/105	135/165	180/190	200/235	280/290	315/340	445/480	560/620	680/730	1050/900	1580/1720
Ratio	1.52	2.071	2.07	2.417	2.42	3.09	3.09	3.78	4.364	4.73	4.82	4.63
Max input torque	600	900	900	1400	1400	2100	2100	3000	3800	4500	7250	15400
Max input speed	1450/1750	1450/1750	1450/1750	1450/1750	1450/1750	1450/1750	1450/1750	1450/1750	1450/1750	1450/1750	1450/190	980/1190
Propeller speed	954/1151	700/845	700/845	600/724	600/724	469.1/566	469.1/566	384/463	332.3/401	307/370	301/247	211/257
Propeller diameter	500	600	700	800	900	1000	1100	1300	1480	1650	2000	2400
Max thrust	10/11.2	14.5/16.3	20/24.8	29.5/30.5	31/35.4	43/45.2	49/53.8	67/73	88/95	105/110	165/150	250/260
Cylinder length	600	800	800	920	920	1045	1045	1190	1320	1446	1680	1990
Cylinder internal	515	615	715	818	918	1020	1120	1328	1510	1680	2030	2430