

## MARINE ENGINE TELEGRAPH SYSTEM

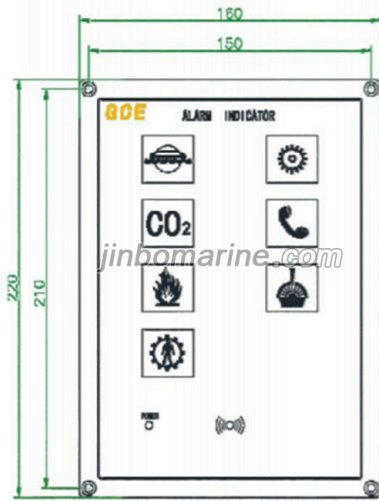
## Embedded Alarm Indicator GCBJDZ-01-SGF-7AQ

ISO9001 Supplier

Class Certificate

Export Supply

Embedded Alarm Indicator GCBJDZ-01-SGF-7AQ Function The alarm indicator is installed on the flag console for replaying general alarms, engine telegraph signals, telephone calls, host failures,...



### Key Highlights

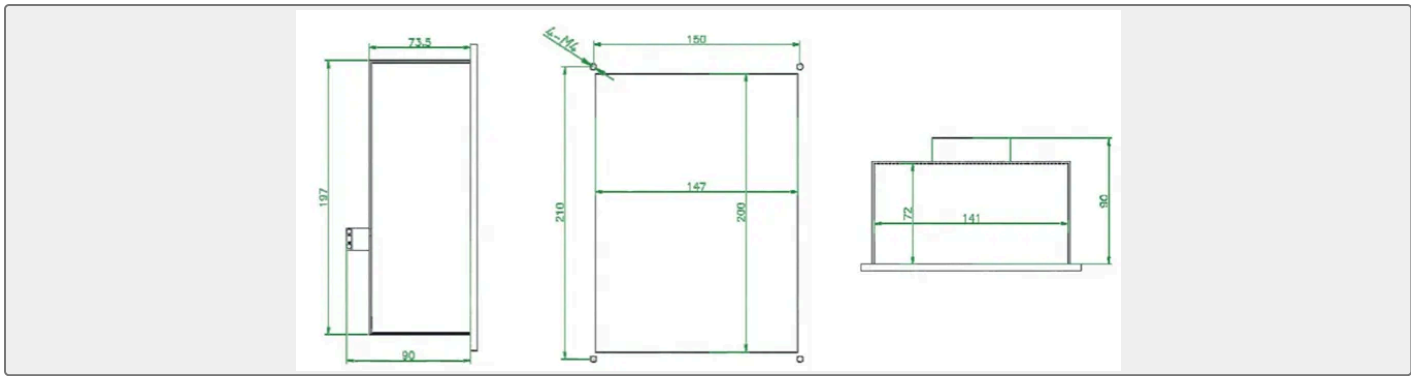
Category	Marine Engine Telegraph System
Standard	CB
Weight / Size	IP20Weight:
Certificate	ABS, LR, BV, DNVGL, NK, KR, IRS, RMRS, CCS

We can supply according to your requirement, drawings, class certificate needs, and delivery schedule.

### Technical Specifications

Category	Marine Engine Telegraph System	Model / SKU	Embedded-Alarm-Indicator-GCBJDZ-01-SGF-7AQ
Standard	CB	Weight / Size	IP20Weight:
Certificate	ABS, LR, BV, DNVGL, NK, KR, IRS, RMRS, CCS	Warranty	12 Months unless specified otherwise
Origin	China		

## Embedded Alarm Indicator GCBJDZ-01-SGF-7AQ



## Function

The alarm indicator is installed on the flag console for replaying general alarms, engine telegraph signals, telephone calls, host failures, CO<sub>2</sub> alarms and fire alarms, personnel alarms, and facilitating prompt action by personnel on duty.

## Technical Parameters

Working voltage: AC220V ±10% Maximum power consumption: 5W Identification signal:

General alarm, engine telegraph signal, telephone call, host failure, CO<sub>2</sub> alarm and fire alarm, personnel alarm

Communication method: serial communication Alarm signal loudness: 70dB-90dB

Colour: Black

Protection level : IP20 Weight: 1.0Kg

Power: 4w