


**MARINE FENDER**

# Inflatable Rubber Fender

Product Specification Inflatable fender consist of 3 main layers: Inner Rubber, Reinforced Tyre Cord and Outer Rubber. The above components are mould-vulcanized as one body under high pressure after they have been ...

- ISO9001 Supplier
- Class Certificate
- Export Supply



Key Highlights	
<b>Category</b>	Marine Fender
<b>Standard</b>	EN
<b>Material</b>	Rubber
<b>Weight / Size</b>	3.It can be widely used and it will be suitable to any size of the ship o...
<b>Certificate</b>	CCS,ABS,DNV,BV,RINA,LR,mi ll certificate etc.
We can supply according to your requirement, drawings, class certificate needs, and delivery schedule.	

## Technical Specifications

<b>Category</b>	Marine Fender	<b>Model / SKU</b>	Inflatable-Rubber-Fender
<b>Standard</b>	EN	<b>Material</b>	Rubber
<b>Weight / Size</b>	3.It can be widely used and it will be suitable to any size of the ship or wharf.	<b>Certificate</b>	CCS,ABS,DNV,BV,RINA,LR,mill certificate etc.
<b>Warranty</b>	12 Months unless specified otherwise	<b>Origin</b>	China

<b>CONTENTS</b>	<ul style="list-style-type: none"> <li>■ Product Specification</li> <li>■ Structure Of Inflatable Rubber Fender</li> </ul>	<ul style="list-style-type: none"> <li>■ Feature</li> <li>■ Size Chart</li> </ul>
-----------------	--	---

## Product Specification

Inflatable fender consist of 3 main layers: Inner Rubber, Reinforced Tyre Cord and Outer Rubber. The above components are mould-vulcanized as one body under high pressure after they have been assembled. End flanges are at both end for convenience of air charge and other purposes.

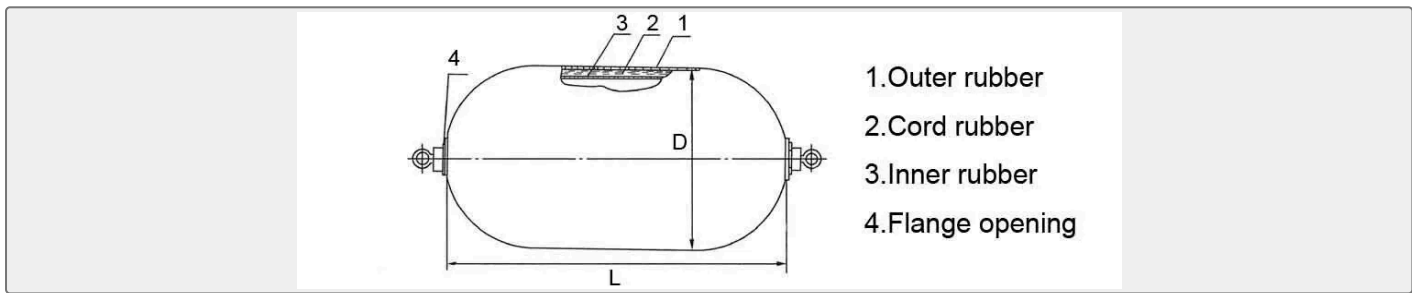


Marine fender have tyre network type, rubber network type and cord network type. We normally recommend fenders with a chain and tyre net for protection of the fender body (tyre network type), of course they can also be delivered without one.

## Feature

1. high absorption of energy.
2. easy to be install and maintenance due to simple shape.
3. It can be widely used and it will be suitable to any size of the ship or wharf.
4. It can be absorbed most of the impact energy of pitching and rolling when ship alongside.
5. low pressure of unit area acting on ship.
6. excellent impact fatigue resistance.

## Structure Of Inflatable Rubber Fender



## Size Chart

Specifications (mm)		At 60% compression;		Fender Body Weight
		Initial Pressure is 0.05MPa		±10%
Diameter	Length	Energy Absorption	Reaction Force	KG
		(KJ)	(KN)	
200	500	2	25	6
300	500	3	32	12
500	1000	6	64	25
600	1200	10	86	35
700	1500	17	137	50
1000	1500	32	181	80
1000	2000	45	257	100



1200	2000	63	297	120
1350	2500	100	426	170
1500	3000	153	579	320
1700	3000	190	637	400
2000	3500	308	875	590
2500	4000	663	1380	1000
2500	5500	932	2010	1400
3000	5000	1050	2030	1800
3000	6000	1315	2488	2200
3300	6500	1814	3015	2700
3500	6000	2018	3286	2800
3500	6500	2325	3656	3200
3500	7000	2650	4018	3600
3600	7200	3180	4821	4320

Other sizes besides the above also can be customized.

Initial pressure: both 0.05MPa and 0.08MPa available.