

# Jinbo Marine

Marine &amp; Offshore Equipment Datasheet

PRODUCT DATASHEET

## CHAIN CHASER

## J Chain Chaser

J Chain Chasers is a tool for recovering embedded anchors deployed by the buoy and pennant method when the pennant has broken and the buoy drifted away. The material of the chaser is not hard as the material of the...

ISO9001 Supplier

Class Certificate

Export Supply



### Key Highlights

Category	Chain Chaser
Standard	EN
Material	Casting Steel
Weight / Size	It will handle anchors to 30 tones in weight and stud link chain up to 4...
Certificate	ABS, LR

We can supply according to your requirement, drawings, class certificate needs, and delivery schedule.

### Technical Specifications

Category	Chain Chaser	Model / SKU	J-Chain-Chaser
Standard	EN	Material	Casting Steel
Weight / Size	It will handle anchors to 30 tones in weight and stud link chain up to 4-1/2 inches diameter.	Certificate	ABS, LR
Warranty	12 Months unless specified otherwise	Origin	China

#### CONTENTS

- China J Chain Chaser:
- J Type Chain Chasers Specification
- Feature:
- SWL 250 Ton, Proof Load 320Ton J Chain Chaser Hook

### China J Chain Chaser:

J Chain Chasers is a tool for recovering embedded anchors deployed by the buoy and pennant method when the pennant has broken and the buoy drifted away.



The material of the chaser is not hard as the material of the wire and chain. This means that wear is taken by the chaser without damage to the chain and wire.

### Feature:

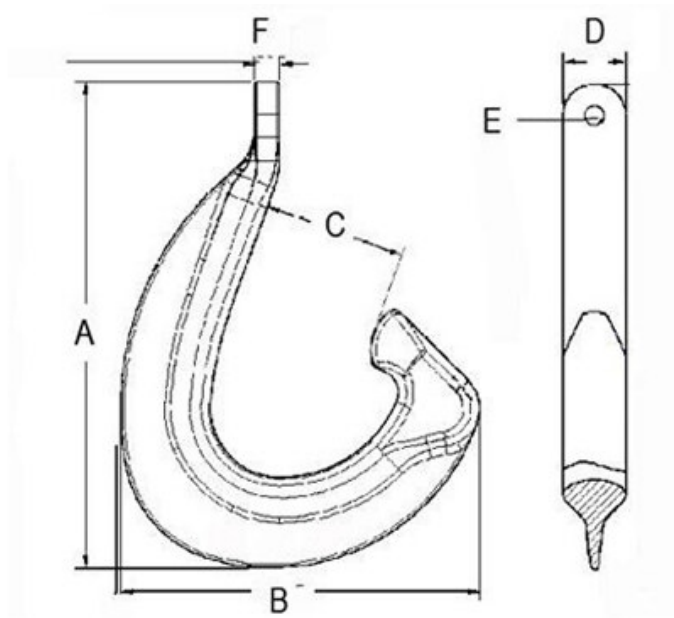
1. Excellent quality and competitive price .
2. Durable, long lifetime.
3. Standard or customerized.

It is attached by a work wire to the winch of the anchor handling tug and at approximately 1/3 of the water depth. After "snagging" the anchor chain, is towed into contact with the anchor shank and flukes enabling the tug to lift and board the anchor.

It will handle anchors to 30 tones in weight and stud link chain up to 4-1/2 inches diameter.

Technical drawing and picture will be offered.

### J Type Chain Chasers Specification



J CHAIN CHASER								
PullLoad	SWL	Dimensions						Weight
(Ton)	(Ton)	A	B	C	D	E	F	(kgs)
200	110	2459	1830	715	332	128	100	1885
400	250	2565	1923	699	457	191	165	2650

Customized Size can be supplied.



# SWL 250 Ton, Proof Load 320Ton J Chain Chaser Hook

