

Jinbo Marine

Marine & Offshore Equipment Datasheet

PRODUCT DATASHEET

MARINE FAIRLEAD

JIS F2026-1980 A Type Marine Roller Fairlead

ISO9001 Supplier

Class Certificate

Export Supply

JIS F2026-1980 A type Marine roller fairlead and FA4 series marine fairlead is vey popular type. Feature: 1.Good wear and corrosion resistance. 3.Durable, long lifetime. 3.Provide CCS , BV , LR...



Key Highlights

Category	Marine Fairlead
Standard	JIS
Material	ZG230-450,Q235 or as per your request.
Weight / Size	size chart:
Certificate	ABS , BV, CCS, mill certificate etc.

We can supply according to your requirement, drawings, class certificate needs, and delivery schedule.

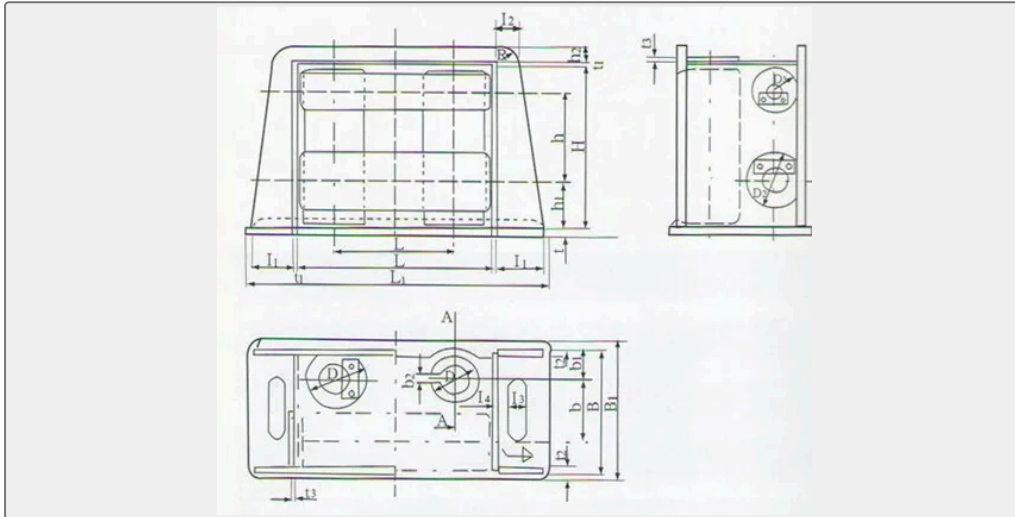
Technical Specifications

Category	Marine Fairlead	Model / SKU	JIS-F2026-1980-A-Type-Marine-Roller-Fairlead
Standard	JIS	Material	ZG230-450,Q235 or as per your request.
Weight / Size	size chart:	Surface	5.Surface:
Certificate	ABS , BV, CCS, mill certificate etc.	Warranty	12 Months unless specified otherwise
Origin	China		



CONTENTS

- JIS F2026-1980 A type Marine roller fairlead and FA4 series marine fairlead is vey popular type.
- size chart: Nominal dia Frame B B1 b b1 b2 D D1 D2 H h h1 h2 L L1 l l1 l2 140 310 355 150 69 20 90 140 120 480 275 130 40 515 805 335 120 60 160 360 405 175 82 22 110 160 140 515 290 145 45 570 890 365 135 65 180 410 455 200 95 24 135 180 150 560 315 155 50 620 960 390 145 70 200 460 505 225 108 26 160 200 160 590 330 170 60 675 1049 420 160 80 250 565 610 280 133 30 200 250 200 715 415 195 75 825 1303 520 210 105 315 670 715 330 159 34 240 300 240 870 520 220 90 980 1562 620 260 130
- Feature:



JIS F2026-1980 A type Marine roller fairlead and FA4 series marine fairlead is vey popular type.

Feature:

- 1.Good wear and corrosion resistance.
- 3.Durable, long lifetime.
- 3.Provide CCS , BV , LR , BV etc Certificate.
- 4.Material:ZG230-450,Q235.
- 5.Surface: Blasting,Epoxy.
- 6.Customized service is available, Advanced equipment ,Strong consciousness in controlling quality.

We can supply roller fairlead, Fairleads with horizontal rollers according to JISF, DIN and GB standards . We can also make these products according to buyer's drawings.

size chart:

Nominal Frame

dia	B	B1	b	b1	b2	D	D1	D2	H	h	h1	h2	L	L1	l	l1	l2



140	310 355 150 69	20 90	140 120 480 275 130 40 515 805	335 120 60
160	360 405 175 82	22 110 160 140 515 290 145 45 570 890	365 135 65	
180	410 455 200 95	24 135 180 150 560 315 155 50 620 960	390 145 70	
200	460 505 225 108 26 160 200 160 590 330 170 60 675 1049 420 160 80			
250	565 610 280 133 30 200 250 200 715 415 195 75 825 1303 520 210 105			
315	670 715 330 159 34 240 300 240 870 520 220 90 980 1562 620 260 130			

