

SEWAGE TREATMENT PLANT

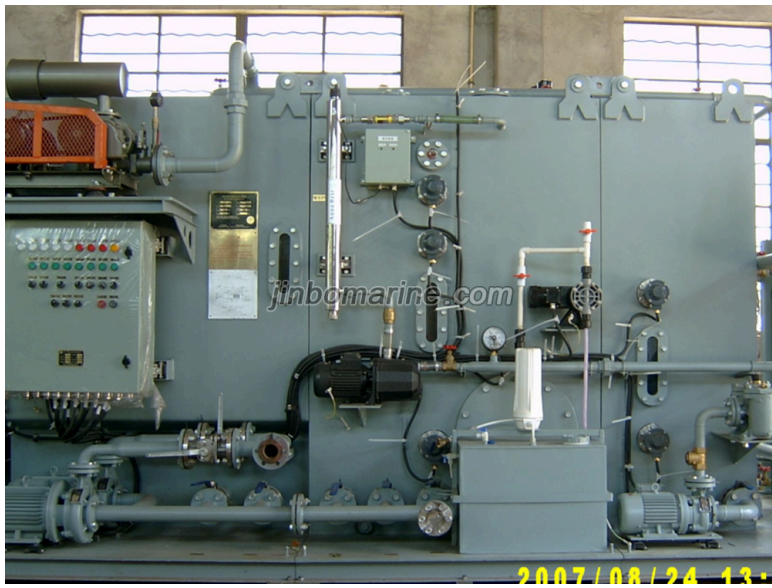
MBR-50 Marine Sewage Treatment Plant

ISO9001 Supplier

Class Certificate

Export Supply

MBR-50 Marine Sewage Treatment Plant : 1.Application and characteristics MBR series membrane biochemical process sewage treatment device is used to treat black water (domestic sewage) on ships to achieve ...



Key Highlights

Category	Sewage Treatment Plant
Standard	EN
Weight / Size	MBR series membrane biochemical waste water treatment device has the adv...
Certificate	ABS, LR, BV, DNVGL, NK, KR, IRS, RMRS, CCS

We can supply according to your requirement, drawings, class certificate needs, and delivery schedule.

Technical Specifications

Category	Sewage Treatment Plant	Model / SKU	MBR-50-Marine-Sewage-Treatment-Plant
Standard	EN	Weight / Size	MBR series membrane biochemical waste water treatment device has the advantages of small size, compact structure, light weight and high degree of automation,Low energy consumption;
Certificate	ABS, LR, BV, DNVGL, NK, KR, IRS, RMRS, CCS	Warranty	12 Months unless specified otherwise
Origin	China		

MBR-50 Marine Sewage Treatment Plant :

1.Application and characteristics



MBR series membrane biochemical process sewage treatment device is used to treat black water (domestic sewage) on ships to achieve

The requirements of IMO Convention shall be discharged outboard;

MBR series membrane biochemical waste water treatment device can meet the standard treatment of kitchen gray water;

MBR series membrane biochemical waste water treatment device has the advantages of small size, compact structure, light weight and high degree of automation, Low energy consumption;

Simple operation, use and maintenance, long service life;

MBR series membrane biochemical waste water treatment plant has reached IMO MEPC159 (55) and IMO MEPC227(64) convention which came into force in 2010 prescribed indicators

MBR series membrane biochemical waste water treatment plant has been awarded by CCS and US Coast Guard (USCG) and European Union (EC) type approval certificates.

2. Discharge index:

Solid suspended solids (SS)≤35mg/L

Biochemical oxygen demand (BOD5)≤35mg/L

Chemical oxygen demand (COD)≤125mg/L

Escherichia Coli ≤100 PCS/100ml

PH : 6~8.5

Water supply and drainage index

Water discharge head: 30m

Sewage discharge flow: 5m³/hour

3. Technical data:

Model	Applicable number of people	Capacity(L/D)	L mm	W mm	H mm	Power KW	Weight KG
MBR-20	20	1400	1500	1400	1600	6.2	1598
MBR-30	30	2100	1770	1500	1750	6.4	1651
MBR-40	40	2800	1960	1660	1900	6.7	1842
MBR-50	50	3500	2040	1660	1900	7	2385
MBR-60	60	4200	2170	1755	2000	7	2535
MBR-70	70	4900	2270	1880	2000	7.5	2698
MBR-80	80	5600	2400	1970	2000	7.5	2801
MBR-90	90	6300	2470	2060	2000	7.5	2829
MBR-100	100	7000	2560	2150	2000	7.2	2968
MBR-120	120	8400	2740	2310	2000	7	0.087073s

MBR-150	150	10500	3010	2550	2000	7.5	3645
MBR-200	200	14000	3550	2620	2100	8.4	3966
MBR-250	250	17500	3930	2830	2100	9.5	4474
MBR-300	300	21000	4360	2850	2200	9.5	5143
MBR-350	350	24500	4530	3100	2200	10	5642
MBR-400	400	28000	4900	3250	2200	14	6121
MBR-500	500	35000	5500	3500	2200	14	6907