

SPRING TOWING HOOK

Manual Release Spring Towing Hook

 The towing hook enable ships to be towed in safety under all kinds of working conditions,it can be released manually. Certificate with CCS, BV, ABS , DNV ,GL , mill certificate etc. ...

ISO9001 Supplier

Class Certificate

Export Supply



Key Highlights

Category	Spring Towing Hook
Standard	DIN
Material	Including Q235-A material,35# steel,35 Crmo, 60Si2Mn. Can use your assig...
Weight / Size	Size chart:
Certificate	CCS, BV, ABS , GL , mill certificate etc.

We can supply according to your requirement, drawings, class certificate needs, and delivery schedule.

Technical Specifications

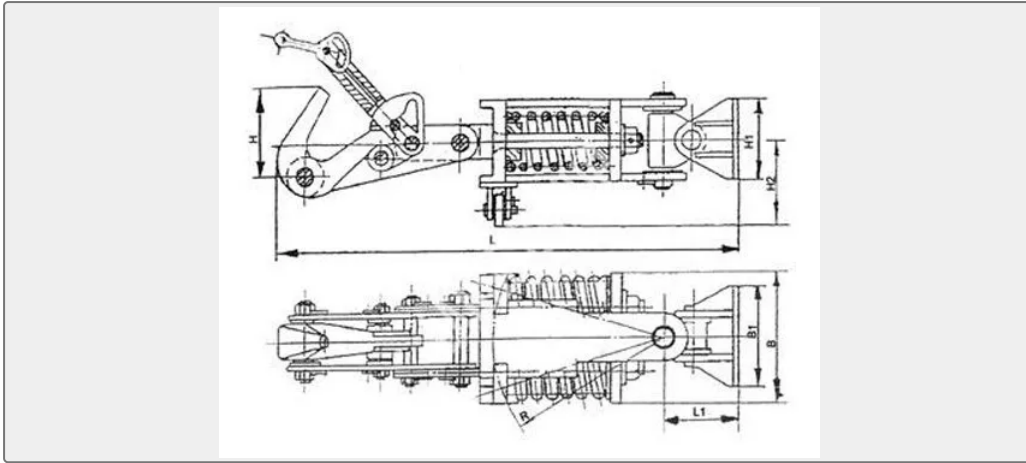
Category	Spring Towing Hook	Model / SKU	Manual-Release-Spring-Towing-Hook
Standard	DIN	Material	Including Q235-A material,35# steel,35 Crmo, 60Si2Mn. Can use your assigned material too.
Weight / Size	Size chart:	Certificate	CCS, BV, ABS , GL , mill certificate etc.
Warranty	12 Months unless specified otherwise	Origin	China

CONTENTS

- China Manual Release Spring Towing Hook:
- Warranty:
- Size chart:



China Manual Release Spring Towing Hook:



The **towing hook** enable ships to be towed in safety under all kinds of working conditions,it can be released manually.

Certificate with CCS, BV, ABS , DNV ,GL , mill certificate etc.

Popular model:5 ton,8 ton,10 ton,11 ton,12 ton,16 ton,25 ton,30 ton,40 ton

Type: manual spring Type/Hydraulic spring type.

Operation mode: Side movement

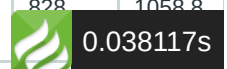
Material:Including Q235-A material,35# steel,35 Crmo, 60Si2Mn.

Manual release spring towing hook also be called as Hydraulic r

lease spring towing hook, manual spring towing hook,hand operated towing hook.

Size chart:

Manual release spring towing hook										
Product No.	Max.load(KN)	L(mm)	L1(mm)	B(mm)	B1(mm)	H(mm)	H1(mm)	H2(mm)	R(mm)	Weight (KG)
MSH-001	16	822	145	232	150	180	150	157	309	56.6
MSH-002	25	916	142	260	130	190	130	141	345	83.7
MSH-003	40	1180	184	330	208	270	228	189.5	445	177.9
MSH-004	63	1411	196	342	200	284	160	192	563	267.9
MSH-005	100	1710	253	410	260	376	250	256.5	684	558.1
MSH-006	160	1936	270	458	320	400	210	261	741	646.9
MSH-007	220	2448	324	560	310	490	300	310	952	1269.1
MSH-008	320	2128	315	590	342	430	280	332	828	1058.8



MSH-009	400	2259	330	640	320	472	300	355	880	1340.1
---------	-----	------	-----	-----	-----	-----	-----	-----	-----	--------

Warranty:

We undertake to amend any defectives parts caused by poor design, material or workmanship for the goods supplied.

Warranty period: within a period of 12 months from date of invoice.