

Jinbo Marine

Marine & Offshore Equipment Datasheet

PRODUCT DATASHEET

GB MARINE CHECK VALVE

Marine Cast Iron Lift Check Valve GB/T592-93 Type A/AS

ISO9001 Supplier

Class Certificate

Export Supply

Marine Lift Check Valve also can be called marine non-return valve. Design Standard: GB/T592-93, CBM1089-81 Test Standard: GB600 Flange size as per GB569,GB2501 Nominal Pre...



Key Highlights

| | |
|---------------|---|
| Category | GB Marine Check Valve |
| Standard | GB |
| Material | Cast Iron |
| Weight / Size | GB600 Flange size as per GB569,GB2501 Nominal Pressure(Mpa) Nominal Diam... |
| Certificate | CCS, BV, ABS, GL, LR, DNV, NK,RINA, KR,IRS |

We can supply according to your requirement, drawings, class certificate needs, and delivery schedule.

Technical Specifications

| | | | |
|---------------|---|-------------|--|
| Category | GB Marine Check Valve | Model / SKU | Marine-Cast-Iron-Lift-Check-Valve-GB-T592-93-Type-A-AS |
| Standard | GB | Material | Cast Iron |
| Weight / Size | GB600 Flange size as per GB569,GB2501 Nominal Pressure(Mpa) Nominal Diameter(mm) Applicable Medium 0.6 50~150 sea water, fresh water, lubrication oil, fuel oil, steam not over 220°C 1.0 65~150 1.6 20~50 Main Material: | Certificate | CCS, BV, ABS, GL, LR, DNV, NK,RINA, KR,IRS |
| Warranty | 12 Months unless specified otherwise | Origin | China |

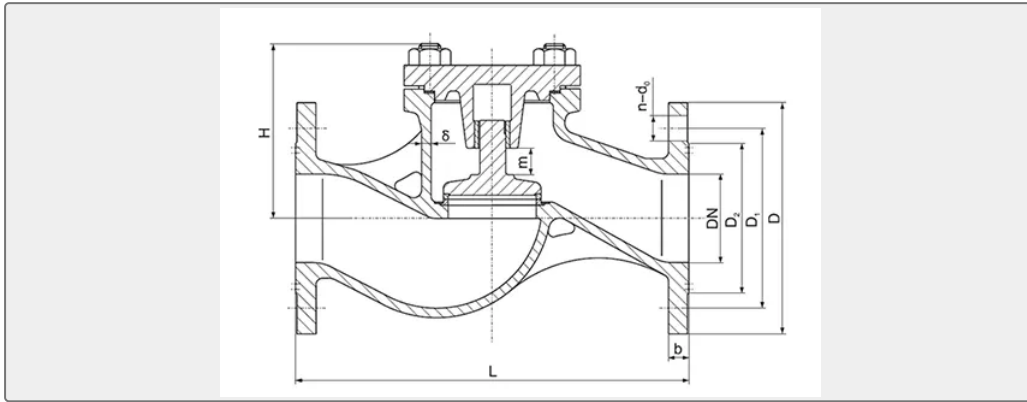


0.054279s

CONTENTS

- China Marine Cast Iron Lift Check Valve GB/T592-93
- Main Material:
- Type A/AS:
- Main Size List(mm):

China Marine Cast Iron Lift Check Valve GB/T592-93 Type A/AS:



Marine Lift Check Valve also can be called marine non-return valve.

Design Standard: GB/T592-93, CBM1089-81

Test Standard: GB600

Flange size as per GB569,GB2501

| Nominal Pressure(Mpa) | Nominal Diameter(mm) | Applicable Medium |
|-----------------------|----------------------|---|
| 0.6 | 50~150 | sea water, fresh water, lubrication oil, fuel oil, steam not over 220°C |
| 1.0 | 65~150 | |
| 1.6 | 20~50 | |

Main Material:

Body-Cast Iron(HT200)

Bonnet-Cast Iron(HT200)

Disc-Bronze(ZCuSn5Pb5Zn5)

Seat-Bronze(ZCuAl9Mn2)

Main Size List(mm):

Type A:

| PN (MPa) | DN (mm) | Structure Dimension | | | Thickness δ | Flange | | | | | Bolt | | Lift Range m | Weight(kg) |
|----------|---------|---------------------|-----|-----|-------------|--------|-----|-----|----|----|------|-----|-----------------|------------|
| | | L | H≈ | H1 | | D | D1 | D2 | d0 | b | n | Th | | |
| 1.0 | 65 | 290 | 130 | 115 | 9 | 155 | 123 | 104 | 15 | 15 | 6 | M14 | 19 | 15.1 |
| | 80 | 310 | 151 | 125 | 9 | 170 | 138 | 118 | 15 | 15 | 8 | M14 | 23 | 18.3 |



| | | | | | | | | | | | | | | |
|-----|-----|-----|-----|-----|----|-----|-----|-----|----|----|----|-----|----|------|
| 1.6 | 100 | 350 | 171 | 135 | 10 | 190 | 158 | 138 | 15 | 15 | 8 | M14 | 28 | 24.8 |
| | 125 | 400 | 189 | 155 | 10 | 215 | 183 | 164 | 15 | 15 | 10 | M14 | 35 | 34.7 |
| | 150 | 480 | 219 | 160 | 11 | 240 | 208 | 190 | 15 | 16 | 12 | M14 | 42 | 48.4 |
| | 20 | 150 | 87 | 75 | 7 | 95 | 68 | 48 | 13 | 14 | 4 | M12 | 7 | 4.3 |
| | 25 | 160 | 89 | 80 | 7 | 105 | 73 | 56 | 13 | 14 | 4 | M12 | 7 | 4.4 |
| | 32 | 180 | 93 | 85 | 7 | 115 | 83 | 64 | 15 | 15 | 6 | M14 | 9 | 5.3 |
| | 40 | 200 | 105 | 90 | 8 | 125 | 93 | 74 | 15 | 16 | 6 | M14 | 12 | 7.3 |
| | 50 | 230 | 117 | 95 | 8 | 135 | 103 | 84 | 15 | 16 | 8 | M14 | 15 | 8.9 |

Type AS:

| PN (MPa) | DN (mm) | Structure Dimension | | Thickness δ | Flange | | | | | Bolt | | Lift Range m | Weight(kg) |
|----------|---------|---------------------|-------------|--------------------|--------|-----|-----|----|----|------|-----|-----------------|------------|
| | | L | H \approx | | D | D1 | D2 | d0 | b | n | Th | | |
| 0.6 | 50 | 230 | 117 | 8 | 140 | 110 | 90 | 14 | 16 | 4 | M12 | 15 | 9.4 |
| | 65 | 290 | 130 | 9 | 160 | 130 | 110 | 14 | 16 | 4 | M12 | 19 | 15.5 |
| | 80 | 310 | 151 | 9 | 190 | 150 | 128 | 18 | 18 | 4 | M16 | 23 | 19.2 |
| | 100 | 350 | 171 | 10 | 210 | 170 | 148 | 18 | 18 | 4 | M16 | 28 | 28.6 |
| | 125 | 400 | 189 | 10 | 240 | 200 | 178 | 18 | 20 | 8 | M16 | 35 | 38.2 |
| | 150 | 480 | 219 | 11 | 265 | 225 | 202 | 18 | 20 | 8 | M16 | 42 | 52.0 |
| 1.0 | 65 | 290 | 130 | 9 | 185 | 145 | 122 | 18 | 20 | 4 | M16 | 19 | 18.1 |
| | 80 | 310 | 151 | 9 | 200 | 160 | 133 | 18 | 22 | 8 | M16 | 23 | 21.6 |
| | 100 | 350 | 171 | 10 | 220 | 180 | 158 | 18 | 24 | 8 | M16 | 28 | 29.2 |
| | 125 | 400 | 189 | 10 | 250 | 210 | 184 | 18 | 26 | 8 | M16 | 35 | 40.2 |
| | 150 | 480 | 219 | 11 | 285 | 240 | 212 | 22 | 26 | 8 | M20 | 42 | 56.4 |
| 1.6 | 20 | 150 | 87 | 7 | 105 | 75 | 58 | 14 | 16 | 4 | M12 | 7 | 4.8 |
| | 25 | 160 | 89 | 7 | 115 | 85 | 68 | 14 | 16 | 4 | M12 | 7 | 5.1 |
| | 32 | 180 | 93 | 7 | 140 | 100 | 78 | 18 | 18 | 4 | M16 | 9 | 7.1 |
| | 40 | 200 | 105 | 8 | 150 | 110 | 88 | 18 | 18 | 4 | M16 | 12 | 9.3 |
| | 50 | 230 | 117 | 8 | 165 | 125 | 102 | 18 | 20 | 4 | M16 | 15 | 11.4 |