

Jinbo Marine

Marine & Offshore Equipment Datasheet

PRODUCT DATASHEET

VORTEX PUMP

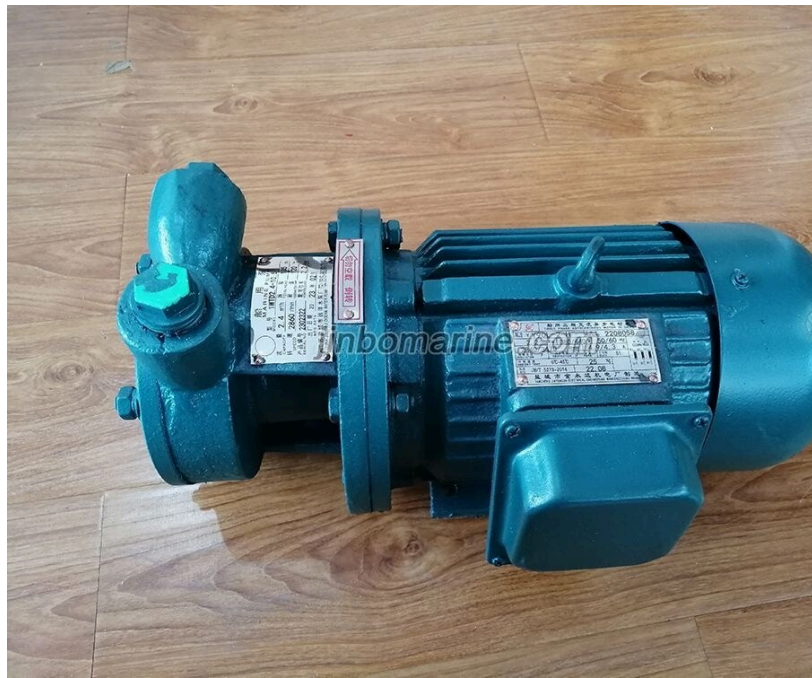
Marine Single-stage Whirlpool pump 1WTD2.4-10.5

ISO9001 Supplier

Class Certificate

Export Supply

Description: WTD series coaxial mechanical sealed single stage vortex pump is our latest design of the replacement products. It is characterized by the pump and motor coaxial, using hard alloy mechanical ...



Key Highlights

Category	Vortex Pump
Standard	EN
Material	It is characterized by the pump and motor coaxial, using hard alloy mech...
Weight / Size	It is characterized by the pump and motor coaxial, using hard alloy mech...
Certificate	ABS, LR, BV, DNVGL, NK, KR, IRS, RMRS, CCS

We can supply according to your requirement, drawings, class certificate needs, and delivery schedule.



Technical Specifications			
Category	Vortex Pump	Model / SKU	Marine-Single-stage-Whirlpool-pump-1WTD2-4-10-5
Standard	EN	Material	It is characterized by the pump and motor coaxial, using hard alloy mechanical seal, stainless steel shaft, tin bronze impeller, with light weight, small volume, low noise, high pump efficiency, long life, easy maintenance and other advantages.
Weight / Size	It is characterized by the pump and motor coaxial, using hard alloy mechanical seal, stainless steel shaft, tin bronze impeller, with light weight, small volume, low noise, high pump efficiency, long life, easy maintenance and other advantages.	Certificate	ABS, LR, BV, DNVGL, NK, KR, IRS, RMRS, CCS
Warranty	12 Months unless specified otherwise	Origin	China

CONTENTS

- Description:

- Technical data:

Description:

WTD series coaxial mechanical sealed single stage vortex pump is our latest design of the replacement products. It is characterized by the pump and motor coaxial, using hard alloy mechanical seal, stainless steel shaft, tin bronze impeller, with light weight, small volume, low noise, high pump efficiency, long life, easy maintenance and other advantages. It is the ideal product for Marine industry, boiler water supply, cooling, washing, water lubrication and other small flow, high head water supply device water temperature does not exceed 80°C.

Technical data:

Model	Flow m ³ /h	Head m	Motor Power kw	Speed r/min	Inlet/Outlet(DN)	Efficiency
3/4WTD0.7-10.5	0.7	105	1.5	2860	3/4"	13
1WTD2.4-10.5	2.4	105	2.2	2860	1"	29
1WTD2.5-12	2.5	120	3	2860	1"	31

