

Jinbo Marine

Marine & Offshore Equipment Datasheet

PRODUCT DATASHEET

MARINE LOUVER

Marine Steel Watertight Louvre with G4 Filter

ISO9001 Supplier

Class Certificate

Export Supply

Marine Steel Watertight Louvre with G4 Filter Standard: CB/T749-1997 It has the advantage of watertight/weathertight, radiation proof, insect prevention, ventilation, used for wheel house, store room and toile...



Key Highlights

Category	Marine Louver
Standard	CB
Material	Steel
Certificate	ABS, LR, BV, DNVGL, NK, KR, IRS, RMRS, CCS

We can supply according to your requirement, drawings, class certificate needs, and delivery schedule.

Technical Specifications

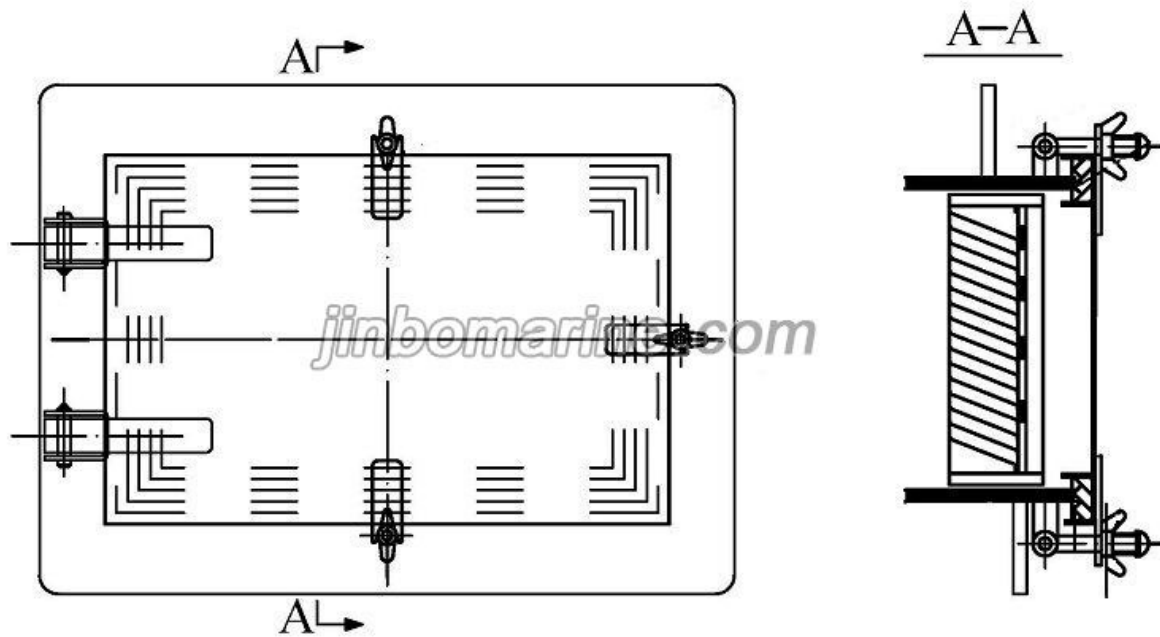
Category	Marine Louver	Model / SKU	Marine-Steel-Watertight-Louvre-with-G4-Filter
Standard	CB	Material	Steel
Certificate	ABS, LR, BV, DNVGL, NK, KR, IRS, RMRS, CCS	Warranty	12 Months unless specified otherwise
Origin	China		

CONTENTS

- China Marine Steel Watertight Louvre with G4 Filter:
- Main Parts and Material:



Marine Steel Watertight Louvre with G4 Filter Drawing



China Marine Steel Watertight Louvre with G4 Filter:

Marine Steel Watertight Louvre with G4 Filter

Standard: CB/T749-1997

It has the advantage of watertight/weathertight, radiation proof, insect prevention, ventilation, used for wheel house, store room and toilet on the ship.

Main Parts and Material:

- 1-Cover: carbon steel
- 2-Packing:Rubber
- 3-Window Frame: carbon steel
- 4-Window Seat: Carbon Steel
- 5-Fixed eye plate: steel
- 6-Insect prevention screen: SUS/steel screen
- 7-Mouse prevention screen:SUS/ steel screen
- 8-Blade: carbon steel, carbon steel with hot dip galv or stainless steel
- 9-Eye Plate: carbon steel
- 10-Bolt: Brass/SUS/Carbon Steel
- 11-Nut: Brass/SUS/Carbon steel
- 12-Spring gasket: SUS/steel
- 13-Hinge: Brass/stainless steel/Carbon Steel
- 14-Clip:Brass/stainless steel/carbon steel



15-Hook: steel

16-Handle: Steel