

Jinbo Marine

Marine & Offshore Equipment Datasheet

PRODUCT DATASHEET

SPRING TOWING HOOK

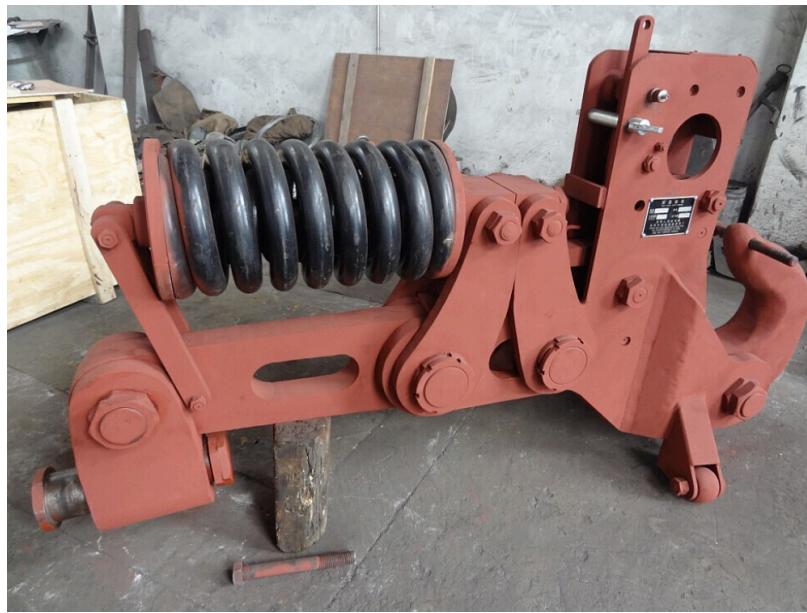
Pneumatic Control Spring Towing Hook

ISO9001 Supplier

Class Certificate

Export Supply

It is use for towing with steel, nylon or polypropylene ropes. it can be released manually or from the wheel house by pulling the release wire or by pushing a button. Remote control systems can be supplied...



Key Highlights

Category	Spring Towing Hook
Standard	DIN
Material	Including Q235-A material, 35# steel, 35 Crmo, 60Si2Mn. The goods can be de...
Weight / Size	Size chart:
Certificate	Certificate with CCS, BV, ABS, GL, mill certificate etc.

We can supply according to your requirement, drawings, class certificate needs, and delivery schedule.

Technical Specifications

Category	Spring Towing Hook	Model / SKU	Pneumatic-Control-Spring-Towing-Hook
Standard	DIN	Material	Including Q235-A material, 35# steel, 35 Crmo, 60Si2Mn. The goods can be designed according to your requirements.
Weight / Size	Size chart:	Certificate	Certificate with CCS, BV, ABS, GL, mill certificate etc.
Warranty	12 Months unless specified otherwise	Origin	China

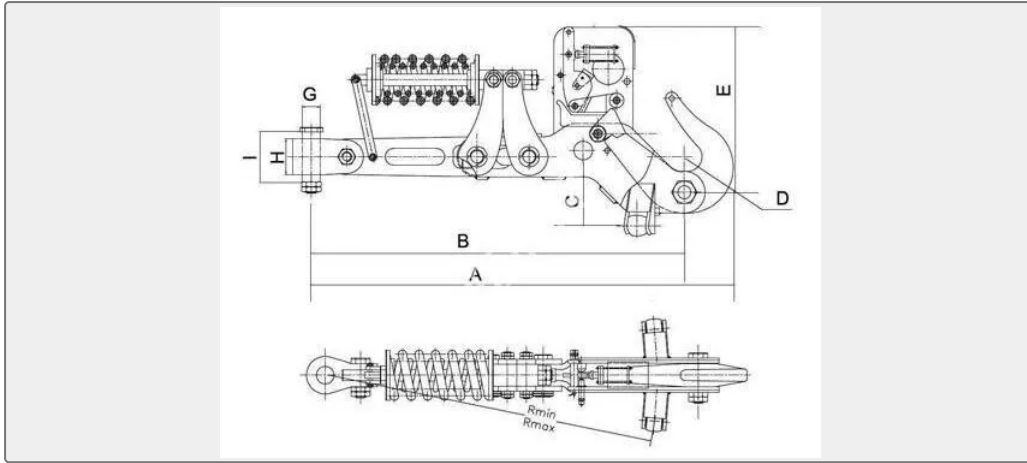
CONTENTS

- China Pneumatic Control Spring Towing Hook:

- Size chart:



China Pneumatic Control Spring Towing Hook:



It is use for towing with steel,nylon or polypropylene ropes. it can be released manually or from the wheel house by pulling the release wire or by pushing a button. Remote control systems can be supplied with either a hydraulic or pneumatic release mechanism.

Popular model:5 ton,8 ton,10 ton,11 ton,12 ton,16 ton,25 ton,30 ton,40 ton

Type:Pneumatic control spring Type,air control spring type.

Operation mode: Side movement

Material:Including Q235-A material,35# steel,35 Crmo, 60Si2Mn.

Certificate with CCS, BV, ABS , DNV ,GL , mill certificate etc.

Size chart:

Product No.	Max Towing power(ton)	Main Size(mm)					Weight (KG)	Connection Size(mm)			Action Radius(mm)		Cylinder Air Pressure
		A	B	C	D	E		G	H	I	Max R	Min R	
PSH-001	20	1830	1630	340	R50	614	342	70	150	210	1475	1400	6--8
PSH-002	30	2015	1780	384	R70	805	595	85	170	240	1805	1690	
PSH-003	40	1935	1655	404	R75	830	697	90	190	260	1590	1490	
PSH-004	60	2270	1906	485	R90	940	1234	110	240	340	1845	1740	