

Jinbo Marine

Marine & Offshore Equipment Datasheet


PRODUCT DATASHEET

EYE BOLTS & NUTS

RE Gular Nut Eye Bolt G-290, SS304 OR SS316

- ISO9001 Supplier
- Class Certificate
- Export Supply

SHANKDUA.& LENGTH (in.) WORKING LOADLIMIT (lbs.) WEIGHT PER 100 (lbs.) DIMENSIONS (in.) A B C ...

	Key Highlights	
	Category	Eye Bolts & Nuts
	Standard	EN
	Material	Stainless steel
	Weight / Size	SHANKDUA.& LENGTH (in.) WORKING LOADLIMIT (lbs.) WEIGHT PER 100 (lbs.) D...
Certificate	ABS, LR, BV, DNVGL, NK, KR, IRS, RMRS, CCS	
<p>We can supply according to your requirement, drawings, class certificate needs, and delivery schedule.</p>		

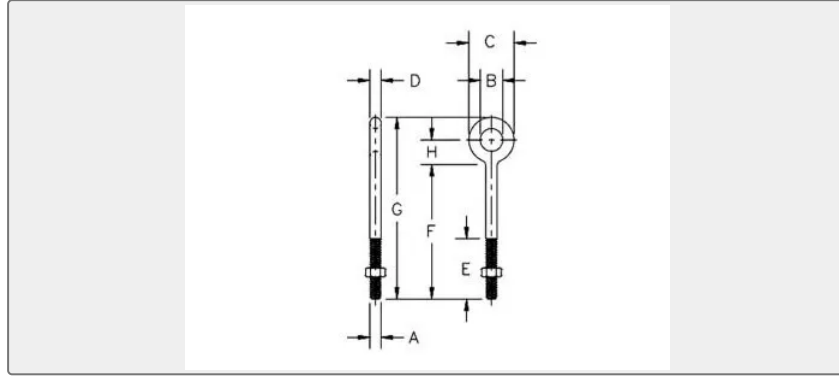
Technical Specifications

Category	Eye Bolts & Nuts	Model / SKU	RE-GULAR-NUT-EYE-BOLT-G-290-SS304-OR-SS316
Standard	EN	Material	Stainless steel

Weight / Size	SHANKDUA.& LENGTH (in.) WORKING LOADLIMIT (lbs.) WEIGHT PER 100 (lbs.) DIMENSIONS (in.) A B C D E F G	Certificate	ABS, LR, BV, DNVGL, NK, KR, IRS, RMRS, CCS
	H 1/4x2 650 8.2 0.25 0.5 1 0.25		
	1.5 2 3.06 0.56 1/4x4 650 11.7		
	0.25 0.5 1 0.25 2.5 4 5.06 0.56		
	5/16x2-1/4 1200 13.3 0.31 0.62		
	1.25 0.31 1.5 2.25 3.56 0.69		
	5/16x4-1/4 1200 25 0.31 0.62 1.25		
	0.31 2.5 4.25 5.56 0.69 3/8 x 2-1/2		
	1550 23.3 0.38 0.75 1.5 0.38 1.5		
	2.5 4.12 0.88 3/8 x 4-1/2 1550		
	29.5 0.38 0.75 1.5 0.38 2.5 4.5		
	6.12 0.88 3/8x6 1550 35.2 0.38		
	0.75 1.5 0.38 2.5 6 7.62 0.88 1/2 x		
	3-1/4 2600 50.3 0.5 1 2 0.5 1.5		
	3.25 5.38 1.12 1/2x6 2600 66.1		
	0.5 1 2 0.5 3 6 8.12 1.12 1/2x8		
	2600 82 0.5 1 2 0.5 3 8 10.12 1.12		
	1/2x10 2600 88 0.5 1 2 0.5 3 10		
	12.12 1.12 1/2x12 2600 114.2 0.5		
	1 2 0.5 3 12 14.12 1.12 5/8x4		
	5200 103.1 0.62 1.25 2.5 0.62 2 4		
	6.69 1.44 5/8x6 5200 118.2 0.62		
	1.25 2.5 0.62 3 6 8.69 1.44 5/8x8		
	5200 135.1 0.62 1.25 2.5 0.62 3 8		
	10.69 1.44 5/8x10 5200 153.6		
	0.62 1.25 2.5 0.62 3 10 12.69 1.44		
	5/8x12 5200 167.1 0.62 1.25 2.5		
	0.62 4 12 14.69 1.44 3/4 x 4-1/2		
	7200 168.6 0.75 1.5 3 0.75 2 4.5		
	7.69 1.69 3/4x6 7200 184.5 0.75		
	1.5 3 0.75 3 6 9.19 1.69 3/4x8		
	7200 207.9 0.75 1.5 3 0.75 3 8		
	11.19 1.69 3/4x10 7200 235 0.75		
	1.5 3 0.75 3 10 13.19 1.69 3/4x12		
	7200 257.5 0.75 1.5 3 0.75 4 12		
	15.19 1.69 3/4x15 7200 298 0.75		
	1.5 3 0.75 5 15 18.19 1.69 7/8x5		
	10600 270 0.88 1.75 3.5 0.88 2.5		
	5 8.75 2 7/8x8 10600 308 0.88		
	1.75 3.5 0.88 4 8 11.75 2 7/8x12		
	10600 400 0.88 1.75 3.5 0.88 4 12		
	15.75 2 1x6 13300 421 1 2 4 1 3 6		
	10.31 2.31 1x9 13300 468.5 1 2 4		
	1 4 9 13.31 2.31 1 x 12 13300 540		
	1 2 4 1 4 12 16.31 2.31 1 x 18		
	13300 650 1 2 4 1 7 18 21.31 2.31		
	1-1/4x8 21000 750 1.25 2.5 5 125		
	4 8 13.38 2.88 1-1/4x12 21000		

	900 1.25 2.5 5 1.25 4 12 17.38 2.88		
Warranty	12 Months unless specified otherwise	Origin	China

China RE Gular Nut Eye Bolt G-290, SS304 OR SS316:



SHANK DIA. & LENGTH (in.)	WORKING LOAD LIMIT (lbs.)	WEIGHT PER 100 (lbs.)	DIMENSIONS (in.)							
			A	B	C	D	E	F	G	H
1/4x2	650	8.2	0.25	0.5	1	0.25	1.5	2	3.06	0.56
1/4x4	650	11.7	0.25	0.5	1	0.25	2.5	4	5.06	0.56
5/16x2-1/4	1200	13.3	0.31	0.62	1.25	0.31	1.5	2.25	3.56	0.69
5/16x4-1/4	1200	25	0.31	0.62	1.25	0.31	2.5	4.25	5.56	0.69
3/8 x 2-1/2	1550	23.3	0.38	0.75	1.5	0.38	1.5	2.5	4.12	0.88
3/8 x 4-1/2	1550	29.5	0.38	0.75	1.5	0.38	2.5	4.5	6.12	0.88
3/8x6	1550	35.2	0.38	0.75	1.5	0.38	2.5	6	7.62	0.88
1/2 x 3-1/4	2600	50.3	0.5	1	2	0.5	1.5	3.25	5.38	1.12
1/2x6	2600	66.1	0.5	1	2	0.5	3	6	8.12	1.12
1/2x8	2600	82	0.5	1	2	0.5	3	8	10.12	1.12
1/2x10	2600	88	0.5	1	2	0.5	3	10	12.12	1.12
1/2x12	2600	114.2	0.5	1	2	0.5	3	12	14.12	1.12
5/8x4	5200	103.1	0.62	1.25	2.5	0.62	2	4	6.69	1.44
5/8x6	5200	118.2	0.62	1.25	2.5	0.62	3	6	8.69	1.44
5/8x8	5200	135.1	0.62	1.25	2.5	0.62	3	8	10.69	1.44
5/8x10	5200	153.6	0.62	1.25	2.5	0.62	3	10	12.69	1.44
5/8x12	5200	167.1	0.62	1.25	2.5	0.62	4	12	14.69	1.44
3/4 x 4-1/2	7200	168.6	0.75	1.5	3	0.75	2	4.5	7.69	1.69
3/4x6	7200	184.5	0.75	1.5	3	0.75	3	6	9.19	1.69

3/4x8	7200	207.9	0.75	1.5	3	0.75	3	8	11.19	1.69
3/4x10	7200	235	0.75	1.5	3	0.75	3	10	13.19	1.69
3/4x12	7200	257.5	0.75	1.5	3	0.75	4	12	15.19	1.69
3/4x15	7200	298	0.75	1.5	3	0.75	5	15	18.19	1.69
7/8x5	10600	270	0.88	1.75	3.5	0.88	2.5	5	8.75	2
7/8x8	10600	308	0.88	1.75	3.5	0.88	4	8	11.75	2
7/8x12	10600	400	0.88	1.75	3.5	0.88	4	12	15.75	2
1x6	13300	421	1	2	4	1	3	6	10.31	2.31
1x9	13300	468.5	1	2	4	1	4	9	13.31	2.31
1 x 12	13300	540	1	2	4	1	4	12	16.31	2.31
1 x 18	13300	650	1	2	4	1	7	18	21.31	2.31
1-1/4x8	21000	750	1.25	2.5	5	1.25	4	8	13.38	2.88
1-1/4x12	21000	900	1.25	2.5	5	1.25	4	12	17.38	2.88