

# Jinbo Marine

Marine &amp; Offshore Equipment Datasheet

PRODUCT DATASHEET

TURNBUCKLE

## Rigging Screw Body Stainless Steel

SIZE D1 L mm D2 mm M5 M5 80 8 M6 M6 95 ...

ISO9001 Supplier

Class Certificate

Export Supply



### Key Highlights

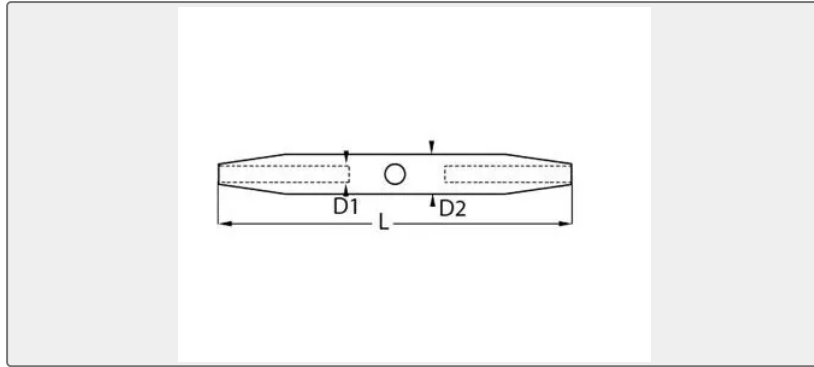
<b>Category</b>	Turnbuckle
<b>Material</b>	Stainless steel
<b>Weight / Size</b>	SIZE D1 L mm D2 mm M5 M5 80 8 M6 M6 95 10 M8 M8 105 13 M10 M10 125 17 M1...
<b>Certificate</b>	ABS, LR, BV, DNVGL, NK, KR, IRS, RMRS, CCS

We can supply according to your requirement, drawings, class certificate needs, and delivery schedule.

### Technical Specifications

<b>Category</b>	Turnbuckle	<b>Model / SKU</b>	RIGGING-SCREW-BODY-STAINLESS-STEEL
<b>Material</b>	Stainless steel	<b>Weight / Size</b>	SIZE D1 L mm D2 mm M5 M5 80 8 M6 M6 95 10 M8 M8 105 13 M10 M10 125 17 M12 M12 150 21 M14 M14 165 21 M16 M16 190 26.5 M20 M20 210 33.5
<b>Certificate</b>	ABS, LR, BV, DNVGL, NK, KR, IRS, RMRS, CCS	<b>Warranty</b>	12 Months unless specified otherwise
<b>Origin</b>	China		

## China Rigging Screw Body Stainless Steel:



SIZE	D1	L mm	D2 mm
M5	M5	80	8
M6	M6	95	10
M8	M8	105	13
M10	M10	125	17
M12	M12	150	21
M14	M14	165	21
M16	M16	190	26.5
M20	M20	210	33.5