

# Jinbo Marine

Marine &amp; Offshore Equipment Datasheet

PRODUCT DATASHEET

## MARINE COVER

## Steel Hatch Cover Type A

Steel Small Size Hatch Cover Standard: CB/T3728-1995 It is used for small size hatch cover of various ships, meet ISO 5778-1979, and have the Type A, B,C, D, E,F. Type A is single side opened/closed weatherti...

ISO9001 Supplier

Class Certificate

Export Supply



### Key Highlights

Category	Marine Cover
Standard	ISO
Material	Steel
Weight / Size	Steel Small Size Hatch Cover Standard:
Certificate	CCS, BV, ABS, GL, LR, DNV, NK,RINA, KR,IRS

We can supply according to your requirement, drawings, class certificate needs, and delivery schedule.

### Technical Specifications

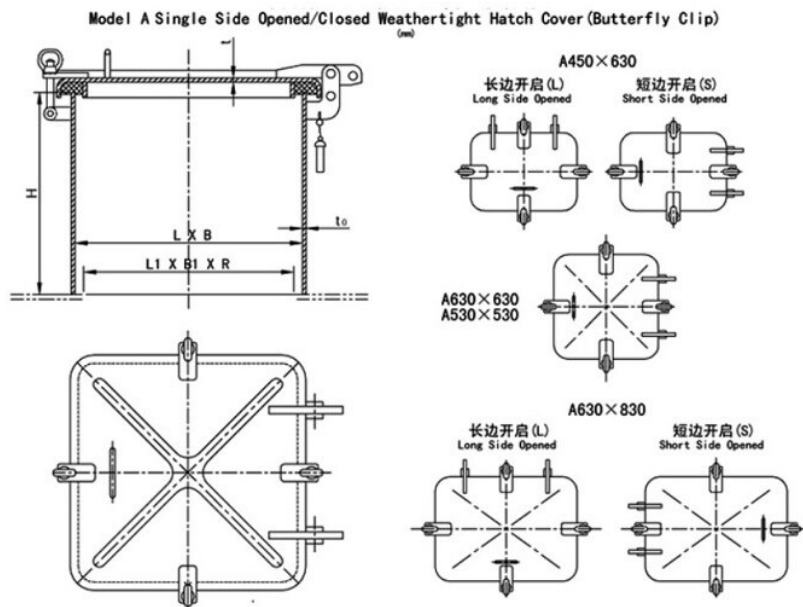
Category	Marine Cover	Model / SKU	Steel-Hatch-Cover-Type-A
Standard	ISO	Material	Steel
Weight / Size	Steel Small Size Hatch Cover Standard:	Certificate	CCS, BV, ABS, GL, LR, DNV, NK,RINA, KR,IRS
Warranty	12 Months unless specified otherwise	Origin	China

#### CONTENTS

- China Steel Hatch Cover Type A:
- Main Size List(mm):
- Main Material:



# China Steel Hatch Cover Type A:



Steel Small Size Hatch Cover Standard: CB/T3728-1995

It is used for small size hatch cover of various ships, meet ISO 5778-1979, and have the Type A, B,C, D, E,F.

Type A is single side opened/closed weathertight hatch cover with butterfly clip.

\*The counter weight is added according to the size or the customer's request.

## Main Material:

Cover-Steel

Coaming-Steel

Dog Clip-Steel, Stainless Steel or Copper or Steel with galv

## Main Size List(mm):

Nominal Size(LXB)	Size of door way(L1XB1XR)	Size of Cover (L2XB2)	Thick of cover (t)	Coaming		Butterfly Clip		Weight(KG)
				to	H	Dia	Qty	

450*630	420*600*100	508*688	4	4.6	10 0 15 0 20 0	M16	4	24.4
		512*692	6	6.8				31.1
		516*696	8	8.1 1				37.7
530*530	500*500*100	508*588	4	4.6	25 0 45 0			24.2
		592*592	6	6.8				30.8
		596*596	8	8.1 1				37.4
630*630	600*600*100	688*688	4	4.6	60 0	M20		31.0
		692*692	6	6.8				39.8
		696*696	8	8.1 1				48.5
630*830	600*800*100	688*888	4	4.6				37.4
		692*892	6	6.8				48.5
		696*896	8	8.1 1				59.7
830*830	800*800*100	888*888	4	4.6			6	47.1
		892*892	6	6.8				61.2
		896*896	8	8.1 1				75.3
830*1230	800*1200*100	888*1288	4	4.6	80 0		8	65.2
		892*1292	6	6.8				85.3
		896*1296	8	8.1 1				175.2 (c/w counter weight)
1030*1030	1000*1000*100	1092*1092	6	6.8			6	146.6 (c/w counter weight)
		1096*1096	8	8.1 1				190.9 (c/w counter weight)
1330*1330	1300*1300*100	1396*1369	8	8.1 1			4	331.0 (c/w counter weight)

## Remarks:

- 1)The weight is not including the coaming weight.
- 2)The thickness and the height of the coaming are decided by the customer.