

Jinbo Marine

Marine & Offshore Equipment Datasheet

PRODUCT DATASHEET

ROPE THIMBLES

US Type Heavy Duty Wire Rope Thimbles G-414

ISO9001 Supplier

Class Certificate

Export Supply

Main Specifications Material: Q235 Finish: Hot Dip Galvanized or Painting Size: 1/8" to 1 1/4"
Used for Wire rope, mooring rope. Size Table R...



Key Highlights

Category	Rope Thimbles
Standard	EN
Material	Main Specifications Material:
Weight / Size	Hot Dip Galvanized or Painting Size:
Certificate	ABS, LR, BV, DNVGL, NK, KR, IRS, RMRS, CCS

We can supply according to your requirement, drawings, class certificate needs, and delivery schedule.

Technical Specifications

Category	Rope Thimbles	Model / SKU	US-Type-Heavy-Duty-Wire-Rope-Thimbles-G-414
Standard	EN	Material	Main Specifications Material:
Weight / Size	Hot Dip Galvanized or Painting Size:	Surface	Hot Dip Galvanized
Certificate	ABS, LR, BV, DNVGL, NK, KR, IRS, RMRS, CCS	Warranty	12 Months unless specified otherwise
Origin	China		

CONTENTS

 Main Specifications

 Size Table

Main Specifications

Material: Q235

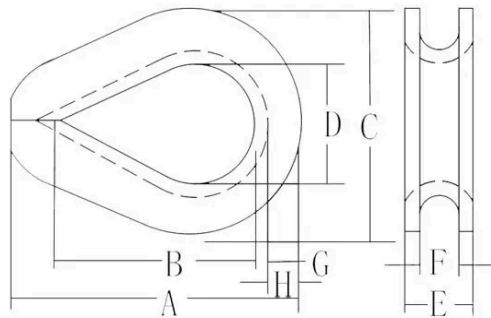
Finish: Hot Dip Galvanized or Painting



Size: 1/8" to 1 1/4"

Used for Wire rope, mooring rope.

Size Table



Rope Dia.(in.)	Weight /100(lbs.)	Dimensions(in.)								
		A	B	C	D	E	F	G	H	
*1/4	6.5	2.19	1.63	1.5	0.88	0.44	0.28	0.06	0.23	
*5/16	11.8	2.5	1.88	1.81	1.06	0.55	0.34	0.08	0.28	
*3/8	21.6	2.88	2.13	2.13	1.13	0.66	0.41	0.11	0.34	
*7/16	34.7	3.25	2.38	2.38	1.25	0.74	0.47	0.13	0.38	
*1/2-9/16	51	3.63	2.75	2.75	1.5	0.92	0.53	0.14	0.41	
*5/8	75.7	4.25	3.25	3.13	1.75	1.03	0.66	0.16	0.5	
*3/4	158.1	5	3.75	3.81	2	1.3	0.78	0.22	0.66	
7/8	177.8	5.5	4.25	4.25	2.25	1.47	0.94	0.22	0.75	
1	313.9	6.13	4.5	4.94	2.5	1.75	1.06	0.25	0.88	
1-1/8-1-1/4	400	7	5.13	5.88	2.88	1.94	1.31	0.25	1.13	
1-1/4-1-3/8	811	9.06	6.5	6.81	3.5	2.35	1.44	0.38	1.13	
1-3/8-1-1/2	1294.8	9	6.25	7.13	3.5	2.78	1.56	0.5	1.13	
1-5/8	1700	11.25	8	8.13	4	3.02	1.72	0.5	1.38	
'1 3/4	1775	12.19	9	8.5	4.5	3.06	1.84	0.5	1.31	
1-7/8-2	2775	15.13	12	10.38	6	3.38	2.09	0.5	1.5	
'2 1/4	3950	17.13	14	11.88	7	3.87	2.38	0.63	1.63	