

# Jinbo Marine

Marine & Offshore Equipment Datasheet

PRODUCT DATASHEET

## SHACKLE

# US Type Screw Pin Chain Shackle G210

ISO9001 Supplier

Class Certificate

Export Supply

Similar Name US Type Screw Pin Chain Shackles G-210 US Type Bolt Chain Shackle G-210 US Type Straight Shackle G-210 US Type High Strength Shackle G-210 US Type Alloy Steel Shackle G-210 ...



### Key Highlights

Category	Shackle
Standard	EN
Material	45# Steel and 40Cr Steel
Weight / Size	Size Table Nominal Size(in) WLL (Tons) Dimension(in) Weight ( lbs) A B C D...
Certificate	ABS, LR, BV, DNVGL, NK, KR, IRS, RMRS, CCS

We can supply according to your requirement, drawings, class certificate needs, and delivery schedule.



Technical Specifications			
Category	Shackle	Model / SKU	US-Type-Screw-Pin-Chain-Shackle-G210
Standard	EN	Material	45# Steel and 40Cr Steel
Weight / Size	Size Table Nominal Size(in) WLL (Tons) Dimension(in) Weight ( lbs) A B C D E F G K L M G210/S210 1/4 1/2 0.47 0.31 0.25 0.25 0.97 0.62 0.97 1.59 0.19 1.43 0.11 5/16 3/4 0.53 0.38 0.31 0.31 1.15 0.75 1.07 1.91 0.22 1.71 0.17 3/8 1 0.66 0.44 0.38 0.38 1.42 0.92 1.28 2.31 0.25 2.02 0.28 7/16 1 1/2 0.75 0.5 0.44 0.44 1.63 1.06 1.48 2.67 0.31 2.37 0.43 1/2 2 0.81 0.63 0.5 0.5 1.81 1.18 1.66 3.03 0.38 2.69 0.59 5/8 3 1/4 1.06 0.75 0.63 0.63 2.32 1.5 2.04 3.76 0.44 3.34 1.25 3/4 4 3/4 1.25 0.88 0.81 0.75 2.75 1.81 2.4 4.53 0.5 3.97 2.63 7/8 6 1/2 1.44 1 0.97 0.88 3.2 2.1 2.86 5.33 0.5 4.5 3.16 1 8 1/2 1.69 1.13 1 1 3.69 2.38 3.24 5.94 0.56 5.13 4.75 1 1/8 9 1/2 1.81 1.25 1.25 1.13 4.07 2.69 3.61 6.78 0.63 5.71 6.75 1 1/4 12 2.03 1.38 1.38 1.25 4.53 3 3.97 7.5 0.69 6.25 9.06 1 3/8 13 1/2 2.25 1.5 1.5 1.38 5.01 3.31 4.43 8.28 0.75 6.83 11.63 1 1/2 17 2.38 1.63 1.62 1.5 5.38 3.62 4.84 9.05 0.81 7.33 15.95 1 3/4 25 2.88 2 2.12 1.75 6.38 4.19 5.78 10.97 1 9.06 26.75 2 32 3.25 2.25 2.36 2.1 7.25 5 6.77 12.74 1.13 10.35 42.31 2 1/2 55 4.12 2.75 2.63 2.63 9.38 5.68 8.07 14.85 1.38 13 71.75	Certificate	ABS, LR, BV, DNVGL, NK, KR, IRS, RMRS, CCS
Warranty	12 Months unless specified otherwise	Origin	China

<b>CONTENTS</b>	■ Similar Name	■ Main Specification:
	■ Size Table	

## Similar Name

US Type Screw Pin Chain Shackles G-210



US Type Bolt Chain Shackle G-210

US Type Straight Shackle G-210

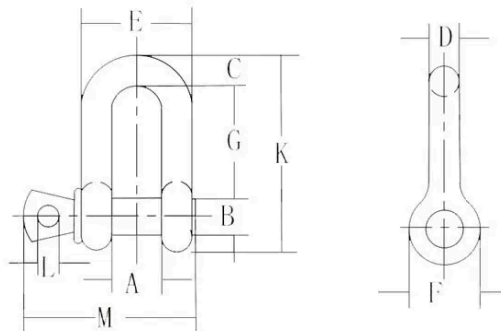
US Type High Strength Shackle G-210

US Type Alloy Steel Shackle G-210

## Main Specification:

- U type body and a lateral pin.
- Drop Forged
- 45# Steel and 40Cr Steel
- Used in lifting or fasten cargo or machinery purpose.

## Size Table



Nominal Size(in)	WLL (Tons)	Dimension(in)										Weight ( lbs)
		A	B	C	D	E	F	G	K	L	M	
1/4	1/2	0.47	0.31	0.25	0.25	0.97	0.62	0.97	1.59	0.19	1.43	0.11
5/16	3/4	0.53	0.38	0.31	0.31	1.15	0.75	1.07	1.91	0.22	1.71	0.17
3/8	1	0.66	0.44	0.38	0.38	1.42	0.92	1.28	2.31	0.25	2.02	0.28
7/16	1 1/2	0.75	0.5	0.44	0.44	1.63	1.06	1.48	2.67	0.31	2.37	0.43
1/2	2	0.81	0.63	0.5	0.5	1.81	1.18	1.66	3.03	0.38	2.69	0.59
5/8	3 1/4	1.06	0.75	0.63	0.63	2.32	1.5	2.04	3.76	0.44	3.34	1.25
3/4	4 3/4	1.25	0.88	0.81	0.75	2.75	1.81	2.4	4.53	0.5	3.97	2.63
7/8	6 1/2	1.44	1	0.97	0.88	3.2	2.1	2.86	5.33	0.5	4.5	3.16
1	8 1/2	1.69	1.13	1	1	3.69	2.38	3.24	5.94	0.56	5.13	4.75
1 1/8	9 1/2	1.81	1.25	1.25	1.13	4.07	2.69	3.61	6.78	0.63	5.71	6.75
1 1/4	12	2.03	1.38	1.38	1.25	4.53	3	3.97	7.5	0.69	6.25	9.06
1 3/8	13 1/2	2.25	1.5	1.5	1.38	5.01	3.31	4.43	8.28	0.75	6.83	11.63
1 1/2	17	2.38	1.63	1.62	1.5	5.38	3.62	4.84	9.05	0.81	7.5	17.0

1 3/4	25	2.88	2	2.12	1.75	6.38	4.19	5.78	10.97	1	9.06	26.75
2	32	3.25	2.25	2.36	2.1	7.25	5	6.77	12.74	1.13	10.35	42.31
2 1/2	55	4.12	2.75	2.63	2.63	9.38	5.68	8.07	14.85	1.38	13	71.75