

Jinbo Marine

Marine & Offshore Equipment Datasheet

PRODUCT DATASHEET

MEDIUM PRESSURE WATER COOLED MARINE AIR COMPRESSOR

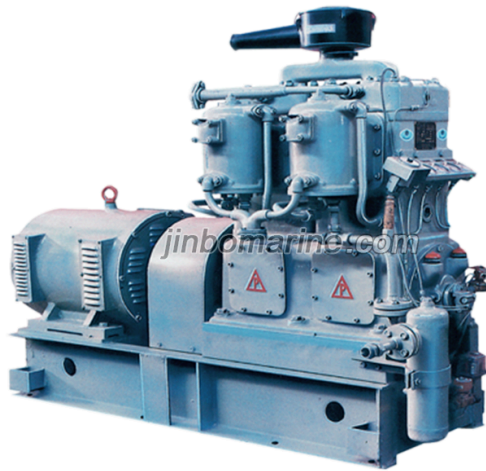
WP270 Large Capacity Water Cooled Marine Air Compressor

ISO9001 Supplier

Class Certificate

Export Supply

Design Particulars: Max Pressure 3.5Mpa Suitable for both seawater and freshwater Reliable Pressure oil lubrication Ensure safety operations by several monitoring devices Performance data wi...



Key Highlights

Category	Medium Pressure Water Cooled Marine Air Compressor
Standard	EN
Weight / Size	Model Pressure (MPa) Stages Speed/rpm (50Hz) Speed/rpm (60Hz) Capacity (...)
Certificate	CCS, GL, LR, BV, DNV, ABS, NK, KR, RMRS, RINA

We can supply according to your requirement, drawings, class certificate needs, and delivery schedule.



Technical Specifications			
Category	Medium Pressure Water Cooled Marine Air Compressor	Model / SKU	WP270-Large-Capacity-Water-Cooled-Marine-Air-Compressor
Standard	EN	Weight / Size	Model Pressure (MPa) Stages Speed/rpm (50Hz) Speed/rpm (60Hz) Capacity (m3/h) Power required (KW) Power of motor (KW) Cooling water required (L/min) Dimension (LxWxH) WP60 3 2 870 50 10 11 15 1282*600*1120 970 54 13 15 16 1170 68 14.5 15 19 1450 84 18 18.5 24 WP110 3.0 2 870 81 18 18.5 25 1425*840*1370 970 91 20 22 27 1170 110 24 30 33 1450 100 17 18.5 35 NWP180 3.0 2 870 120 21 22 40 1600*740*1220 970 160 26 30 50 1170 180 31 37 60 WP135 3.0 2 870 106 21 22 29 1425*840*1370 970 118 23.5 30 32 1170 142 28.5 30 39 WP160 3.0 2 870 126 24.5 30 34 1425*840*1370 970 141 28 30 39 1170 170 34 37 47 WP185 3.0 2 870 145 28 30 39 1425*840*1370 970 162 31.5 37 44 1170 195 39 45 54 WP220 3.0 2 870 174 38.5 45 54 1975*950*1568 970 191 41 45 56 1170 230 48.5 55 68 WP270 3.0 2 870 223 42.5 45 59 1975*950*1568 970 248 47 55 66 1170 300 57 75 79 WP320 3.0 2 870 264 50.5 55 68 1975*950*1568 970 294 56.5 75 76 1170 355 68 75 92 WP370 3.0 2 870 308 57.5 75 80 1975*950*1568 970 344 65 75 90 1170 415 78 90 108 WP2001 3.0 2 970 110 21 22 56 1170 135 25 30 66 1470 165 31 37 80 WP2401 3.0 2 970 130 25 30 66 1500*1000*900 1170 160 31 37 80 1470 200 38 45 100
Certificate	CCS, GL, LR, BV, DNV, ABS, NK, KR, RMRS, RINA	Warranty	12 Months unless specified otherwise
Origin	China		



CONTENTS

■ Design Particulars:

■ Technical Data:

Design Particulars:

Max Pressure 3.5Mpa

Suitable for both seawater and freshwater

Reliable Pressure oil lubrication


Ensure safety operations by several monitoring devices

Performance data with 5% tolerance

Standard voltage and frequency: 380V/50HZ, 440V/60HZ

**Technical Data:**

Model	Pressure (MPa)	Stages	Speed/rpm (50Hz)	Speed/rpm (60Hz)	Capacity (m3/h)	Power required (KW)	Power of motor (KW)	Cooling water required (L/min)	Dimension (LxWxH)
WP60	3	2	870	50	10	11	15	1282*600*1120	
			970	54	13	15	16		
			1170	68	14.5	15	19		
			1450	84	18	18.5	24		
WP110	3.0	2	870	81	18	18.5	25	1425*840*1370	
			970	91	20	22	27		
			1170	110	24	30	33		
			1450	100	17	18.5	35		
NWP180	3.0	2	870	120	21	22	40	1600*740*1220	
			970	160	26	30	50		
			1170	180	31	37	60		

 0.085834s

WP135	3.0	2	870	106	21	22	29	1425*840*1370
			970	118	23.5	30	32	
			1170	142	28.5	30	39	
WP160	3.0	2	870	126	24.5	30	34	1425*840*1370
			970	141	28	30	39	
			1170	170	34	37	47	
WP185	3.0	2	870	145	28	30	39	1425*840*1370
			970	162	31.5	37	44	
			1170	195	39	45	54	
WP220	3.0	2	870	174	38.5	45	54	1975*950*1568
			970	191	41	45	56	
			1170	230	48.5	55	68	
WP270	3.0	2	870	223	42.5	45	59	1975*950*1568
			970	248	47	55	66	
			1170	300	57	75	79	
WP320	3.0	2	870	264	50.5	55	68	1975*950*1568
			970	294	56.5	75	76	
			1170	355	68	75	92	
WP370	3.0	2	870	308	57.5	75	80	1975*950*1568
			970	344	65	75	90	
			1170	415	78	90	108	
WP200 1	3.0	2	970	110	21	22	56	
			1170	135	25	30	66	
			1470	165	31	37	80	
WP240 1	3.0	2	970	130	25	30	66	1500*1000*900
			1170	160	31	37	80	
			1470	200	38	45	100	

