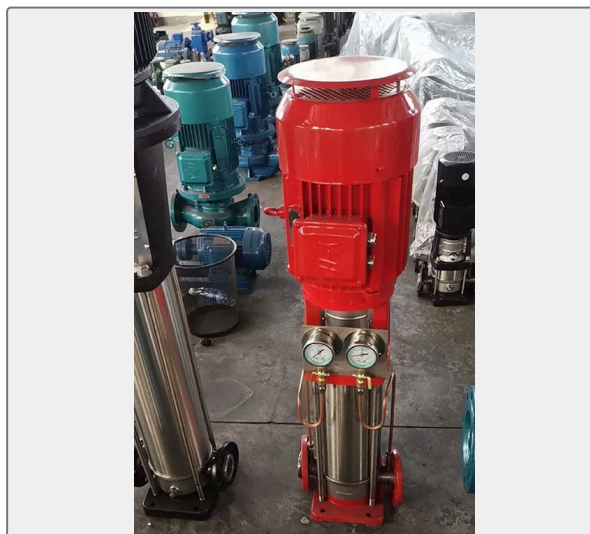


Technical Specifications			
Category	Centrifugal Pump	Model / SKU	XBD1-6-0-17-DLGW-Vertical-multi-stage-centrifugal-fire-water-supply
Standard	DIN	Weight / Size	XBD Vertical multi-stage centrifugal fire water supply Product Overview The XBD multi-stage centrifugal pump has the advantages of small volume, light weight, low vibration, low noise, long service life, small footprint, and beautiful appearance, especially high efficiency and energy saving. Product Usage XBD multistage centrifugal pump is applicable to the pressure stabilization of fire fighting in high-rise buildings, and the water supply of fixed fire fighting systems (fire hydrant extinguishing system, automatic extinguishing system, water spray system, etc.) in industrial and civil buildings.
Certificate	ABS, LR, BV, DNVGL, NK, KR, IRS, RMRS, CCS	Warranty	12 Months unless specified otherwise
Origin	China		

CONTENTS	■ XBD Vertical multi-stage centrifugal fire water supply	■ Technical data:
-----------------	--	-------------------

XBD Vertical multi-stage centrifugal fire water supply



Product Overview



The XBD multi-stage centrifugal pump has the advantages of small volume, light weight, low vibration, low noise, long service life, small footprint, and beautiful appearance, especially high efficiency and energy saving.

Product Usage

XBD multistage centrifugal pump is applicable to the pressure stabilization of fire fighting in high-rise buildings, and the water supply of fixed fire fighting systems (fire hydrant extinguishing system, automatic extinguishing system, water spray system, etc.) in industrial and civil buildings. It can also be widely used in industries such as pressure vessel water supply, boiler water supply, high-rise building water supply, hot water circulation, hydraulic flushing, etc., as a power equipment for water supply and drainage.

Working conditions

Flow rate: $Q=0.3\sim 360\text{m}^3/\text{h}$

Head: $H=16\sim 415\text{m}$

Medium temperature: $0\sim 120\text{ }^\circ\text{C}$

Power supply: 50Hz, 380V

Model significance

XBD1.5-20/0.08-2.5

XB fire pump

D electric motor

1.5-20 rated pressure 15-200MPa

0.08-2.5 rated flow rate 0.08-2.5L/s

Technical data:

XBD Pa/0.08—DLGW Vertical multi-stage centrifugal fire water supply stabilizing pump						
Model	Flow	Pressure	Grade	Speed	Efficiency	Power
	(L/S)	(MPa)	n	(rpm)	(%)	(kW)

XBD1.7/0.08-DLGW	0.08	0.17	2	2900	12.5	0.37
XBD2.5/0.08-DLGW		0.25	3			
XBD3.3/0.08-DLGW		0.33	4			
XBD4.2/0.08-DLGW		0.42	5			0.55
XBD5.0/0.08-DLGW		0.5	6			
XBD5.8/0.08-DLGW		0.58	7			
XBD6.7/0.08-DLGW		0.67	8			0.75
XBD7.5/0.08-DLGW		0.75	9			
XBD8.3/0.08-DLGW		0.83	10			
XBD9.2/0.08-DLGW		0.92	11			1.1
XBD10.0/0.08-DLGW		1	12			
XBD10.8/0.08-DLGW		1.08	13			
XBD11.7/0.08-DLGW		1.17	14			1.5
XBD12.5/0.08-DLGW		1.25	15			
XBD13.3/0.08-DLGW		1.33	16			
XBD14.2/0.08-DLGW		1.42	17			2.2
XBD15.0/0.08-DLGW		1.5	18			
XBD15.8/0.08-DLGW		1.58	19			
XBD16.7/0.08-DLGW	1.67	20				
XBD17.5/0.08-DLGW	1.75	21				
XBD18.3/0.08-DLGW	1.83	22				
XBD Pa/0.17—DLGW Vertical multi-stage centrifugal fire water supply stabilizing pump						
Model	Flow	Pressure	Grade	Speed	Efficiency	Power
	(L/S)	(MPa)	n	(rpm)	(%)	(kW)

XBD1.6/0.17-DLGW	0.17	0.16	2	2900	18	0.37
XBD2.4/0.17-DLGW		0.24	3			
XBD3.1/0.17-DLGW		0.31	4			
XBD3.9/0.17-DLGW		0.39	5			0.55
XBD4.7/0.17-DLGW		0.47	6			
XBD5.5/0.17-DLGW		0.55	7			
XBD6.3/0.17-DLGW		0.63	8			0.75
XBD7.1/0.17-DLGW		0.71	9			
XBD7.8/0.17-DLGW		0.78	10			
XBD8.6/0.17-DLGW		0.86	11			1.1
XBD9.4/0.17-DLGW		0.94	12			
XBD10.2/0.17-DLGW		1.02	13			
XBD11.0/0.17-DLGW		1.1	14			1.5
XBD11.8/0.17-DLGW		1.18	15			
XBD12.6/0.17-DLGW		1.26	16			
XBD13.3/0.17-DLGW		1.33	17			2.2
XBD14.1/0.17-DLGW		1.41	18			
XBD14.9/0.17-DLGW	1.49	19				
XBD15.7/0.17-DLGW	1.57	20	2.2			
XBD16.5/0.17-DLGW	1.65	21				
XBD17.3/0.17-DLGW	1.73	22				
XBD Pa/0.3—DLGW Vertical multi-stage centrifugal fire water supply stabilizing pump						
Model	Flow	Pressure	Grade	Speed	Efficiency	Power
	(L/S)	(MPa)	n	(rpm)	(%)	(kW)

XBD1.8/0.3-DLGW	0.3	0.18	2	2900	34	0.55
XBD2.6/0.3-DLGW		0.26	3			0.75
XBD3.5/0.3-DLGW		0.35	4			1.1
XBD4.4/0.3-DLGW		0.44	5			1.5
XBD5.3/0.3-DLGW		0.53	6			
XBD6.2/0.3-DLGW		0.62	7			
XBD7.1/0.3-DLGW		0.71	8			
XBD7.9/0.3-DLGW		0.79	9			
XBD8.8/0.3-DLGW		0.88	10			2.2
XBD9.7/0.3-DLGW		0.97	11			
XBD10.6/0.3-DLGW		1.06	12			
XBD11.5/0.3-DLGW		1.15	13			
XBD12.4/0.3-DLGW		1.24	14			
XBD13.2/0.3-DLGW		1.32	15			3
XBD14.1/0.3-DLGW		1.41	16			
XBD15.0/0.3-DLGW		1.5	17			
XBD15.9/0.3-DLGW		1.59	18			
XBD16.8/0.3-DLGW		1.68	19			
XBD17.7/0.3-DLGW		1.77	20			
XBD18.5/0.3-DLGW		1.85	21			
XBD19.4/0.3-DLGW		1.94	22			
XBD Pa /0.7—DLGW Vertical multi-stage centrifugal fire water supply stabilizing pump						
Model	Flow	Pressure	Grade	Speed	Efficiency	Power
	(L/S)	(MPa)	n	(rpm)	(%)	(kW)

XBD1.6/0.7-DLGW	0.7	0.16	2	2900	39	0.55
XBD2.4/0.7-DLGW		0.24	3			0.75
XBD3.1/0.7-DLGW		0.31	4			1.1
XBD3.9/0.7-DLGW		0.39	5			1.5
XBD4.7/0.7-DLGW		0.47	6			
XBD5.5/0.7-DLGW		0.55	7			
XBD6.3/0.7-DLGW		0.63	8			
XBD7.1/0.7-DLGW		0.71	9			
XBD7.8/0.7-DLGW		0.78	10			2.2
XBD8.6/0.7-DLGW		0.86	11			
XBD9.4/0.7-DLGW		0.94	12			
XBD10.2/0.7-DLGW		1.02	13			
XBD11.0/0.7-DLGW		1.1	14			
XBD11.8/0.7-DLGW		1.18	15			3
XBD12.6/0.7-DLGW		1.26	16			
XBD13.3/0.7-DLGW		1.33	17			
XBD14.1/0.7-DLGW		1.41	18			
XBD14.9/0.7-DLGW	1.49	19				
XBD15.7/0.7-DLGW	1.57	20				
XBD16.5/0.7-DLGW	1.65	21				
XBD17.6/0.7-DLGW	1.73	22				
XBD Pa / 1—DLGW Vertical multi-stage centrifugal fire water supply stabilizing pump						
Model	Flow	Pressure	Grade	Speed	Efficiency	Power
	(L/S)	(MPa)	n	(rpm)	(%)	(kW)

XBD1.7/1-DLGW	1	0.17	2	2900	48	0.75
XBD2.5/1-DLGW		0.25	3			
XBD3.3/1-DLGW		0.33	4			1.1
XBD4.2/1-DLGW		0.42	5			
XBD5.0/1-DLGW		0.5	6			1.5
XBD5.8/1-DLGW		0.58	7			
XBD6.7/1-DLGW		0.67	8			
XBD7.5/1-DLGW		0.75	9			2.2
XBD8.3/1-DLGW		0.83	10			
XBD9.2/1-DLGW		0.92	11			
XBD10.0/1-DLGW		1	12			
XBD10.8/1-DLGW		1.08	13			3
XBD11.7/1-DLGW		1.17	14			
XBD12.5/1-DLGW		1.25	15			
XBD13.3/1-DLGW		1.33	16			
XBD14.2/1-DLGW		1.42	17			
XBD15.0/1-DLGW		1.5	18			4
XBD15.8/1-DLGW		1.58	19			
XBD16.7/1-DLGW	1.67	20				
XBD17.5/1-DLGW	1.75	21				
XBD18.3/1-DLGW	1.83	22				
XBD Pa.1.1—DLGW Vertical multi-stage centrifugal fire water supply stabilizing pump						
Model	Flow	Pressure	Grade	Speed	Efficiency	Power
	(L/S)	(MPa)	n	(rpm)	(%)	(kW)

XBD1.6/1.1-DLGW	1.1	0.16	2	2900	48	0.75
XBD2.4/1.1-DLGW		0.24	3			
XBD3.1/1.1-DLGW		0.31	4			1.1
XBD3.9/1.1-DLGW		0.39	5			
XBD4.7/1.1-DLGW		0.47	6			1.5
XBD5.5/1.1-DLGW		0.55	7			
XBD6.3/1.1-DLGW		0.63	8			
XBD7.1/1.1-DLGW		0.71	9			2.2
XBD7.8/1.1-DLGW		0.78	10			
XBD8.6/1.1-DLGW		0.86	11			
XBD9.4/1.1-DLGW		0.94	12			
XBD10.2/1.1-DLGW		1.02	13			3
XBD11.0/1.1-DLGW		1.1	14			
XBD11.8/1.1-DLGW		1.18	15			
XBD12.6/1.1-DLGW		1.26	16			
XBD13.3/1.1-DLGW		1.33	17			
XBD14.1/1.1-DLGW		1.41	18			4
XBD14.9/1.1-DLGW	1.49	19				
XBD15.7/1.1-DLGW	1.57	20				
XBD16.5/1.1-DLGW	1.65	21				
XBD17.3/1.1-DLGW	1.73	22				
XBD Pa/1.3—DLGW Vertical multi-stage centrifugal fire water supply stabilizing pump						
Model	Flow	Pressure	Grade	Speed	Efficiency	Power
	(L/S)	(MPa)	n	(rpm)	(%)	(kW)

XBD1.5/1.3-DLGW	1.3	0.15	2	2900	53	0.75
XBD2.2/1.3-DLGW		0.22	3			
XBD2.9/1.3-DLGW		0.29	4			1.1
XBD3.7/1.3-DLGW		0.37	5			
XBD4.4/1.3-DLGW		0.44	6			1.5
XBD5.1/1.3-DLGW		0.51	7			
XBD5.9/1.3-DLGW		0.59	8			
XBD6.6/1.3-DLGW		0.66	9			2.2
XBD7.4/1.3-DLGW		0.74	10			
XBD8.1/1.3-DLGW		0.81	11			
XBD8.8/1.3-DLGW		0.88	12			
XBD9.6/1.3-DLGW		0.96	13			3
XBD10.3/1.3-DLGW		1.03	14			
XBD11.0/1.3-DLGW		1.1	15			
XBD11.8/1.3-DLGW		1.18	16			
XBD12.5/1.3-DLGW		1.25	17			
XBD13.2/1.3-DLGW		1.32	18			4
XBD14.0/1.3-DLGW		1.4	19			
XBD14.7/1.3-DLGW		1.47	20			
XBD15.4/1.3-DLGW		1.54	21			
XBD16.2/1.3-DLGW		1.62	22			
XBD Pa/1.5—DLGW Vertical multi-stage centrifugal fire water supply stabilizing pump						
Model	Flow	Pressure	Grade	Speed	Efficiency	Power
	(L/S)	(MPa)	n	(rpm)	(%)	(kW)

XBD1.9/1.5-DLGW	1.5	0.19	2	2900	52	1.1
XBD2.8/1.5-DLGW		0.28	3			1.5
XBD3.7/1.5-DLGW		0.37	4			2.2
XBD4.7/1.5-DLGW		0.47	5			
XBD5.6/1.5-DLGW		0.56	6			
XBD6.5/1.5-DLGW		0.65	7			
XBD7.5/1.5-DLGW		0.75	8			
XBD8.4/1.5-DLGW		0.84	9			4
XBD9.3/1.5-DLGW		0.93	10			
XBD10.2/1.5-DLGW		1.02	11			
XBD11.2/1.5-DLGW		1.12	12			
XBD12.1/1.5-DLGW		1.21	13			
XBD13.0/1.5-DLGW		1.3	14			7.5
XBD14.0/1.5-DLGW		1.4	15			
XBD14.9/1.5-DLGW		1.49	16			
XBD15.8/1.5-DLGW		1.58	17			
XBD16.8/1.5-DLGW		1.68	18			
XBD17.7/1.5-DLGW		1.77	19			7.5
XBD18.6/1.5-DLGW		1.86	20			
XBD19.6/1.5-DLGW		1.96	21			
XBD20.5/1.5-DLGW	2.05	22				
XBD Pa.2.2—DLGW Vertical multi-stage centrifugal fire water supply stabilizing pump						
Model	Flow	Pressure	Grade	Speed	Efficiency	Power
	(L/S)	(MPa)	n	(rpm)	(%)	(kW)

XBD1.6/2.2-DLGW	2.2	0.16	2	2900	55	1.1
XBD2.4/2.2-DLGW		0.24	3			1.5
XBD3.1/2.2-DLGW		0.31	4			2.2
XBD3.9/2.2-DLGW		0.39	5			
XBD4.7/2.2-DLGW		0.47	6			
XBD5.5/2.2-DLGW		0.55	7			
XBD6.3/2.2-DLGW		0.63	8			
XBD7.1/2.2-DLGW		0.71	9			4
XBD7.8/2.2-DLGW		0.78	10			
XBD8.6/2.2-DLGW		0.86	11			
XBD9.4/2.2-DLGW		0.94	12			5.5
XBD10.2/2.2-DLGW		1.02	13			
XBD11.0/2.2-DLGW		1.1	14			
XBD11.8/2.2-DLGW		1.18	15			
XBD12.6/2.2-DLGW		1.26	16			
XBD13.3/2.2-DLGW		1.33	17			7.5
XBD14.1/2.2-DLGW		1.41	18			
XBD14.9/2.2-DLGW	1.49	19				
XBD15.7/2.2-DLGW	1.57	20				
XBD16.5/2.2-DLGW	1.65	21				
XBD17.3/2.2-DLGW	1.73	22				
XBD Pa/3.5—DLGZ Vertical multi-stage centrifugal fixed fire pump						
Model	Flow	Pressure	Grade	Speed	Efficiency	Power
	(L/S)	(MPa)	n	(rpm)	(%)	(kW)

XBD2.9/3.5-DLGZ	3.5	0.29	2	2950	60	2.2
XBD4.4/3.5-DLGZ		0.44	3			3
XBD5.9/3.5-DLGZ		0.59	4			4
XBD7.4/3.5-DLGZ		0.74	5			5.5
XBD8.8/3.5-DLGZ		0.88	6			7.5
XBD10.3/3.5-DLGZ		1.03	7			
XBD11.8/3.5-DLGZ		1.18	8			11
XBD13.2/3.5-DLGZ		1.32	9			
XBD14.7/3.5-DLGZ		1.47	10			
XBD16.2/3.5-DLGZ		1.62	11			
XBD17.7/3.5-DLGZ		1.77	12			15
XBD19.1/3.5-DLGZ		1.91	13			
XBD20.6/3.5-DLGZ		2.06	14			

XBD Pa / 5—DLGZ Vertical multi-stage centrifugal fixed fire pump

Model	Flow	Pressure	Grade	Speed	Efficiency	Power
	(L/S)	(MPa)	n	(rpm)	(%)	(kW)
XBD3.1/5-DLGZ	5	0.31	2	2950	65	3
XBD4.7/5-DLGZ		0.47	3			4
XBD6.3/5-DLGZ		0.63	4			5.5
XBD7.8/5-DLGZ		0.78	5			7.5
XBD9.4/5-DLGZ		0.94	6			11
XBD11.0/5-DLGZ		1.1	7			
XBD12.6/5-DLGZ		1.26	8			
XBD14.1/5-DLGZ		1.41	9			15
XBD15.7/5-DLGZ		1.57	10			
XBD17.3/5-DLGZ		1.73	11			
XBD18.8/5-DLGZ		1.88	12			18.5
XBD20.4/5-DLGZ		2.04	13			
XBD22.0/5-DLGZ		2.2	14			

XBD Pa/7—DLGZ Vertical multi-stage centrifugal fixed fire pump

Model	Flow	Pressure	Grade	Speed	Efficiency	Power
	(L/S)	(MPa)	n	(rpm)	(%)	(kW)

XBD2.3/7-DLGZ	7	0.23	2	2950	61	4
XBD3.4/7-DLGZ		0.34	3			5.5
XBD4.5/7-DLGZ		0.45	4			
XBD5.6/7-DLGZ		0.56	5			7.5
XBD6.8/7-DLGZ		0.68	6			
XBD7.9/7-DLGZ		0.79	7			11
XBD9.0/7-DLGZ		0.9	8			
XBD10.2/7-DLGZ		1.02	9			15
XBD11.3/7-DLGZ		1.13	10			
XBD12.4/7-DLGZ		1.24	11			
XBD13.5/7-DLGZ		1.35	12			18.5
XBD14.7/7-DLGZ		1.47	13			
XBD15.8/7-DLGZ		1.58	14			22
XBD16.9/7-DLGZ		1.69	15			

XBD Pa / 10—DLGZ Vertical multi-stage centrifugal fixed fire pump

Model	Flow	Pressure	Grade	Speed	Efficiency	Power
	(L/S)	(MPa)	n	(rpm)	(%)	(kW)
XBD5.9/10-DLGZ	10	0.59	2	2950	65	11
XBD8.8/10-DLGZ		0.88	3			15
XBD11.8/10-DLGZ		1.18	4			20
XBD14.7/10-DLGZ		1.47	5			30
XBD17.7/10-DLGZ		1.77	6			
XBD20.6/10-DLGZ		2.06	7			37
XBD23.5/10-DLGZ		2.35	8			45
XBD26.5/10-DLGZ		2.65	9			

XBD Pa /15—DLGZ Vertical multi-stage centrifugal fixed fire pump

Model	Flow	Pressure	Grade	Speed	Efficiency	Power
	(L/S)	(MPa)	n	(rpm)	(%)	(kW)

XBD2.2/15-DLGZ	15	0.22	2	2950	68	5.5
XBD3.2/15-DLGZ		0.32	3			7.5
XBD4.3/15-DLGZ		0.43	4			11
XBD5.4/15-DLGZ		0.54	5			15
XBD6.5/15-DLGZ		0.65	6			18.5
XBD7.6/15-DLGZ		0.76	7			22
XBD8.6/15-DLGZ		0.86	8			

XBD Pa/3.5—DLGZ Vertical multi-stage centrifugal fixed fire pump

Model	Flow	Pressure	Grade	Speed	Efficiency	Power
	(L/S)	(MPa)	n	(rpm)	(%)	(kW)

XBD2.5/3.5-DLGZ	2.5	0.26	2	1450	50	3
	3.5	0.25			54	
	4.5	0.21			52	
XBD3.7/3.5-DLGZ	2.5	0.39	3		50	3
	3.5	0.37			54	
	4.5	0.31			52	
XBD4.9/3.5-DLGZ	2.5	0.52	4		50	4
	3.5	0.49			54	
	4.5	0.42			52	
XBD6.1/3.5-DLGZ	2.5	0.65	5		50	5.5
	3.5	0.61		54		
	4.5	0.52		52		
XBD7.4/3.5-DLGZ	2.5	0.78	6	50	5.5	
	3.5	0.74		54		
	4.5	0.62		52		
XBD8.6/3.5-DLGZ	2.5	0.91	7	50	7.5	
	3.5	0.86		54		
	4.5	0.73		52		
XBD9.8/3.5-DLGZ	2.5	1.04	8	50	7.5	
	3.5	0.98		54		
	4.5	0.83		52		
XBD11.0/3.5-DLGZ	2.5	1.17	9	50	11	
	3.5	1.1		54		
	4.5	0.94		52		
XBD12.3/3.5-DLGZ	2.5	1.3	10	50	11	
	3.5	1.23		54		
	4.5	1.04		52		
XBD Pa/8.3—DLGZ Vertical multi-stage centrifugal fixed fire pump						
Model	Flow	Pressure	Grade	Speed	Efficiency	Power
	(L/S)	(MPa)	n	(rpm)	(%)	(kW)

XBD3.1/8.3-DLGZ	5	0.36	2	1450	56	5.5
	8.3	0.31			62	
	10	0.28			60	
XBD4.7/8.3-DLGZ	5	0.54	3	1450	56	7.5
	8.3	0.47			62	
	10	0.43			60	
XBD6.3/8.3-DLGZ	5	0.73	4	1450	56	11
	8.3	0.63			62	
	10	0.57			60	
XBD7.8/8.3-DLGZ	5	0.91	5	1450	56	15
	8.3	0.78			62	
	10	0.71			60	
XBD9.4/8.3-DLGZ	5	1.09	6	1450	56	15
	8.3	0.94			62	
	10	0.85			60	
XBD11.0/8.3-DLGZ	5	1.27	7	1450	56	18.5
	8.3	1.1			62	
	10	1			60	
XBD12.6/8.3-DLGZ	5	1.45	8	1450	56	22
	8.3	1.26			62	
	10	1.14			60	
XBD14.1/8.3-DLGZ	5	1.64	9	1450	56	22
	8.3	1.41			62	
	10	1.28			60	
XBD15.7/8.3-DLGZ	5	1.81	10	1450	56	30
	8.3	1.57			62	
	10	1.42			60	

XBD Pa/13.9—DLGZ Vertical multi-stage centrifugal fixed fire pump

Model	Flow	Pressure	Grade	Speed	Efficiency	Power
	(L/S)	(MPa)	n	(rpm)	(%)	(kW)

XBD3.9/13.9-DLGZ	8.88	0.42	2	1450	60	11
	13.9	0.39			70	
	18.1	0.34			67	
XBD5.9/13.9-DLGZ	8.88	0.64	3	1450	60	15
	13.9	0.59			70	
	18.1	0.5			67	
XBD7.8/13.9-DLGZ	8.88	0.85	4	1450	60	22
	13.9	0.78			70	
	18.1	0.67			67	
XBD9.8/13.9-DLGZ	8.88	1.06	5	1450	60	30
	13.9	0.98			70	
	18.1	0.84			67	
XBD11.8/13.9-DLGZ	8.88	1.27	6	1450	60	30
	13.9	1.18			70	
	18.1	1.01			67	
XBD13.7/13.9-DLGZ	8.88	1.48	7	1450	60	37
	13.9	1.37			70	
	18.1	1.17			67	
XBD15.7/13.9-DLGZ	8.88	1.69	8	1450	60	45
	13.9	1.57			70	
	18.1	1.34			67	
XBD17.7/13.9-DLGZ	8.88	1.91	9	1450	60	45
	13.9	1.77			70	
	18.1	1.51			67	
XBD19.6/13.9-DLGZ	8.88	2.12	10	1450	60	55
	13.9	1.96			70	
	18.1	1.68			67	
XBD Pa /20—DLGZ Vertical multi-stage centrifugal fixed fire pump						
Model	Flow	Pressure	Grade	Speed	Efficiency	Power
	(L/S)	(MPa)	n	(rpm)	(%)	(kW)

XBD3.9/20-DLGZ	14	0.44	2	1480	68	18.5
	20	0.39			72	
	25	0.35			73	
XBD5.9/20-DLGZ	14	0.66	3		68	22
	20	0.59			72	
	25	0.53			73	
XBD7.8/20-DLGZ	14	0.88	4		68	30
	20	0.78			72	
	25	0.71			73	
XBD9.8/20-DLGZ	14	1.1	5		68	37
	20	0.98		72		
	25	0.88		73		
XBD11.8/20-DLGZ	14	1.32	6	68	45	
	20	1.18		72		
	25	1.06		73		
XBD13.7/20-DLGZ	14	1.54	7	68	55	
	20	1.37		72		
	25	1.22		73		
XBD15.7/20-DLGZ	14	1.77	8	68	55	
	20	1.57		72		
	25	1.41		73		
XBD17.7/20-DLGZ	14	1.99	9	68	75	
	20	1.77		72		
	25	1.59		73		
XBD19.6/20-DLGZ	14	2.21	10	68	75	
	20	1.96		72		
	25	1.77		73		
XBD Pa/27.8—DLGZ Vertical multi-stage centrifugal fixed fire pump						
Model	Flow	Pressure	Grade	Speed	Efficiency	Power
	(L/S)	(MPa)	n	(rpm)	(%)	(kW)

XBD3.9/27.8-DLGZ	20	0.43	2	1480	65	22
	27.8	0.39			72	
	33	0.38			70	
XBD5.9/27.8-DLGZ	20	0.64	3		65	30
	27.8	0.59			72	
	33	0.57			70	
XBD7.8/27.8-DLGZ	20	0.85	4		65	37
	27.8	0.78			72	
	33	0.76			70	
XBD9.8/27.8-DLGZ	20	1.06	5		65	45
	27.8	0.98		72		
	33	0.96		70		
XBD11.8/27.8-DLGZ	20	1.28	6	65	55	
	27.8	1.18		72		
	33	1.15		70		
XBD13.7/27.8-DLGZ	20	1.49	7	65	75	
	27.8	1.37		72		
	33	1.34		70		
XBD15.7/27.8-DLGZ	20	1.7	8	65	75	
	27.8	1.57		72		
	33	1.53		70		
XBD17.7/27.8-DLGZ	20	1.92	9	65	90	
	27.8	1.77		72		
	33	1.72		70		
XBD19.6/27.8-DLGZ	20	2.13	10	65	90	
	27.8	1.96		72		
	33	1.91		70		

XBD Pa/41.6—DLGZ Vertical multi-stage centrifugal fixed fire pump

Model	Flow	Pressure	Grade	Speed	Efficiency	Power
	(L/S)	(MPa)	n	(rpm)	(%)	(kW)

XBD3.9/41.6-DLGZ	30	0.44	2	1480	75	30
	41.6	0.39			80	
	50	0.33			78	
XBD5.9/41.6-DLGZ	30	0.66	3		75	37
	41.6	0.59			80	
	50	0.5			78	
XBD7.8/41.6-DLGZ	30	0.88	4		75	45
	41.6	0.78			80	
	50	0.67			78	
XBD9.8/41.6-DLGZ	30	1.1	5	75	55	
	41.6	0.98		80		
	50	0.83		78		
XBD11.8/41.6-DLGZ	30	1.32	6	75	75	
	41.6	1.18		80		
	50	1		78		
XBD13.7/41.6-DLGZ	30	1.54	7	75	75	
	41.6	1.37		80		
	50	11.7		78		
XBD15.7/41.6-DLGZ	30	1.77	8	75	90	
	41.6	1.57		80		
	50	1.33		78		
XBD Pa/55.6—DLGZ Vertical multi-stage centrifugal fixed fire pump						
Model	Flow	Pressure	Grade	Speed	Efficiency	Power
	(L/S)	(MPa)	n	(rpm)	(%)	(kW)

XBD3.9/55.6-DLGZ	33.3	0.44	2	1480	70	37
	55.6	0.39			78	
	66.7	0.34			75	
XBD5.9/55.6-DLGZ	33.3	0.66	3		70	55
	55.6	0.59			78	
	66.7	0.51			75	
XBD7.8/55.6-DLGZ	33.3	0.88	4		70	75
	55.6	0.78			78	
	66.7	0.69			75	
XBD9.8/55.6-DLGZ	33.3	1.1	5	70	90	
	55.6	0.98		78		
	66.7	0.86		75		
XBD11.8/55.6-DLGZ	33.3	1.32	6	70	110	
	55.6	1.18		78		
	66.7	1.03		75		