

MARINE ELECTRIC MOTOR

YE2 Series Three-Phase Asynchronous Motor

Introduction Frame number: Frame 80 ~ 355 Output : 0.75 ~ 375kW Duty : S1 Cooling : IC411 Synchronous speed: 3000, 1500, 1000r/min Rated voltage and frequency: 380v, 50Hz Effici...

- ISO9001 Supplier
- Class Certificate
- Export Supply



Key Highlights

Category	Marine Electric Motor
Standard	DIN
Weight / Size	% P.F Tst Tn Tst In Tax Tn dB (A) Synchronous speed 1000r/min YE2-90S-6 ...
Certificate	CCS/LR/DNV/KR

We can supply according to your requirement, drawings, class certificate needs, and delivery schedule.

Technical Specifications

Category	Marine Electric Motor	Model / SKU	YE2-Series-Three-Phase-Asynchronous-Motor
----------	-----------------------	-------------	---

		225S 4 356 286 149 60 140 18 53 225 400 350 450 0 8-Φ185 75 375 28 435 470 335 560 830 225M 2 311 55 110 16 49 400 825 4 , 6 60 140 18 53 855 250M 2 406 349 168 250 24 500 450 550 80 445 30 490 510 370 615 915 4 , 6 65 58 280S 2 457 368 190 280 85 485 35 550 580 410 680 985 4 , 6 75 20 67.5 280M 2 419 65 18 58 536 1035 4 , 6 75 20 67.5 315S 2 508 406 216 65 18 58 315 28 600 550 660 8-Φ24 6 120 570 45 635 645 530 845 1270 4 , 6 80 170 22 71 315M 2 457 65 140 18 58 680 1340 4 , 6 80 170 22 71 315L 2 508 65 140 18 58 680 4 , 6 80 170 22 71 355M 2 610 560 254 75 140 20 67.5 355 740 680 800 116 750 52 726 710 655 1010 1525 4 , 6 95 170 25 86 355L 2 630 75 140 20 67.5 4 , 6 95 170 25 86 V1 The motor of frame without feet,end-shield with flange (with through holes) Frame Poles Mounting Dimension Over Dimension D E F G M N P R S T AC AD HF L 80M 2,4,6 19 40 6 15.5 165 130 200 0 4-Φ12 3.5 165 140 220 335 90S 24 50 8 20 185 165 365 90L 400 100L 28 60 24 215 180 250 4-Φ45 4 196 180 300 420 112M 240 190 320 460 132S 38 80 10 33 265 230 300 270 210 380 540 132M 590 160M 42 110 12 37 300 250 350 0 4-Φ18 5 5 330 255 450 700 160L 740 180M 48 14 42.5 300 250 350 0 380 280 500 760 180L 800 200L 55 16 49 350 300 400 0 420 305 550 840 225S 4 60 140 18 53 400 350 450 0 8-Φ185 470 335 610 910 225M 2 55 no 16 49 905 4 , 6 60 140 18 53 935 250M 2 500 450 550 0 510 370 650 1015 4 , 6 65 58 280S 2 580 410 720 1110 4 , 6 75 20 67.5 280M 2 65 18 58 1150 4 , 6 75 20 67.5 315S 2 65 18 58 600 550 660 8-Φ24 6 645 530 900 1390 4 , 6 80 170 22 71 315M 2 65 140 18 58 1490 4 , 6 80 170 22 71 315L 2 65 140 18 58 1490 4 , 6 80 170 22 71 355M 2 75 140 20 67.5 740 680 800 710 655 1035 1675 4 , 6 95 170 25 86 355L 2 75 140 20 67.5 1675 4 , 6 95 170 25 86	
Certificate	CCS/LR/DNV/KR	Warranty	12 Months unless specified otherwise
Origin	China		

<p>CONTENTS</p> <ul style="list-style-type: none"> ■ Introduction ■ Features ■ Technical Data 380V 50Hz Type Output kW r/min Eff. % P.F Tst Tn Tst In Tax Tn dB (A) Synchronous speed 1500r/min YE2-80M-4 0.75 1390 79.6 0.76 2.3 6.4 2.3 56 YE2-90S-4 1.1 1390 81.4 0.77 2.3 6.6 2.3 59 YE2-90L-4 1.5 1390 82.8 0.78 2.3 6.7 2.3 59 YE2-100L1-4 2.2 1450 84.3 0.80 2.3 7.3 2.3 64 YE2-100L2-4 3 1450 85.5 0.81 2.3 7.5 2.3 64 YE2-112M-4 4 1440 86.6 0.81 2.3 7.5 2.3 65 YE2-132S-4 5.5 1440 87.7 0.82 2.0 7.5 2.3 71 YE2-132M-4 7.5 1440 88.7 0.83 2.0 7.3 2.3 71 YE2-160M-4 11 1460 89.8 0.83 2.0 7.4 2.3 73 YE2-160L-4 15 1460 90.6 0.84 2.0 7.5 2.3 73 YE2-180M-4 18.5 1470 91.2 0.85 2.0 7.6 2.3 76 YE2-180L-4 22 1470 91.6 0.85 2.1 7.7 2.3 76 YE2-200L-4 30 1476 92.3 0.85 2.1 7.1 2.3 76 YE2-225S-4 37 1481 92.7 0.86 2.1 7.3 2.3 78 YE2-225M-4 45 1480 93.1 0.86 2.1 7.3 2.3 78 YE2-250M-4 55 1480 93.5 0.86 2.1 7.4 2.3 79 YE2-280S-4 75 1480 94.0 0.87 2.1 6.8 2.3 80 YE2-280M-4 90 1480 94.2 0.88 2.1 6.9 2.3 80 YE2-315S-4 110 1463 94.5 0.89 2.1 6.9 2.2 88 YE2-315M-4 132 1463 94.7 0.89 2.1 6.9 2.2 88 YE2-315L1-4 160 1463 94.9 0.90 2.1 6.9 2.2 88 YE2-315L2-4 200 1463 95.1 0.90 2.1 6.9 2.2 88 YE2-355M-4 250 1485 95.1 0.90 2.0 6.9 2.2 95 YE2-355L-4 315 1485 95.1 0.90 2.0 6.9 2.2 95 YE2-3551-4 355 1485 95.1 0.89 1.7 6.5 2.2 102 YE2-3552-4 375 1485 95.1 0.88 1.7 6.5 2.2 102 ■ Type 	<ul style="list-style-type: none"> ■ Application ■ Technical Data 380V 50Hz Type Output kW r/min Eff. % P.F Tst Tn Tst In Tax Tn dB (A) Synchronous speed 3000r/min YE2-80M1-2 0.75 2825 77.4 0.82 2.3 6.8 2.3 62 YE2-80M2-2 1.1 2825 79.6 0.83 2.3 7.1 2.3 62 YE2-90S-2 1.5 2850 81.3 0.84 2.3 7.3 2.3 67 YE2-90L-2 2.2 2850 83.2 0.85 2.3 7.6 2.3 67 YE2-100L-2 3 2890 84.6 0.87 2.2 7.8 2.3 74 YE2-112M-2 4 2890 85.8 0.88 2.2 8.1 2.3 77 YE2-132S1-2 5.5 2900 87.0 0.88 2.2 8.2 2.3 79 YE2-132S2-2 7.5 2900 88.1 0.89 2.2 7.8 2.3 79 YE2-160M1-2 11 2930 89.4 0.89 2.2 7.9 2.3 81 YE2-160M2-2 15 2930 90.3 0.89 2.2 7.9 2.3 81 YE2-160L-2 18.5 2930 90.9 0.89 2.2 8.0 2.3 81 YE2-180M-2 22 2940 91.3 0.89 2.2 8.1 2.3 83 YE2-200L1-2 30 2955 92.0 0.89 2.0 7.5 2.3 84 YE2-200L2-2 37 2960 92.5 0.89 2.0 7.5 2.3 84 YE2-225M-2 45 2969 92.9 0.89 2.2 7.5 2.3 86 YE2-250M-2 55 2970 93.2 0.89 2.2 7.6 2.3 89 YE2-280S-2 75 2970 93.8 0.89 1.8 6.9 2.3 91 YE2-280M-2 90 2970 94.1 0.89 1.8 6.9 2.3 91 YE2-315S-2 110 2940 94.3 0.90 1.8 7.0 2.2 92 YE2-315M-2 132 2940 94.6 0.90 1.8 7.0 2.2 92 YE2-315L1-2 160 2940 94.8 0.91 1.8 7.1 2.2 92 YE2-315L2-2 200 2940 95.0 0.91 1.8 7.1 2.2 92 YE2-355M-2 250 2980 95.0 0.91 1.6 7.1 2.2 100 YE2-355L-2 315 2980 95.0 0.91 1.6 7.2 2.2 100 YE2-3551-2 355 2980 95.0 0.91 1.6 7.2 2.2 104 YE2-3552-2 375 2980 95.0 0.91 1.6 7.2 2.2 104 ■ Technical Data 380V 50Hz ■ Output kW
---	---

Introduction

Frame number: Frame 80 ~ 355

Output : 0.75 ~ 375kW

Duty : S1

Cooling : IC411

Synchronous speed: 3000, 1500, 1000r/min

Rated voltage and frequency: 380v, 50Hz



Efficiency level 3 (China GB18613-2012), Grade 3

Application

Energy saving applications where continuous or frequent duty is required. Such as blowers, pumps, etc.

Features

These series motors have many virtues, including beautiful profile, high efficiency and energy saving, insulation class F, the protective class is IP55, motor runs with low noise, little vibration and high reliability.

Technical Data 380V 50Hz

Type	Output kW	r/min	Eff. %	P.F	Tst Tn	Tst In	Tax Tn	dB (A)
Synchronous speed 3000r/min								
YE2-80M1-2	0.75	2825	77.4	0.82	2.3	6.8	2.3	62
YE2-80M2-2	1.1	2825	79.6	0.83	2.3	7.1	2.3	62
YE2-90S-2	1.5	2850	81.3	0.84	2.3	7.3	2.3	67
YE2-90L-2	2.2	2850	83.2	0.85	2.3	7.6	2.3	67
YE2-100L-2	3	2890	84.6	0.87	2.2	7.8	2.3	74
YE2-112M-2	4	2890	85.8	0.88	2.2	8.1	2.3	77
YE2-132S1-2	5.5	2900	87.0	0.88	2.2	8.2	2.3	79
YE2-132S2-2	7.5	2900	88.1	0.89	2.2	7.8	2.3	79
YE2-160M1-2	11	2930	89.4	0.89	2.2	7.9	2.3	81
YE2-160M2-2	15	2930	90.3	0.89	2.2	7.9	2.3	81
YE2-160L-2	18.5	2930	90.9	0.89	2.2	8.0	2.3	81
YE2-180M-2	22	2940	91.3	0.89	2.2	8.1	2.3	83
YE2-200L1-2	30	2955	92.0	0.89	2.0	7.5	2.3	84
YE2-200L2-2	37	2960	92.5	0.89	2.0	7.5	2.3	84
YE2-225M-2	45	2969	92.9	0.89	2.2	7.5	2.3	86
YE2-250M-2	55	2970	93.2	0.89	2.2	7.6	2.3	89
YE2-280S-2	75	2970	93.8	0.89	1.8	6.9	2.3	91
YE2-280M-2	90	2970	94.1	0.89	1.8	6.9	2.3	91
YE2-315S-2	110	2940	94.3	0.90	1.8	7.0	2.2	92
YE2-315M-2	132	2940	94.6	0.90	1.8	7.0	2.2	92
YE2-315L1-2	160	2940	94.8	0.91	1.8	7.1	2.2	92
YE2-315L2-2	200	2940	95.0	0.91	1.8	7.1	2.2	92
YE2-355M-2	250	2980	95.0	0.91	1.6	7.1	2.2	100
YE2-355L-2	315	2980	95.0	0.91	1.6	7.2	2.2	100
YE2-355L1-2	355	2980	95.0	0.91	1.6	7.2	2.2	104
YE2-355L2-2	375	2980	95.0	0.91	1.6	7.2	2.2	104

Technical Data 380V 50Hz

Type	Output kW	r/min	Eff. %	P.F	Tst Tn	Tst In	Tax Tn	dB (A)
Synchronous speed 1500r/min								
YE2-80M-4	0.75	1390	79.6	0.76	2.3	6.4	2.3	56
YE2-90S-4	1.1	1390	81.4	0.77	2.3	6.6	2.3	59
YE2-90L-4	1.5	1390	82.8	0.78	2.3	6.7	2.3	59
YE2-100L1-4	2.2	1450	84.3	0.80	2.3	7.3	2.3	64
YE2-100L2-4	3	1450	85.5	0.81	2.3	7.5	2.3	64
YE2-112M-4	4	1440	86.6	0.81	2.3	7.5	2.3	65
YE2-132S-4	5.5	1440	87.7	0.82	2.0	7.5	2.3	71
YE2-132M-4	7.5	1440	88.7	0.83	2.0	7.3	2.3	71
YE2-160M-4	11	1460	89.8	0.83	2.0	7.4	2.3	73
YE2-160L-4	15	1460	90.6	0.84	2.0	7.5	2.3	73
YE2-180M-4	18.5	1470	91.2	0.85	2.0	7.6	2.3	76
YE2-180L-4	22	1470	91.6	0.85	2.1	7.7	2.3	76
YE2-200L-4	30	1476	92.3	0.85	2.1	7.1	2.3	76

YE2-225S-4	37	1481	92.7	0.86	2.1	7.3	2.3	78
YE2-225M-4	45	1480	93.1	0.86	2.1	7.3	2.3	78
YE2-250M-4	55	1480	93.5	0.86	2.1	7.4	2.3	79
YE2-280S-4	75	1480	94.0	0.87	2.1	6.8	2.3	80
YE2-280M-4	90	1480	94.2	0.88	2.1	6.9	2.3	80
YE2-315S-4	110	1463	94.5	0.89	2.1	6.9	2.2	88
YE2-315M-4	132	1463	94.7	0.89	2.1	6.9	2.2	88
YE2-315L1-4	160	1463	94.9	0.90	2.1	6.9	2.2	88
YE2-315L2-4	200	1463	95.1	0.90	2.1	6.9	2.2	88
YE2-355M-4	250	1485	95.1	0.90	2.0	6.9	2.2	95
YE2-355L-4	315	1485	95.1	0.90	2.0	6.9	2.2	95
YE2-3551-4	355	1485	95.1	0.89	1.7	6.5	2.2	102
YE2-3552-4	375	1485	95.1	0.88	1.7	6.5	2.2	102

Technical Data 380V 50Hz

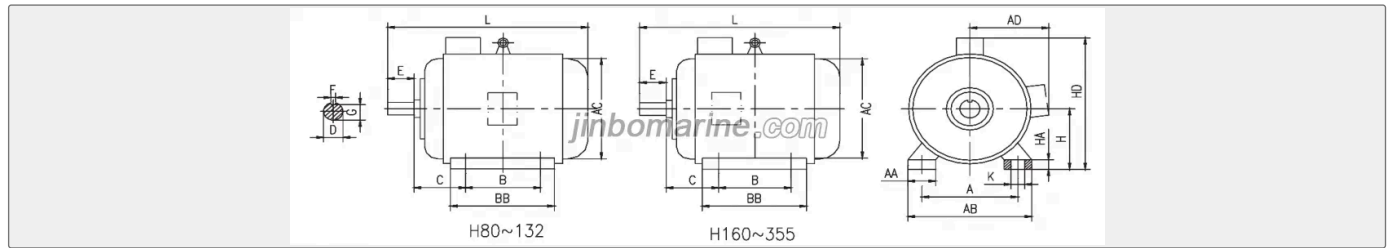
Type	Output kW	r/min	Eff. %	P.F	Tst Tn	Tst In	Tax Tn	dB (A)
Synchronous speed 1000r/min								
YE2-90S-6	0.75	910	75.9	0.71	2.0	5.8	2.1	57
YE2-90L-6	1.1	910	78.1	0.72	2.0	5.9	2.1	57
YE2-100L-6	1.5	950	79.8	0.72	2.0	5.9	2.1	61
YE2-112M-6	2.2	940	81.8	0.72	2.0	6.2	2.1	65
YE2-132S-6	3	960	83.3	0.72	2.0	6.4	2.1	69
YE2-132M1-6	4	960	84.6	0.74	2.0	6.6	2.1	69
YE2-132M2-6	5.5	960	86.0	0.75	2.0	6.8	2.1	69
YE2-160M-6	7.5	970	87.2	0.78	2.0	6.8	2.1	73
YE2-160L-6	11	970	88.7	0.79	2.0	6.9	2.1	73
YE2-180L-6	15	970	89.7	0.82	2.0	7.3	2.1	73
YE2-200L1-6	18.5	980	90.4	0.80	2.0	7.2	2.1	73
YE2-200L2-6	22	980	90.9	0.81	2.0	7.3	2.1	73
YE2-225M-6	30	985	91.7	0.82	2.0	6.8	2.1	74
YE2-250M-6	37	980	92.2	0.83	2.0	7.0	2.1	76
YE2-280S-6	45	980	92.7	0.85	2.0	7.2	2.0	78
YE2-280M-6	55	980	93.1	0.86	2.0	7.2	2.0	78
YE2-315S-6	75	970	93.7	0.84	2.0	6.5	2.0	83
YE2-315M-6	90	970	94.0	0.85	2.0	6.6	2.0	83
YE2-315L1-6	110	970	94.3	0.85	2.0	6.6	2.0	83
YE2-315L2-6	132	970	94.6	0.86	2.0	6.6	2.0	83
YE2-355M1-6	160	990	94.8	0.86	2.0	6.7	2.0	85
YE2-355M2-6	200	990	95.0	0.86	2.0	6.8	2.0	85
YE2-355L-6	250	990	95.0	0.86	2.0	6.8	—	85
YE2-355-6	315	990	95.0	0.86				

Conventional mounting type and suitable frame size are given in following table (with "v")

Frame size	Basic type			Derived type												
	B3	B5	B35	V1	V3	V5	V6	B6	B7	B8	V15	V36	B14	B34	V18	
80 ~112	V	V	V	V	V	V	V	V	V	V	V	V	V	V	V	
132 ~160	V	V	V	V	V	V	V	V	V	V	V	V	—	—	—	
180 ~280	V	V	V	V	—	—	—	—	—	—	—	—	—	—	—	

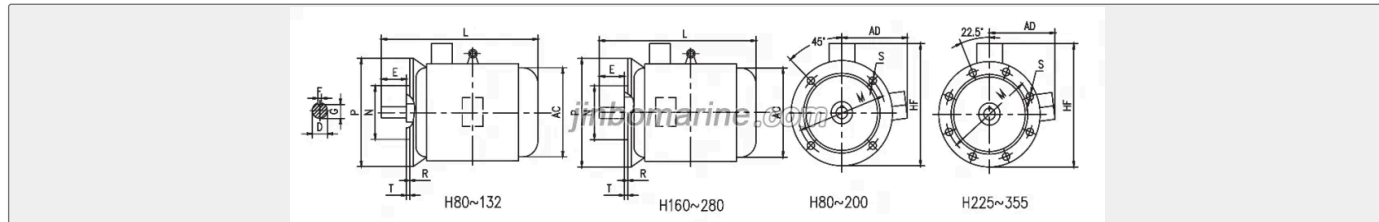
315 ~ 355	V	—	V	V	—	—	—	—	—	—	—	—	—	—	—	—	—	—
-----------	---	---	---	---	---	---	---	---	---	---	---	---	---	---	---	---	---	---

B3 The motor of frame with feet, end-shield without flange



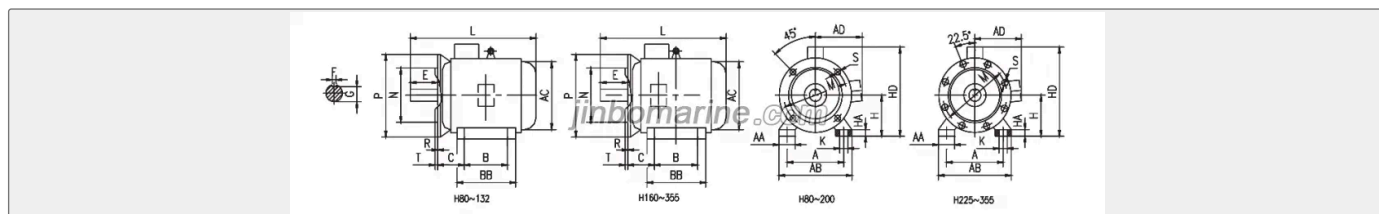
Frame	Poles	Mounting Dimension									Over Dimension										
		A	B	C	D	E	F	G	H	K	AA	BB	HA	AB	AC	AD	HD	L			
80M	2,4,6	125	100	50	19	40	6	15.5	80	10	34	130	10	165	165	140	220	295			
90S		140	100	56	24	50	8	20	90			36	140	12	180	185	165	260	360		
90L		125	165										390								
100L		160	140	63	28	60							176	14	200	196	180	270	385		
112M		190		70									112							45	180
132S		216	178	89	38	80	10	33	132				186	18	262	270	210	345	490		
132M		224											540								
160M		254	210	108	42	110	12	37	160	14.5			260	20	320	330	255	420	670		
160L		254											304							700	
180M		279	241	121	48			14	42.5	180			311	22	355	380	280	455	740		
180L		279											349							790	
200L		318	305	133	55		16	49	200	18.5	70	369	25	395	420	305	505	790			
225S		4	356	286	149	60	140	18	53	225			75	375	28	435	470	335	560	830	
225M		2				311	55	110	16											49	400
	4,6	60				140	18	53													855
250M	2	406	349	168	60	140	18	53	250	24	80	445	30	490	510	370	615	915			
	4,6				65														58		
280S	2	457	368	190															985		
	4,6				75															20	67.5
280M	2	419			65		18	58											1035		
	4,6				75															20	67.5
315S	2	508	406	216	65		18	58	315	28	120	570	45	635	645	530	845	1270			
	4,6				80														170	22	71
315M	2	457			65		18	58				680							1340		
	4,6				80															170	22
315L	2	508			65		18	58				680									
	4,6				80															170	22
355M	2	610	560	254	75	140	20	67.5	355			116	750	52	726	710	655	1010	1525		
	4,6				95															170	25
355L	2	630			75	140	20	67.5				750							1526		
	4,6				95															170	25

B5 The motor of frame without feet, end-shield with flange (with through holes)



Frame	Poles	Mounting Dimension										Over Dimension			
		D	E	F	G	M	N	P	R	S	T	AC	AD	HF	L
80M	2,4,6	19	40	6	15.5	165	130	200	0	4-Φ12	3.5	165	140	220	295
90S		24	50	8	20							185	165		
90L															390
100L		28	60		24	215	180	250		4-Φ14.5	4	196	180	245	385
112M												240	190	265	420
132S		38	80	10	33	265	230	300	0			270	210	315	490
132M															540
160M		42	110	12	37	300	250	350	0	4-Φ18.5	5	330	255	385	670
160L															
180M		48		14	42.5							380	280	430	740
180L														790	
200L	55		16	49	350	300	400	0			420	305	480	790	
225S	4	60	140	18	53	400	350	450	0	8-Φ18.5		470	335	535	830
225M	2	55	110	16	49										
	4,6	60	140	18	53									855	
250M	2					500	450	550	0			510	370	595	915
	4,6	65			58										
280S	2														
	4,6	75		20	67.5										10.5
280M	2	65		18	58										
	4,6	75		20	67.5										

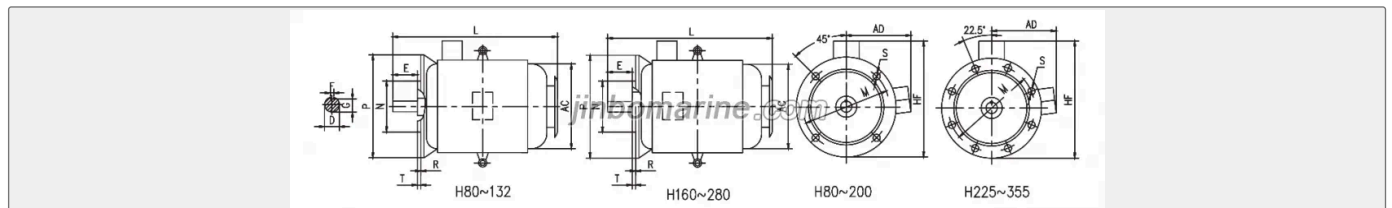
B35 The motor of frame with feet, end-shield with flange (with through holes)



Frame	Poles	Mounting Dimension														Over Dimension						
		A	B	C	D	E	F	G	H	K	M	N	P	R	S	T	A	B	H	A	A	A

80M	2.4, 6	125	100	50	19	40	6	15.5	80	10	165	130	200	0	4- Φ12	3.5	34	130	10	165	165	140	220	295		
90S		140		56	24	50	8	20	90										36	140	12	180	185	165	260	360
90L		125																		165						390
100L		160	140	63	28	60			24	100	12	215	180	250	0	4- Φ45	4	40	176	14	200	196	180	270	385	
112M		190		70					112										45	180	15	230	240	190	300	420
132S		216		89	38	80	10	33	132			265	230	300					55	186	18	262	270	210	345	490
132M		178																		224						540
160M		254	210	108	42	110	12	37	160	15	300	250	350	0	4- Φ18 5			5	65	260	20	320	330	255	420	670
160L		254																		304						700
180M	279	241	121	48			14	42.5	180										70	311	22	355	380	280	455	740
180L	279																			349						790
200L	318	305	133	55			16	49	200	19	350	300	400						70	379	25	395	420	305	505	790
225S	4	356	286	149	60	140	18	53	225		400	350	450	0	8- Φ18 5		75	375	28	435	470	335	560	830		
225M	2		311		55	110	16	49												400						825
	4, 6				60	140	18	53																		855
250M	2	406	349	168					250	24	500	450	550						80	445	30	490	510	370	615	915
	4, 6				65			58																		
280S	2	457	368	190					280										85	485	35	550	580	410	680	985
	4, 6				75			20	67.5																	
280M	2		419		65			18	58											536						1035
	4, 6				75			20	67.5																	
315S	2	508	406	216	65			18	58	315	28	600	550	660			8- Φ24	6	120	570	45	635	645	530	845	1270
	4, 6				80	170	22	71																		
315M	2		457		65	140	18	58												680						1340
	4, 6				80	170	22	71																		
315L	2		508		65	140	18	58													680					
	4, 6				80	170	22	71																		
355M	2	610	560	254	75	140	20	67.5	355		740	680	800				116	750	52	726	710	655	1010	1525		
	4, 6				95	170	25	86																		
355L	2		630		75	140	20	67.5																		
	4, 6				95	170	25	86																		

V1 The motor of frame without feet, end-shield with flange (with through holes)



Frame	Poles	Mounting Dimension										Over Dimension			
		D	E	F	G	M	N	P	R	S	T	AC	AD	HF	L

80M	2,4,6	19	40	6	15.5	165	130	200	0	4-Φ12	3.5	165	140	220	335			
90S		24	50	8	20	165	130	200	0	4-Φ12		3.5	185	165	220	365		
90L																	400	
100L		28	60	10	24	215	180	250	0	4-Φ45	4	196	180	300	420			
112M														240	190	320	460	
132S		38	80	10	33	265	230	300	0	4-Φ45	4	270	210	380	540			
132M					590													
160M		42	110	12	37	300	250	350	0	4-Φ18 5	5	330	255	450	700			
160L					740													
180M					48	14	42.5	300	250			350	0	4-Φ18 5	5	380	280	500
180L																		
200L	55				16	49	350	300	400			0	4-Φ18 5	5	420	305	550	840
225S	4				60	140	18	53	400			350	450	0	8-Φ185	470	335	610
225M	2	55	no	16	49	400	350	450	0	8-Φ185	470	335	610	905				
	4, 6	60	140	18	53													935
250M	2	60	140	18	53	500	450	550	0	8-Φ185	470	335	610	1015				
	4, 6													65		58		
280S	2	60	140	18	53	500	450	550	0	8-Φ185	470	335	610	1110				
	4, 6													75		20	67.5	
280M	2	60	140	18	53	500	450	550	0	8-Φ185	470	335	610	1150				
	4, 6													75		20	67.5	
315S	2	65	170	18	58	600	550	660	0	8-Φ24	6	645	530	900		1390		
	4, 6	80		22	71													
315M	2	65	140	18	58	600	550	660	0	8-Φ24	6	645	530	900	1490			
	4, 6	80	170	22	71													
315L	2	65	140	18	58	600	550	660	0	8-Φ24	6	645	530	900	1490			
	4, 6	80	170	22	71													
355M	2	75	140	20	67.5	740	680	800	0	8-Φ24	6	710	655	1035	1675			
	4, 6	95	170	25	86													
355L	2	75	140	20	67.5	740	680	800	0	8-Φ24	6	710	655	1035	1675			
	4, 6	95	170	25	86													