

Jinbo Marine

Marine & Offshore Equipment Datasheet

PRODUCT DATASHEET

MARINE ELECTRIC MOTOR

YZ—H Three Phase Induction Marine Electronic Motor

Introduction YZ-H series marine use three phase induction motors for hoisting are designed and manufactured according to GB755 'Rotating electrical machines-Rating and Performance' , GB/ T7060 'General specificati...

ISO9001 Supplier

Class Certificate

Export Supply

**Key Highlights**

Category	Marine Electric Motor
Standard	DIN
Material	IEC60034 Rotary motor IEC60068 Testing process of basic environment IEC6...
Weight / Size	They have the features of excellent performance, small size, low noise, ...
Certificate	IR GL DNV KR

We can supply according to your requirement, drawings, class certificate needs, and delivery schedule.

Technical Specifications

Category	Marine Electric Motor	Model / SKU	YZ-H-Three-Phase-Induction-Marine-Electronic-Motor
Standard	DIN	Material	IEC60034 Rotary motor IEC60068 Testing process of basic environment IEC60072 Mounting dimensions and power of rotary motor IEC60092 Marine electrical devices (equipment) Rules for the construction of sea-going steel ships Working Conditions:
Weight / Size	They have the features of excellent performance, small size, low noise, reliable operation and convenient maintenance, etc.	Certificate	IR GL DNV KR
Warranty	12 Months unless specified otherwise	Origin	China

CONTENTS

- Introduction
- Working Conditions:
- Type
- Rated power (kW)
- This series is in accordance with the following standard:
- Main Technical Data of single speed motors
- Duty S2-min
- Rated speed r/min

Introduction

YZ-H series marine use three phase induction motors for hoisting are designed and manufactured according to GB755 'Rotating electrical machines-Rating and Performance' , GB/ T7060 'General specifications for rotary electrical machines in ships' and JB/T7597 'Specification for YZ-H marine three phase induction motor for hoisting in ships'. They have the features of excellent performance, small size, low noise, reliable operation and convenient maintenance, etc. They are suitable for short time rationed electrical dragging on boats for deck machines, such as anchoring machines, winch machines and winch etc. They can also provide power for cargo lift that does not operate frequently. This series motors are also suitable for the following standards and specifications.

This series is in accordance with the following standard:

- IEC60034 Rotary motor
- IEC60068 Testing process of basic environment
- IEC60072 Mounting dimensions and power of rotary motor
- IEC60092 Marine electrical devices (equipment)
- Rules for the construction of sea-going steel ships

Working Conditions:

- Ambient temperature : -25~+45°C ;
- Shock, Vibration : Exist ;
- Periodical transverse shaking : ±22.5° ;
- Ramp : 15° ;

Altitude : 0m ;

Longitudinal ramp : 10° ;

Relative humidity of air : ≤ 95% ;

Frozen dew, salt dew, oil dew : Exist .

Main Technical Data of single speed motors

Type	Duty S2-min	Rated power (kW)		Rated speed r/min		Rated current (A)		DC. Brake		
		380V 50Hz	440V 60Hz	380V 50Hz	440V 60Hz	380V 50Hz	440V 60Hz	Voltage (V)	Current A	Brake torque N • m
YZ112S-4-H	30	1.5	1.8	1360	1632	4.3	4.5	110	1.37	33
YZ112M-4-H	30	2.2	2.5	1360	1630	6.0	5.92	110	1.37	33
YZ112L-4-H	30	3.7	4	1360	1630	9.6	8.98	110	1.37	33
YZ112S-6-H	30	1.1	1.2	890	1068	3.5	3.31	110	1.37	33
YZ112M-6-H	30	1.5	1.8	890	1068	4.65	4.82	110	1.37	33
YZ112L-6-H	30	2.2	2.5	890	1068	6.6	6.51	110	1.37	33
YZ132M1-4-H	30	5.5	6.3	1356	1670	13.4	13.3	110	1.56	72
YZ132M2-4-H	30	7.5	8.5	1360	1690	18.5	17.88	110	1.56	72
YZ132S-6T	30	3.7	4	940	1130	10.5	9.85	110	1.56	72
YZ132M-6-H	30	5.5	6.3	940	1130	15.3	15.10	110	1.56	72
YZ160S-6-H	30	7.5	8.5	940	1140	19.73	19.31	110	1.61	160
YZ160L-6-H	30	11	13	930	1130	26.8	27.34	110	1.61	160
YZ180L-6T	30	15	18.5	960	1152	36	38.42	110	2.24	203
YZ200M-6-H	30	18.5	22	950	1140	43.9	45.13	110	2.23	260
YZ225S-6T	30	22	25	950	1140	50.97	50.03	110	2.16	399

Main Technical Data of double speed motors

Type	Duty S2-min	Rated power (kW)		Rated speed r/min		Rated current (A)		DC. Brake		
		380V 50Hz	440V 60Hz	380V 50Hz	440V 60Hz	380V 50Hz	440V 60Hz	Voltage (V)	Current A	Brake torque N • m
YZ132M-4/12-H	30/10	3/1.1	3.5/1.2	1360/430	1660/530	8.3/7.6	8.4/8.6	110	1.56	72
YZ132L-4/12-H	30/10	4/1.5	4.5/1.7	1400/430	1700/530	10.3/9.1	10/8.9	110	1.56	72
YZ160L-4/12-H	30/10	6.3/2.2	7.5/2.5	1394/426	1690/530	15.4/11.9	16.2/11.7	110	1.61	160
YZ180L-4/12-H	30/10	8.5/3.5	10/4.0	1400/438	1690/520	19/18	20.5/17.7	110	2.24	203
YZ180L-4/16-H	30/15	11/3.0	13/3.5	1424/328	1742/380	24/16	26.8/16.7	110	2.24	203
YZ200M-4/16-H	30/15	15/4.0	17/4.5	1420/340	1740/400	32.8/24.1	33.2/23.4	110	2.23	260
YZ200L-4/16-H	30/15	18.5/5.5	22/6.3	1420/340	1740/410	0.4/32.6	42.4/32.3	110	2.23	260

Type	Duty S2-min	Rated power (kW)		Rated speed r/min		Rated current (A)		DC. Brake		
		380V 50Hz	440V 60Hz	380V 50Hz	440V 60Hz	380V 50Hz	440V 60Hz	Voltage (V)	Current A	Brake torque N • m

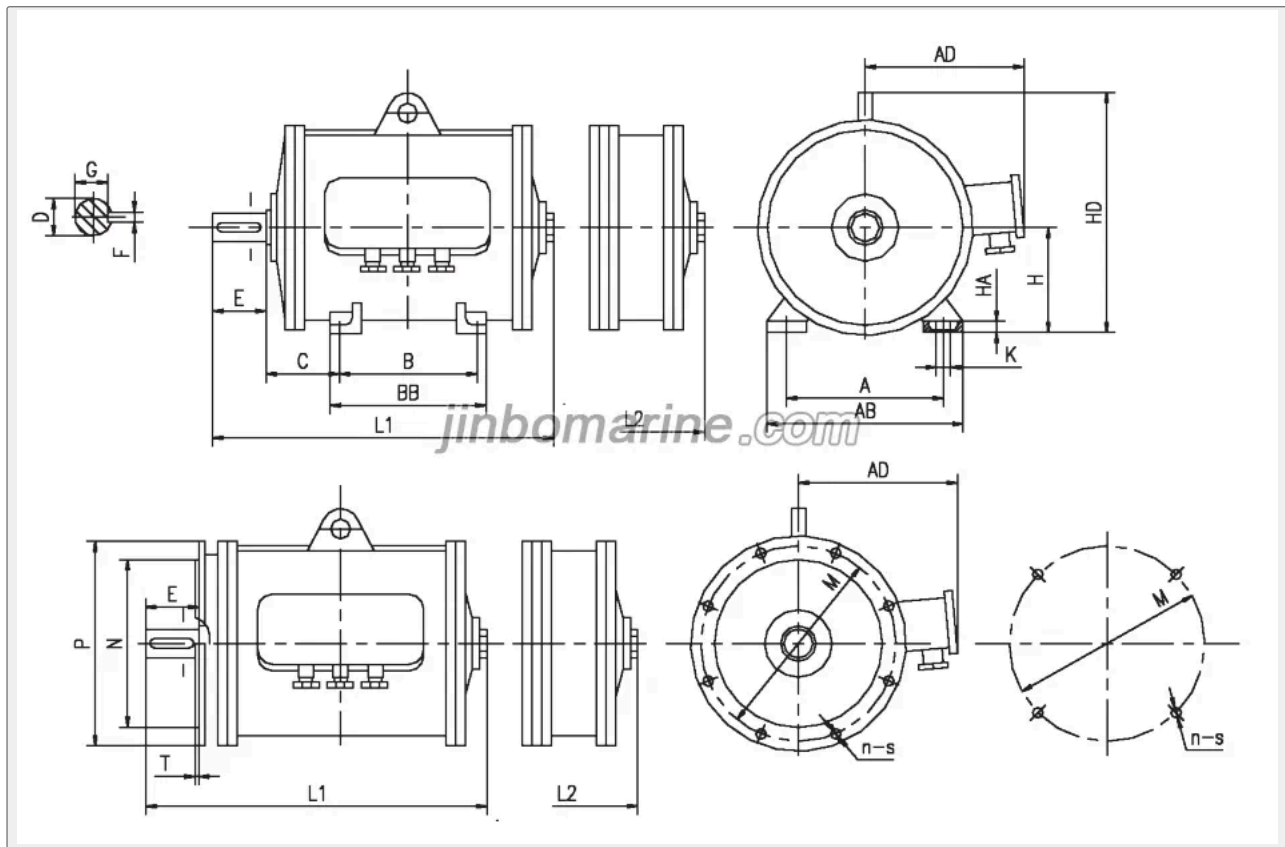
Main Technical Data of Three Speed Motors

YZ200S-4/8/16-H	10/30/5	9	10	21.4	20.5	1435	1738	110	2.23	260
		9	10	24.7	23.7	684	837			
		4.2	4.7	37.3	36.4	324	406			
YZ200L-4/8/16-H		12.5	14	29.3	28.4	1437	1733			
		12.5	14	34.3	33.2	689	840			
		5.7	6.5	49.5	49.4	330	410			
YZ225S-4/8/16-H		16.8	19	38.9	38.0	1421	1723		2.16	399
		16.8	19	46.2	45.0	683	835			
		8	9.1	67.6	67.9	333	413			
YZ225L-4/8/16-H		22.5	25	51.5	49.4	1422	1725			
		22.5	25	60.3	57.9	686	838			
		10.6	12	85.6	86.3	334	400			
YZ250S-4/8/16-H		30	33.5	63.8	61.6	1410	1713		2.65	876
		30	33.5	71.3	68.7	680	832			
		14.5	16	105.5	103.5	336	415			
YZ250M-4/8/16-H		42	46	86.3	81.6	1410	1707			
		42	46	95	89.8	676	830			
		20	22	112.6	110	334	414			
YZ280S-4/8/16-H		56	63	114	111.2	1415	1717		2.45	1550
		56	63	120.6	117.2	694	844			
		27	30	147.5	145	345	423			
YZ280L-4/8/16-H		75	84	154	149	1427	1729			
		75	84	161.5	156.2	692	843			
		36	40	182	179.5	345	423			

Main Technical Data of Improvement Motors

Type	Duty S2-min	Rated power (kW)		Rated speed (r/min)		Rated current (A)		DC. Brake		
		380V 50Hz	440V 60Hz	380V 50Hz	440V 60Hz	380V 50Hz	440V 60Hz	Voltage (V)	Current (A)	Brake torque N.m
YZ112S-4-H	30	1.5	1.8	1360	1632	4.3	4.5	110	1.37	33
YZ112M-4-H	30	2.2	2.5	1360	1630	6.0	5.92	110	1.37	33
YZ112L-4-H	30	3.7	4	1360	1630	9.6	8.98	110	1.37	33
YZ112S-6-H	30	1.1	1.2	890	1068	3.5	3.31	110	1.37	33
YZ112M-6-H	30	1.5	1.8	890	1068	4.65	4.82	110	1.37	33
YZ112L-6-H	30	2.2	2.5	890	1068	6.6	6.51	110	1.37	33
YZ132M1-4-H	30	5.5	6.3	1356	1670	13.4	13.25	110	1.86	72
YZ132M2-4-H	30	7.5	8.5	1360	1690	18.5	17.88	110	1.86	72
YZ132S-6-H	30	3.7	4	940	1130	10.5	9.85	110	1.86	72
YZ132M-6-H	30	5.5	6.3	940	1130	15.3	15.10	110	1.86	72
YZ132M-4/12-H	30/10	3/1.1	3.5/1.2	1360/430	1660/530	8.4/7.6	8.4/7.1	110	1.86	72
YZ132L-4/12-H	30/10	4/1.5	4.5/1.7	1400/430	1700/530	10.3/9.1	10/9	110	1.86	72

Overall and Mounting Dimensions



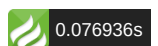
Single&Double Speed Motors

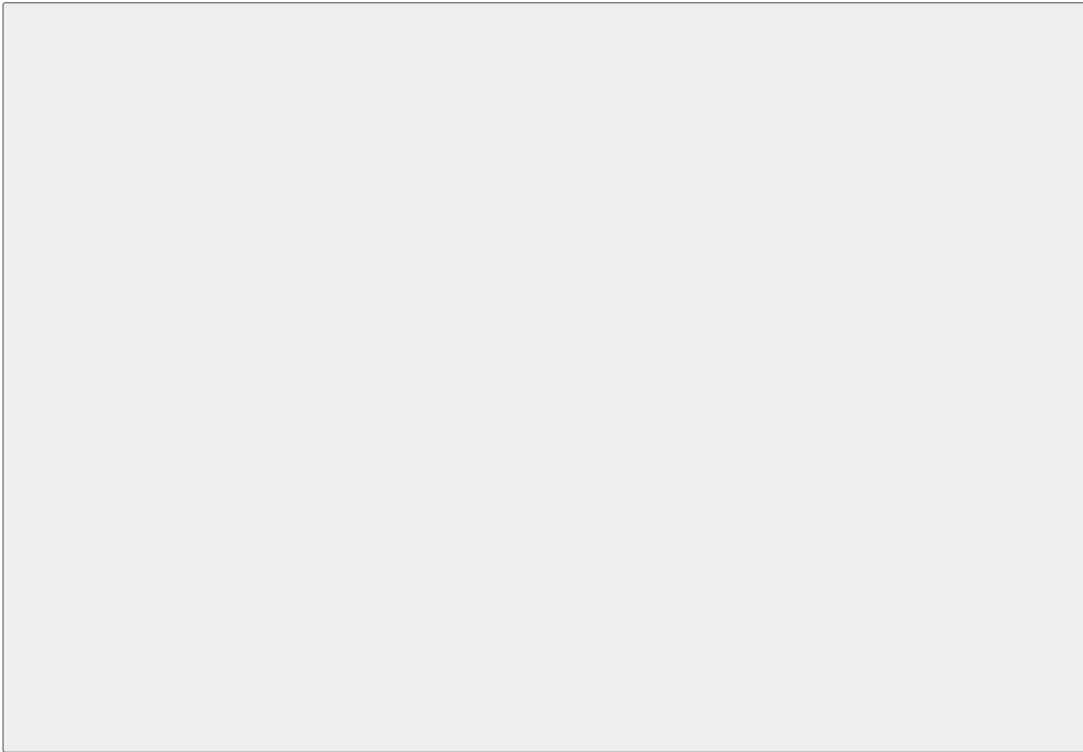
Frame Size	Frame Mounting Dimensions													Overall Dimensions								Weight (kg)			
	A	B	C	D	E	F	G	H	K	M	N	P	R	S	T	n	AB	AD	BB	HA	HD	LI	L2	LI	L2
112S	190	114	70	28	60	8	24	112	12	265	230	300	0	15	4	4	235	215	152			315	440	51	73
112M	190	140	70	28	60	8	24	112	12	265	230	300	0	15	4	4	235	215	178	12	282	340	465	54	74
112L	190	159	70	28	60	8	24	112	12	265	230	300	0	15	4	4	235	215	197			360	490	60	86
132S	216	140	89	38	80	10	33	132	12	265	230	300	0	15	4	4	259	225	207			425	545	63	99
132M	216	178	89	38	80	10	33	132	12	265	230	300	0	15	4	4	259	225	218	15	325	455	590	85	122
132L	216	203	89	38	80	10	33	132	12	265	230	300	0	15	4	4	259	225	243			485	615	86	122
160S	254	178	108	42	110	12	37	160	15	300	250	350	0	19	5	4	303	258	226			510	650	120	145
160L	254	254	108	42	110	12	37	160	15	300	250	350	0	19	5	4	303	258	302			590	740	150	175
180L	279	279	121	48	110	14	42.5	180	15	350	300	400	0	19	5	4	341	275	342	370		660	810	220	260
200M	318	267	133	48	110	14	42.5	200	19	400	350	450	0	19	5	8	385	300	337	20	515	660	810	240	330
200L	318	305	133	48	110	14	42.5	200	19	400	350	450	0	19	5	8	385	300	337			706	846	295	380
225S	356	286	149	55	110	16	49	225	19	500	450	550	0	19	5	8	435	325	386	568		730	890	325	426

Three Speed Motors

Frame Size	Frame Mounting Dimensions													Overall Dimensions								Weight(kg)		
	A	B	C	D	E	F	G	H	K	M	N	P	S	T	n	AB	AD	BB	HA	HD	LI	L2	LI	L2
200S	318	228	133	48	110	14	42.5	200	19	350	300	400	19	5	4	398	300	338			660	790	249	335
200L	318	305	133	48	110	14	42.5	200	19	350	300	400	19	5	4	398	300	418	20	518	740	870	280	385
225S	356	286	149	55	110	16	49	225	19	400	350	450	18	5	4	436	325	386			765	925	330	405
225L	356	356	149	55	110	16	49	225	19	400	350	450	18	5	4	436	325	456	578		835	995	390	465
250S	406	311	168	65	140	18	58	250	24	500	450	550	18	5	8	506	400	420			845	1030	600	690
250M	406	349	168	65	140	18	58	250	24	500	450	550	18	5	8	506	400	458	628		880	1060	700	850
280S	457	368	190	75	140	20	67.5	280	24	500	450	550	18	5	8	557	430	478	23		910	1125	800	880
280L	457	457	190	75	140	20	67.5	280	24	500	450	550	18	5	8	557	430	567	698		1000	1215	1010	1200

Improvement Motors





Mounting And Overall Dimensions

Frame Size	A	B	C	D	E	F	G	GD	H	K	M	N	P	S	T	n	AB	AC	AD	BB	HA	HD
112S		114																		152		
112M	190	140	70	28	60	8	24	7	112								226	215	215	197	15	270
112L		159																				
132S		140								12	265	230	300	15	4	4						
132M	216	178	89	38	80	10	33	8	132								260	260	235	243	18	315
132L		203																				