

Jinbo Marine

Marine & Offshore Equipment Datasheet

PRODUCT DATASHEET

TURNBUCKLE

DIN 1480 Turnbuckles

Main Specification Turnbuckle usually Forged, Free forged and Casting. The surface of turnbuckle original color, galvanised,hot galvanized Material is 45# Steel, Q235 Size Table ...

ISO9001 Supplier

Class Certificate

Export Supply



Key Highlights

Category	Turnbuckle
Standard	DIN
Material	45# Steel, Q235
Weight / Size	The surface of turnbuckle original color, galvanised,hot galvanized Mate...
Certificate	ABS, LR, BV, DNVGL, NK, KR, IRS, RMRS, CCS

We can supply according to your requirement, drawings, class certificate needs, and delivery schedule.

Technical Specifications			
Category	Turnbuckle	Model / SKU	DIN-1480-Turnbuckles
Standard	DIN	Material	45# Steel, Q235
Weight / Size	The surface of turnbuckle original color, galvanised,hot galvanized Material is 45# Steel, Q235 Size Table Dimension Permissible Load weight kg/100pcs L1 m L2 b di da i D mm(inch) kg N mm mm mm mm mm mm mm M6 230 2250 7.8 110 10 60 53 10 20 4.5 M8 418 4100 14.8 110 14 60 55 12 26 6.5 M10 663 6500 29.4 125 20 65 60 14 30.5 8 M12 948 9300 36.3 125 21 75 70 18 37.5 10.5 M16 1804 17700 91 170 27 100 90 22 48 13 M20 2752 27000 156 200 34 115 100 25 51 20 M24 3996 39200 325 255 39 140 130 28 66 27 M30 6371 62500 415 255 45 145 130 35 83 31 M32 6585 64600 595 295 55 160 150 36.5 88 33 M36 9276 91000 745 295 55 160 150 44 104 40 M38 9572 93900 1076 330 63 185 170 42 104 39	Surface	galvanized
Certificate	ABS, LR, BV, DNVGL, NK, KR, IRS, RMRS, CCS	Warranty	12 Months unless specified otherwise
Origin	China		

CONTENTS	<ul style="list-style-type: none"> ■ Main Specification ■ Size Table
-----------------	--

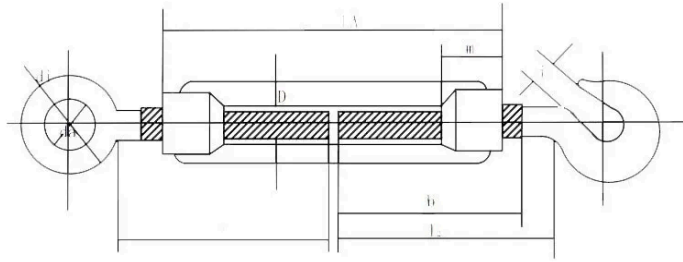
Main Specification

Turnbuckle usually Forged, Free forged and Casting.

The surface of turnbuckle original color, galvanised,hot galvanized

Material is 45# Steel, Q235

Size Table



Dimension	Permissible Load		weight kg/100pcs	L1	m	L2	b	di	da	i
	k g	N		mm	mm	mm	mm	mm	mm	mm
M6	230	2250	7.8	110	10	60	53	10	20	4.5
M8	418	4100	14.8	110	14	60	55	12	26	6.5
M10	663	6500	29.4	125	20	65	60	14	30.5	8
M12	948	9300	36.3	125	21	75	70	18	37.5	10.5
M16	1804	17700	91	170	27	100	90	22	48	13
M20	2752	27000	156	200	34	115	100	25	51	20
M24	3996	39200	325	255	39	140	130	28	66	27
M30	6371	62500	415	255	45	145	130	35	83	31
M32	6585	64600	595	295	55	160	150	36.5	88	33

M36	9 2 7 6	91 00 0	745	295	55	160	150	44	104	40
M38	9 5 7 2	93 90 0	1076	330	63	185	170	42	104	39