

# Jinbo Marine

Marine &amp; Offshore Equipment Datasheet

PRODUCT DATASHEET

## RUDDER STOCK SEAL

# DMB Type Rudder Stock Sealing Apparatus

ISO9001 Supplier

Class Certificate

Export Supply

Product Advantage This rudder printle sealing apparatus is compact in structure and easy to be maintained.It is suitable when the axial size is small. Technical Specification ...



### Key Highlights

Category	Rudder Stock Seal
Standard	EN
Weight / Size	Product Advantage This rudder printle sealing apparatus is compact in st...
Certificate	ABS, LR, BV, DNVGL, NK, KR, IRS, RMRS, CCS

We can supply according to your requirement, drawings, class certificate needs, and delivery schedule.

### Technical Specifications

Category	Rudder Stock Seal	Model / SKU	DMB-Type-Rudder-Stock-Sealing-Apparatus
Standard	EN	Weight / Size	Product Advantage This rudder printle sealing apparatus is compact in structure and easy to be maintained.It is suitable when the axial size is small.
Certificate	ABS, LR, BV, DNVGL, NK, KR, IRS, RMRS, CCS	Warranty	12 Months unless specified otherwise
Origin	China		

#### CONTENTS

 Product Advantage

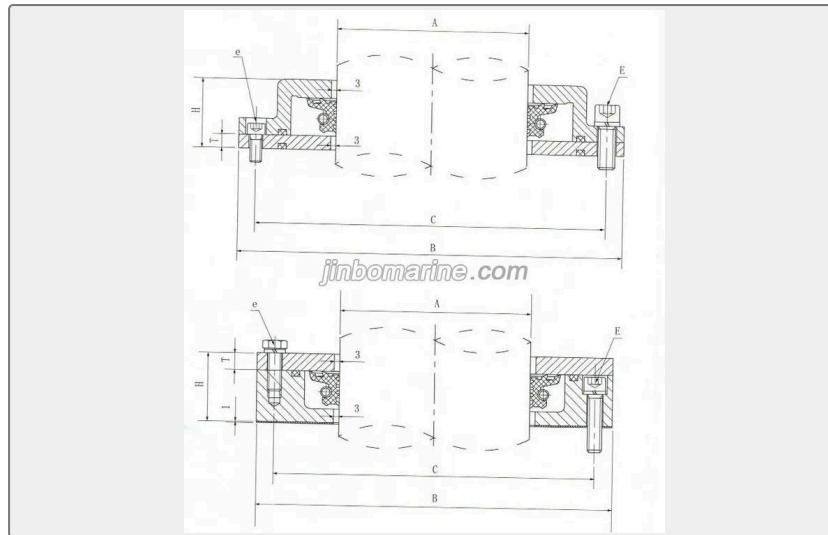
 Technical Specification

## Product Advantage

This rudder printle sealing apparatus is compact in structure and easy to be maintained.It is suitable when the axial size is small.



## Technical Specification



Specification	Dimensions (mm)							Weight (kg)
	A	B	C	E	H	T	e	
80	65/70/75/80	200	225	4-M10×45	56	10	4-M10×25	13
100	85/90/95/100	220	190	4-M10×45	56	10	4-M10×25	15
130	101~130	250	225	6-M12×35	50	10	2-M8×20	9
160	131~160	280	255	6-M12×35	50	10	2-M8×20	11
190	161~190	310	285	6-M12×40	52	10	2-M10×25	12
220	191~220	358	324	6-M12×40	52	10	2-M10×25	16
260	221~260	404	370	6-M12×40	55	10	2-M10×25	19
300	261~300	444	410	6-M12×40	55	10	2-M10×25	20