

# Jinbo Marine

Marine &amp; Offshore Equipment Datasheet

PRODUCT DATASHEET

## HIGH PRESSURE PUMP

## HPU-350 Air Driven High Pressure Hydraulic Pump

Description: HPU-350 Air Driven High Pressure Hydraulic Pump is a new type of hydraulic stretching and pressing equipment. It transforms the lower air pressure into pressure oil and becomes an ideal power source. ...

ISO9001 Supplier

Class Certificate

Export Supply



### Key Highlights

Category	High Pressure Pump
Standard	DIN
Weight / Size	It can be widely used in large and medium-sized mechanical screw fasteni...
Certificate	ABS, LR, BV, DNVGL, NK, KR, IRS, RMRS, CCS

We can supply according to your requirement, drawings, class certificate needs, and delivery schedule.

### Technical Specifications

Category	High Pressure Pump	Model / SKU	HPU-350-Air-Driven-High-Pressure-Hydraulic-Pump
Standard	DIN	Weight / Size	It can be widely used in large and medium-sized mechanical screw fastening, large transmission parts and keyless matching of structural parts in metallurgical mining, petrochemical industry, shipbuilding industry, locomotive and vehicle manufacturing industry.
Certificate	ABS, LR, BV, DNVGL, NK, KR, IRS, RMRS, CCS	Warranty	12 Months unless specified otherwise
Origin	China		

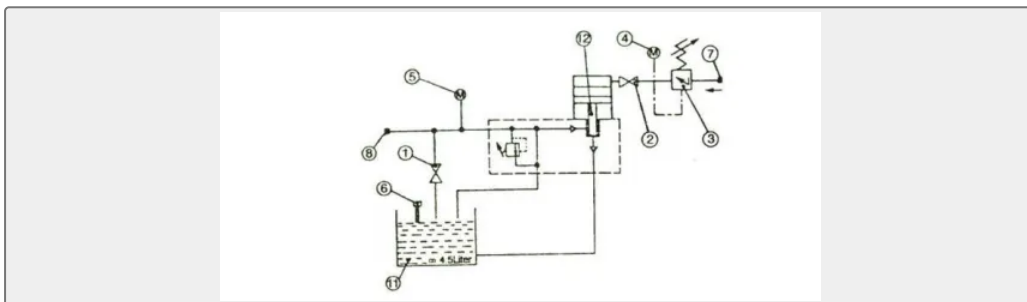
**CONTENTS**

- Description:
- System:
- Technical data:

**Description:**

HPU-350 Air Driven High Pressure Hydraulic Pump is a new type of hydraulic stretching and pressing equipment. It transforms the lower air pressure into pressure oil and becomes an ideal power source.

FYB series hydraulic booster pump has the advantages of high output pressure, simple operation, safe and reliable, easy to carry and so on. It can be widely used in large and medium-sized mechanical screw fastening, large transmission parts and keyless matching of structural parts in metallurgical mining, petrochemical industry, shipbuilding industry, locomotive and vehicle manufacturing industry. It is an ideal tool for assembling and matching various large and medium-sized machines.

**System:****Technical data:**

Model	HPU-350
Weight	32 KG (net weight)
Size	490*430*480 mm
Output oil pressure	Maximum 350MPa (input pressure 0.7MPa)
Output oil pressure	Maximum 300MPa (input pressure 0.6MPa)
Pump working speed	About 4000 cycles per minute, input pressure 0.7MPa

Tank capacity	About 8L
Maxi flow (At no pressure)	About 0.35m <sup>3</sup> per minute, input pressure 0.7MPa