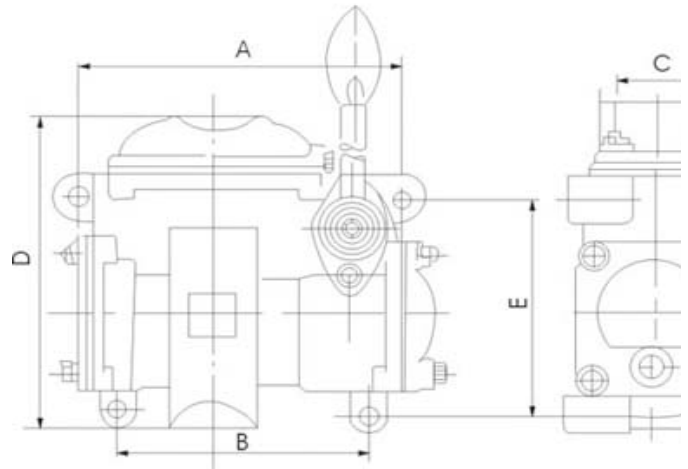


HAND PISTON PUMP



Main Specification

Hand piston pump is suitable for various shipping pumping excluding hard particle or fiber of freshwater and seawater, and lubricant, oil, and other lubrication oils. This pump can be used in human engineering, fire, well water, kitchen sewage oil-water, transport department and so on the different places. Temperature of medium transported not to exceed 60°C.

Name	Unit	Type			
		CS-20Y/H S(SH)-20	CS-25Y/H S(SH)-25	CS-32Y/H S(SH)-32	CS-40Y/H S(SH)-40
Capacity	L/min	20	32	48	65
Delivery head	MPa	0.25-0.3	0.25-0.3	0.25-0.3	0.25-0.3
Suction vacuum height	MPa	0.06	0.06	0.06	0.06
Cylinder diameter	mm	65	75	88	95
Piston stroke	mm	68	80	90	96
Reciprocating times	Times/min	50	50	50	50
Weight	kg	5.8	7.5	10.5	12

Type Code:

CS: Marine Hand Pump

20: Suction Diameter

Y/H: Cylinder liner material for iron and copper alloy.

Y: Suitable for pumping oil or water.

H: Suitable for fresh water and seawater.