

JIS F2005-1975 Deck Mounted Marine mooring Closed Chock



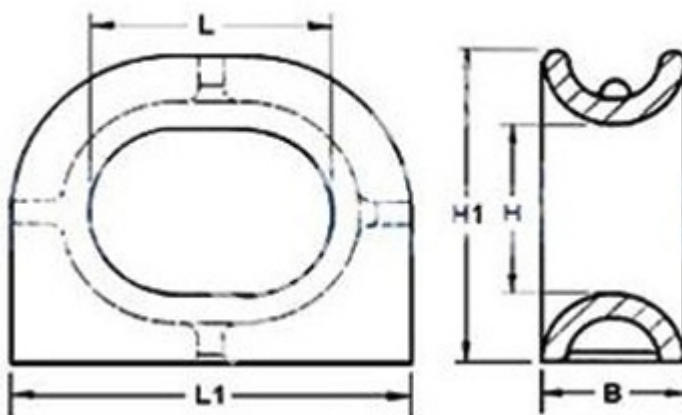
Closed Chock are used for small boats,ships,tug,cargo vessel,tankers etc. It usually equipped on stern and ship sides.

Material:Cast steel.

Function:

1. It can guide the rope from the inboard to the outboard at certain direction, change the trend of rope and limit its place.
2. It can reduce the abrasion between rope with gunwale, avoid increasing the stress due to a sharp bend.

Drawing:



Size chart:

JIS F2005-1975 Deck Mounted Marine mooring Closed Chock								
Product No.	Dimension(mm)					Mass(kgs)	Dia. Of Rope Applied	
	L	L1	B	H	H1		Wire	Hemp
DMJ-001	100	170	60	76	141	3.7	14	24
DMJ-002	150	250	90	110	205	10.5	16	30
DMJ-003	200	340	120	150	280	24	18	40
DMJ-004	250	434	160	200	372	48	20	50
DMJ-005	300	528	200	250	464	82	22	60
DMJ-006	350	600	220	250	485	103	24	70
DMJ-007	400	672	240	250	506	136	26	80
DMJ-008	450	746	260	250	528	184	30	85
DMJ-009	500	820	280	250	550	232	36	90

Also we can supply other kinds of Chocks as below.

- Deck mounted Panama chock JIS F2017-1982 type AC
- Bulwark mounted Panama Chock JIS F2017-1982 Type BC
- Deck Mounted Closed Chock JIS F2005-1975
- Bulwark mounted mooring chock JIS F 2007-1976 type A
- Bulwark Mounted Chock DIN81915-1998 Type A
- Bulwark Mounted Chock DIN81915-1998 Type B
- Deck mounted Chock DIN81915-1998 type C
- Deck mounted Chock DIN81915-1998 type D
- Deck mounted Chock DIN81915-1998 type E
- Deck Mounted Chock EU Type
- Bulwark Mounted Chock EU Type
- Single Point Mooring Pipe JIS F 2030-1978 type A
- Single Point Mooring Pipe JIS F 2030-1978 type B
- Deck mounted chock type A NS2587
- Deck mounted chock type B NS2587
- Deck mounted chock type A NS2588
- Deck mounted chock type B NS2588
- Deck mounted chock type A NS2589
- Deck mounted chock type B NS2589
- Deck mounted chock type A NS2590
- Deck mounted chock type B NS2590
- Mooring chock CB34 -76 TYPE A
- Mooring chock CB34 -76 TYPE C
- Open chock JISF 2006 TYPE FC