

DIN81915-1998 C type Deck mounted Chock



It is a very popular type marine chock, widely used for vessel, tug, cargo ship, military ship, industrial ships etc. Usually it is installed at bow and stern of tankers for general mooring purposes.

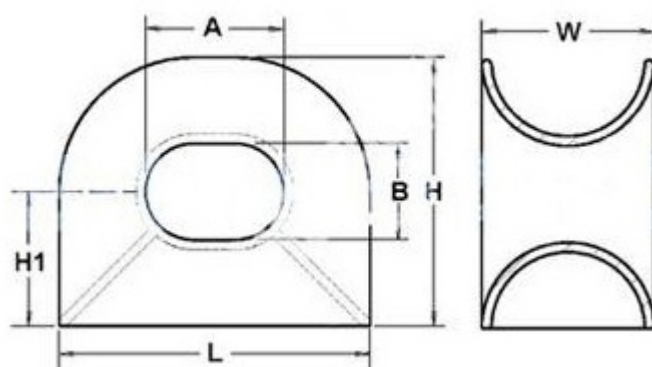
Description:

1. Can issue BV, CCS, DNV, ABS, mill certificate
2. Good after-sale service
3. Installed easily
4. surface been finished smoothly.

Remarks:

- Type C2 - C8 =Single Chock according to panama rules;
Type C12 - C32 =Double Chock according to panama rules.

Drawing:



Size chart:

DIN81915-1998 C type Deck mounted Chock								
Product No.	SWL(KN)	Dimension(mm)						Mass(kgs)
		L	W	H	H1	A	B	
DMC-001	10	285	160	250	125	125	90	19.5
DMC-002	20	360	200	316	158	160	115	29
DMC-003	30	450	250	390	195	200	140	48
DMC-004	50	550	300	480	240	250	180	85
DMC-005	80	680	360	586	293	320	225	136
DMC-006	125	840	440	710	355	400	270	211
DMC-007	200	1020	520	840	420	500	320	256
DMC-008	320	1300	700	1100	550	600	400	840