

## JIS F2026-1980 A type Marine roller fairlead



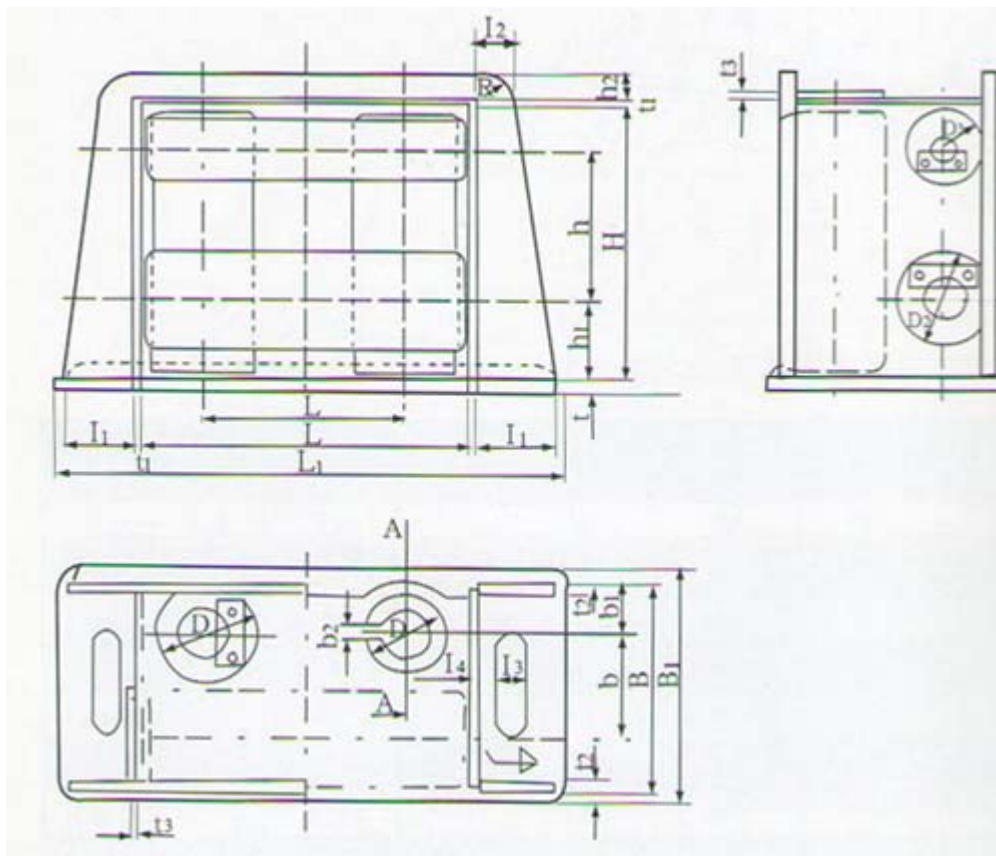
JIS F2026-1980 A type Marine roller fairlead and FA4 series marine fairlead is very popular type.

### **Feature:**

1. Good wear and corrosion resistance.
3. Durable, long lifetime.
3. Provide CCS , BV , LR , BV etc Certificate.
4. Material: ZG230-450, Q235.
5. Surface: Blasting, Epoxy.
6. Customized service is available, Advanced equipment , Strong consciousness in controlling quality.

We can supply roller fairlead, Fairleads with horizontal rollers according to JISF, DIN and GB standards . We can also make these products according to buyer's drawings.

**Drawing:**



**Size chart:**

Nominal dia	Frame																
	B	B1	b	b1	b2	D	D1	D2	H	h	h1	h2	L	L1	L2		
140	310	355	150	69	20	90	140	120	480	275	130	40	515	805	335	120	60
160	360	405	175	82	22	110	160	140	515	290	145	45	570	890	365	135	65
180	410	455	200	95	24	135	180	150	560	315	155	50	620	960	390	145	70
200	460	505	225	108	26	160	200	160	590	330	170	60	675	1049	420	160	80
250	565	610	280	133	30	200	250	200	715	415	195	75	825	1303	520	210	105
315	670	715	330	159	34	240	300	240	870	520	220	90	980	1562	620	260	130