

Manual release harbour type towing hook

Brief description:

Popular model:15 ton, 30 ton, 45 ton, 56 ton,100 ton etc.

Advantages:

Safe handling and releasing with only a minimum manual effort less than 20kg at full SWL.

The head of hook is designed for balance so that restoration of the hook and release part could be completed with a single action.

Spark-proof and insulating design.

Feature:

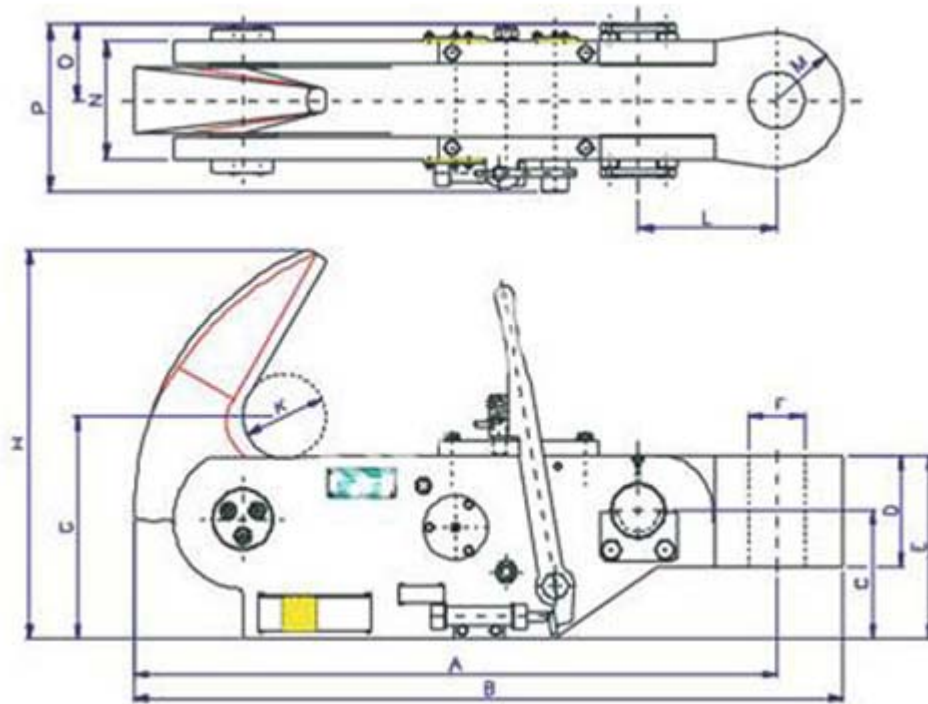
Long lifetime and minimum maintenance.

Towing flexible.Easy to handle.

Work principle:Leverage.

Ensure the hook and hook knife tight junctions before use it, and make the crankshaft in the working state.

Drawing:



Size chart:

Product No.	Safe working load(Kn)	Test load(Kn)	Release load(Kn)	Weight(kg)	A	B	C	D	E	F	G	H	K	L	M	N	N	P
HHB-001	150	300	150	52	521	571	100	100	150	40	174	316	65	110	50	100	100	150
HHB-002	300	600	300	143	788	868	160	130	225	60	268	461	96	180	80	125	125	207
HHB-003	450	900	450	289	1023	1123	200	160	260	80	350	616	130	210	100	148	148	224
HHB-004	562	1125	562	352	1073	1183	200	180	290	90	350	616	130	250	110	170	170	245
HHB-005	1000	1500	1000	526	1159	1279	230	200	330	100	400	700	150	250	120	212	212	333