

Manual release spring towing hook



The **towing hook** enable ships to be towed in safety under all kinds of working conditions,it can be released manually.

Certificate with CCS, BV, ABS , DNV ,GL , mill certificate etc.

Popular model:5 ton,8 ton,10 ton,11 ton,12 ton,16 ton,25 ton,30 ton,40 ton

Type: manual spring Type/Hydraulic spring type.

Operation mode: Side movement

Material:Including Q235-A material,35# steel,35 Crmo, 60Si2Mn.

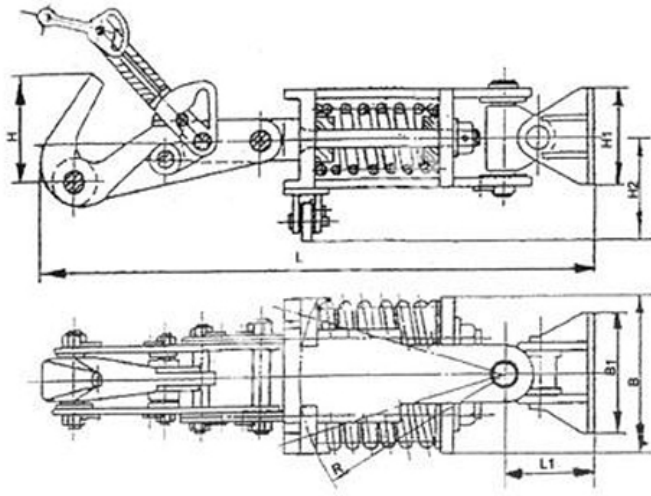
Manual release spring towing hook also be called as Hydraulic r
lease spring towing hook, manual spring towing hook,hand operated towing hook.

Warranty:

We undertake to amend any defectives parts caused by poor design, material or workmanship for the goods supplied.

Warranty period:within a period of 12 months from date of invoice.

Drawing:



Size chart:

Product No.	Max.load(KN)	L(mm)	L1(mm)	B(mm)	B1(mm)	H(mm)	H1(mm)	H2(mm)	R(mm)	Weight (KG)
MSH-001	16	822	145	232	150	180	150	157	309	56.6
MSH-002	25	916	142	260	130	190	130	141	345	83.7
MSH-003	40	1180	184	330	208	270	228	189.5	445	177.9
MSH-004	63	1411	196	342	200	284	160	192	563	267.9
MSH-005	100	1710	253	410	260	376	250	256.5	684	558.1
MSH-006	160	1936	270	458	320	400	210	261	741	646.9
MSH-007	220	2448	324	560	310	490	300	310	952	1269.1
MSH-008	320	2128	315	590	342	430	280	332	828	1058.8
MSH-009	400	2259	330	640	320	472	300	355	880	1340.1