

Pneumatic control spring towing hook



It is use for towing with steel,nylon or polypropylene ropes. it can be released manually or from the wheel house by pulling the release wire or by pushing a button. Remote control systems can be supplied with either a hydraulic or pneumatic release mechanism.

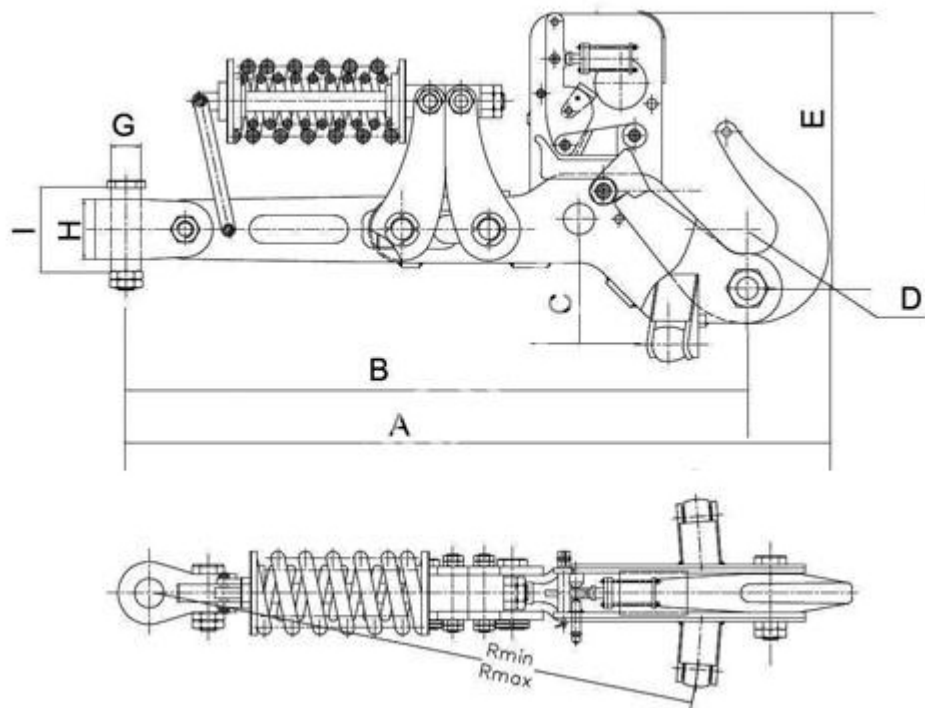
Popular model:5 ton,8 ton,10 ton,11 ton,12 ton,16 ton,25 ton,30 ton,40 ton

Type:Pneumatic control spring Type,air control spring type.

Operation mode: Side movement

Material:Including Q235-A material,35# steel,35 Crmo, 60Si2Mn.

Drawing:



Size chart:

Product No.	Max Towing power(ton)	Main Size(mm)					Weight (KG)	Connection Size(mm)			Action Radius(mm)		Cylinder Air Pressure
		A	B	C	D	E		G	H	I	Max R	Min R	
PSH-001	20	1830	1630	340	R50	614	342	70	150	210	1475	1400	6--8
PSH-002	30	2015	1780	384	R70	805	595	85	170	240	1805	1690	
PSH-003	40	1935	1655	404	R75	830	697	90	190	260	1590	1490	
PSH-004	60	2270	1906	485	R90	940	1234	110	240	340	1845	1740	